



WINTER FAMILY ADVENTURE CAMP



Philmont Scout Ranch
Cimarron, New Mexico

Table of Contents

Welcome	2
About Philmont	2
Conference and Program Support Team	4
Before You arrive	5
Your Trip to Philmont	6
Meals and Housing	8
The PTC Experience	9
What To Bring	9
Health and Safety	10
At Your Service	11
Things to Know	11
Spare Time	13
Philmont Country	14
Philmont Maps	16
Philmont Hymn, Grace and Brands	17





Dear Guest,

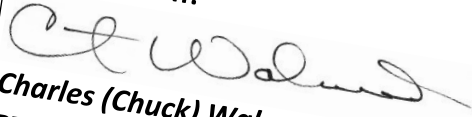
Welcome to the Philmont Training Center host of the Winter Family Adventure Camp.

We are thrilled to have you and your family join us in an exciting adventure led by our exceptional Philmont staff. Your family will enjoy a variety of activities and programs that will help create lasting bonds and discover new experiences together.

In this guidebook, we've tried to cover details and answer questions that may arise before arriving at the ranch. There have been changes from previous years, so 'be prepared' by carefully reading this guidebook and sharing it with your family. If you have any questions or concerns, feel free to give us a call or send us an email.

Our customer service team is working hard to plan an exciting and fun-filled week for you and your family. The beauty, history, and unique charm of New Mexico and Philmont awaits you.

See you soon!


Charles (Chuck) Walneck
PTC Task Force Chair


Danny Tucker
PTC Director

About Philmont

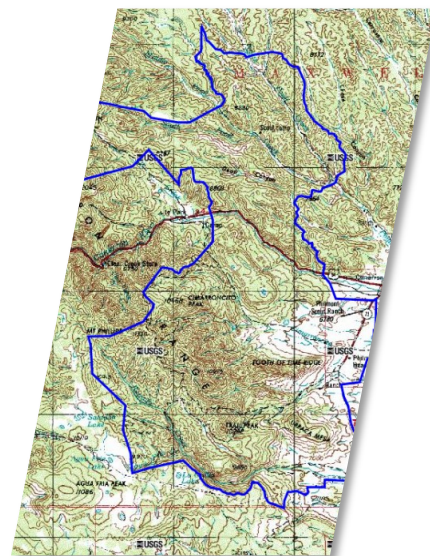
Philmont Scout Ranch spans across 140,171 acres of northeastern New Mexico. Most of that land is part of two gifts from Oklahoma oilman, Waite Phillips, who donated it "for the purpose of perpetuating faith, self-reliance, integrity, and freedom—principles used to build this great country by the American Pioneer."

Philmont's mountain terrain ranges in elevation from 6,621 feet at headquarters to 12,441 feet atop Baldy Mountain. Our abundant wildlife population includes deer, elk, mountain lion, bear, bobcat, buffalo (American bison), and antelope.

Since Waite Phillips's first property gift in 1938, over 1,000,000 Scouts and their leaders have participated in the challenge of the backpacking program offered at Philmont Scout Ranch. Staffed camps offer a variety of activities including horseback riding, burro packing, mountain biking, gold panning, rock climbing, forestry, riflery, archaeology, and much, much more—with an emphasis on environmental awareness.

Mr. Phillips held a deep respect for the American cowboy. As part of the gift, he asked that Philmont always remain a working cattle ranch. Philmont maintains cattle, pack burros, buffalo, and riding horses.

Serving as the **National Training Center** for the **Boy Scouts of America** since 1950, the Philmont Training Center offers a variety of week-long conferences for volunteers and professionals each summer. While a Scout leader is in conference, programs are planned for all members of the family – infant through adult. For the first time in 2018, a family-based adventure experience was hosted by the Philmont Training Center, Philmont Family Adventure Camp.



Family Adventure Camp

BSA Family Adventure Camp at Philmont Scout Ranch focuses on families experiencing new and exciting Philmont adventures as a family unit. Family Adventure Camp is designed to build bonds and create memories through exciting and interactive programs. Prior to your visit you will be contacted by Philmont Training Center Staff to organize what activities you will partake in during your stay with us. Activities are seasonal and weather dependent so options change weekly and even daily.

Philmont Staff

Philmont has a much smaller staff in its shoulder seasons. The Training Center has 2-4 seasonal staff during the winter season. Philmont employs a permanent staff of 86 employees that work all year round to keep the ranch running and getting ready for our large influx of staff and participants for the summer season. In the summer Philmont employs over 1,100 seasonal staff to operate our large property and deliver programs at full capacity.

BSA Family Adventure Camp is open to all families, not just those registered with the Boy Scouts of America.

For all Philmont Family Adventure Camp activities, minors (under 18 years old) must be accompanied by at least one adult family member 18 years or older. We strongly recommend you make group decisions as a family with the goal of participating together.

Philmont Training Center Customer Service Team

Assistant Director, Program: Maddy Houk

Registrar: Amanda Martinez

Director: Danny Tucker



PTC Customer Service Office Hours

Winter/Autumn Hours: M-F 9:00am to 5:00pm

Summer Hours: M-SUN 7:30am to 5:30pm

575-376-2281

Philmont.TrainingCenter@scouting.org



Before You Arrive

Registering and Paying Your Fees

Registering for Family Adventure Camp is easy and allows you to customize your experience.

As part of your online registration, you will be able to register your family members, list dietary restrictions, and choose unique Philmont experiences. A non-refundable deposit is required per adult 18+.

Next, you will be directed to a second website to choose your housing option, much like reserving a hotel room. You will be able to choose from a variety of housing options, select your nights of stay, and location of the accommodation. Housing fees are paid in full at time of registration.

After you complete your reservation, you will be sent a range of emails to keep you in the loop on details of your Family Adventure Camp experience.

All fees may be paid with a credit card or ACH payment. Fees must be paid in full 30 days before your arrival.

What is included in the Registration Fee?

When you register your family for BSA Family Adventure Camp, your registration fee is all inclusive including all meals (from the first evening of your stay through breakfast of your departure day), staffing, daily activities and the PTC Experience.

Housing is charged separately. Due to weather, all winter housing is in our roofed housing units. These units are discounted for the winter season.

Cancellation and Refund Policy

60 Days Out from Event = Full Refund minus deposit

45 Days Out from Event = Half Refund minus deposit

30 Days Out = No Refund

Refunds considerations will include all fees paid including housing.

No-shows, or registrants who do not submit a written explanation for cancellations, will not be eligible for a refund.

Exceptions to the rule are as follows:

- Military Service
- Death in the family
- Major medical incidents
- Other extenuating circumstances on a per case basis

All cancellations require an explanation with a request for a refund, prior to the start of the first day of the registered conference.

Please remit your explanation and request to: Philmont.TrainingCenter@scouting.org, Subject Line: PTC Cancellation.

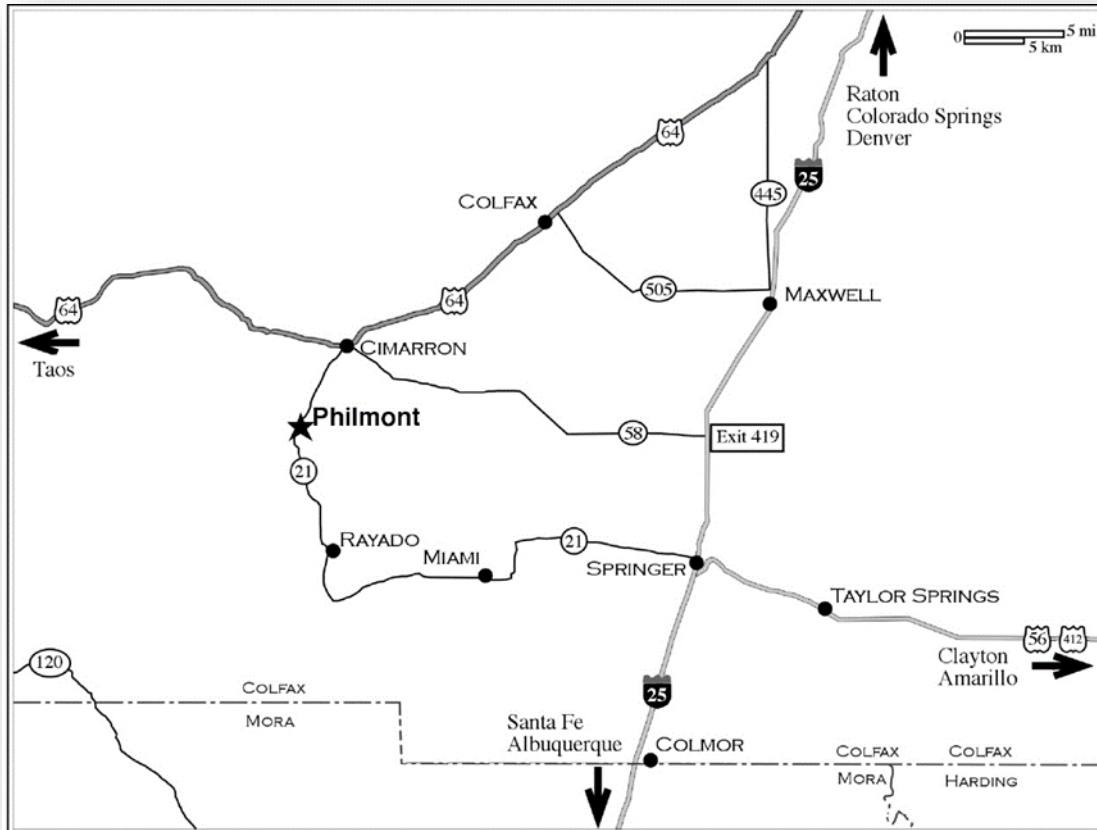
Refunds will be returned via the credit card on file or ACH payment.



Your Trip to Philmont

When to Arrive

Check-in is from **2:00 - 4:00pm** the day of your arrival. Lunch is not served on your arrival day. Your first meal with us is the evening of your arrival. Late arrivals must notify the customer service office to receive check-in instructions.



By Automobile

Driving across country to Philmont is a great experience. Depending on your available time, sightseeing opportunities abound between your home and Philmont and in the area around Cimarron. Refer to the map for highway information.

Please note that New Mexico has a mandatory seatbelt law and speed limits are strictly enforced. The speed limit in Cimarron is 35mph and the Philmont Training Center is 15mph. Please drive carefully. Parking is available near tenting and roofed housing areas; however, these spaces are limited, and you may be asked to park in long-term parking. There is no electricity available for charging electric vehicles.

From Denver or Colorado Springs:

Go south on Interstate 25 to Raton, New Mexico (17 miles south of the Colorado border). Four miles south of Raton take Exit 446 onto Highway 64 and drive about 40 miles to Cimarron.

From Albuquerque:

Go north on Interstate 25 about 200 miles to Springer, New Mexico. Three miles north of Springer, take Exit 419 onto Highway 58 and drive about 20 miles to Cimarron.

From Taos:

Stay on Highway 64 toward Angel Fire (east of Taos). You travel through Taos Canyon, Eagle Nest, and Cimarron Canyon, to reach Cimarron.

From Cimarron:

Turn south on State Highway 21 and drive approximately 4 miles to Philmont Scout Ranch. As you enter Philmont, you will see several buildings before you reach your destination; these buildings are other parts of Philmont Base Camp, such as the Administration Building.

Look for the brown Philmont Training Center sign near mile-marker 4 and turn left (east) onto Orchard Circle. The Villa Philmonte, the Mediterranean-style home of the Phillips family, is located on the grounds of the Philmont Training Center and will serve as a guide to those arriving by car.

By Plane

The nearest major air terminals are Colorado Springs (190 miles north) and Albuquerque (220 miles south). Other terminals are: Denver (270 miles north), and Amarillo (220 miles east). Raton has a municipal airport for private aircraft. Philmont does not offer any shuttles during the autumn and winter seasons from airports excluding the Raton municipal airport for private aircrafts.

By Bus

Currently, there are scheduled buses each day during the summer from Denver, Colorado Springs, Albuquerque, and Raton. The Raton bus stop is across the street from the Amtrak station. Contact Greyhound at 575-445-9071 or 800-231-2222 or visit www.greyhound.com for more information.

By Train

AMTRAK is scheduled to arrive in Raton twice daily. The late morning train arrives from the east and the late afternoon train arrives from the west. Contact AMTRAK at 800-872-7245 or visit <http://www.amtrak.com>.

Recreation Vehicles

Parking may be available at the Philmont Training Center for RV's, campers, and trailers, but hookups are not available, and no cooking is allowed within RV's that are in the parking area. Participants with RV's will be assigned tents and are expected to reside in these tents throughout the week. There are two RV campgrounds in Cimarron if you wish to stay in your RV.

Shuttle Service

From Raton Train Station

Shuttle reservations must be coordinated with the Philmont using the Shuttle Application. These shuttles do not run every day, so please be sure to check the backside of the Shuttle Sheet for available dates. The shuttle information is available [here](#).



About Cimarron Village

Cimarron is a small village with a population of about 900. There are a few small hotels and restaurants. There is also a Family Dollar and two gas stations in town. For more information about Cimarron accommodations, contact the Chamber of Commerce at 575-376-2417 or 888-376-2417 or visit their website at www.cimarronnm.com.

Meals and Housing

Food Service

Meals are served cafeteria style in our dining hall. Guests will line up outside the Dining Hall Veranda, wash their hands, and then enter. Early-arrivals will be led by the staff in reciting the Philmont Grace. Menus vary, but there is always a salad/fruit bar, cereal with milk, and peanut butter and jelly for sandwiches. Lunch and dinner may also have a soup and hot bar with additional food selections.

Guest are welcome to use the East Tent City refrigerator to store infant formula, medications, and specialty food items..

As part of the registration process, you should have indicated If you or a member of your family has special dietary requirements. If you missed this, please let Philmont know in advance by emailing Philmont.TrainingCenter@scouting.org. Philmont's isolated location limits the availability of many specialized food items and these items may need to be brought from home. **Philmont's food service staff will make every effort to meet your needs but may not be able to accommodate persons following strict diets for religious or medical reasons. Philmont does not serve Vegan.**

Housing

In the winter the housing available are lodge rooms and bungalows

Lodge Rooms

Our Lodge Roofed Housing option is similar to a hotel room that contains one room with beds, futon, microwave, and refrigerator. There is an attached private bathroom containing a toilet, sink, and shower.

Philmont will provide bedding and towels during your stay in the Lodge Rooms. Room cleaning services will not be provided during the duration of your stay.

Lodge Room— Style 1: Can sleep 2-3 people with two twin beds and a futon.

Lodge Room— Style 2: Can sleep 4-5 people with two sets of bunk beds and a futon.

Villa Bungalows

Our Villa Bungalow Roofed Housing option contains two rooms— one bedroom containing all beds, and one living room with a microwave, refrigerator, and couch. There is an attached private bathroom containing a toilet, sink, and shower.

Philmont will provide bedding and towels during your stay in the Villa Bungalows. Room cleaning services will not be provided during the duration of your stay.

Villa Bungalow— Style 1: Can sleep 3 people with a set of bunk beds & 1 twin bed.

Villa Bungalow— Style 2: Can sleep 6-7 people with a ser of bunk beds. 4 Twin beds, and a pull-out couch.



The PTC Experience

In addition to the daily program schedules, your PTC Experience can include a variety of additional fun activities:

Evening Programs

Every evening there are activities for guests and families to enjoy. Events range from family craft nights, cobbler games nights, smores making, and outdoor cooking activities. Don't forget to dress warm. Not all of our locations have heating



Junior Ranger

For ages 5-14, this program will keep children active between programs during your stay. Pick up activity booklets on the information wall in the PTC customer service office.

Program Booklets

Located in the PTC customer service office is a wall of informative booklets to help expand your PTC Experience. Booklets range from local sightseeing locations, descriptions of base camp birds, and astronomy. Pick a booklet or two and make your week extra extraordinary.

What To Bring

Living at Philmont for a week is an exciting outdoor adventure for the whole family! In choosing clothing and equipment, please keep in mind Philmont's elevation (6,600 ft.). Traditional winter weather consists of cool to cold days (high 40's to high 50's), cold nights (20's to low 30's), and occasional snowfall.

The following is a basic list for **each** member of your family:

- | | |
|---|--|
| <input type="checkbox"/> Shower shoes, Toiletries | <input type="checkbox"/> Sunscreen* |
| <input type="checkbox"/> Warm sleeping garments | <input type="checkbox"/> Chapstick* |
| <input type="checkbox"/> Active clothing for free time, trips to town | <input type="checkbox"/> Flashlight* |
| <input type="checkbox"/> Walking/hiking shoes or boots*
(shoes must be broken in) | <input type="checkbox"/> Clothing for cold Temps
(Lots of layers) |
| <input type="checkbox"/> Heavy wool socks* – <i>for hiking or winter activities</i> | <input type="checkbox"/> Extra batteries* |
| <input type="checkbox"/> Sweater/Jacket* | <input type="checkbox"/> Daypack*/School Backpack |
| <input type="checkbox"/> Hat or cap* | <input type="checkbox"/> Medical Forms |
| <input type="checkbox"/> Rain jacket/pants or poncho* | <input type="checkbox"/> Phone Charging Cable/Block |
| <input type="checkbox"/> Long pants and layers | <input type="checkbox"/> A warm coat |
| <input type="checkbox"/> Camera* | |
| <input type="checkbox"/> A waterproof outer shell (Rain gear will work as a waterproof layer)* | |
| <input type="checkbox"/> Two or three 1-liter water bottles*, 3-Liter water bladder*, or canteen* | |

***These items can be purchased at the Tooth of Time Traders.**

Here are some helpful tips:

- If you have an infant or toddler, consider packing a portable stroller. Walking distances can be a problem for small children.
- Long pants and closed toe shoes are needed for activities such as horse rides
- PTC has Osprey Pocos to carry around your small children under 50lbs.

Health and Safety

Medical Care and Emergency Procedures

Philmont has a comprehensive infirmary to support the nearly 30,000 participants who visit each summer. This staff is ready to help you and your family with any medical needs that may arise. Should you or your family need assistance, contact Nate Lay at 575-447-3637. . In addition, all Philmont staff go through extensive training and are equipped to assist in any emergency.

Keep in mind that PTC is at 6,600 feet elevation. Individuals coming from lower altitudes may experience some discomfort at first. Humidity is low, so visitors should drink plenty of water to avoid dehydration (10-14 glasses a day). Persons who are overweight, out of shape, or who have health concerns should consult a physician before coming to Philmont. While the conferences and family programs are not strenuous, some walking and physical activity is necessary.

**In the Case of an
Emergency**

**Please alert the
nearest Philmont
staff member, PTC
Medical Officer,
the Philmont
Infirmary, or dial
911.**

Accessibility

The Training Center dining halls and classrooms are wheelchair accessible. Guests may choose wheelchair-accessible tent platforms as part of the housing registration. Due to limited resources, you must provide your own wheelchair. Unfortunately, wheelchair transportation is not available. Other than motorized wheelchairs, other motorized carts are prohibited. PTC has accessible potty chairs and shower chairs available for check-out.

Health Forms

To provide a safe experience at Philmont Scout Ranch, all participants are required to fill out and bring a completed BSA Annual Health and Medical Record with an attached photocopy of your insurance card:

Parts A and B are required for guests in PTC Conferences and all family programs.

The BSA Annual Health & Medical Record is available on the Philmont Scout Ranch website.

Please do not email or mail your health forms in advance of your arrival.

As part of the check-in process, all forms will be reviewed by the on-duty Health Officer and will be kept on file at the Philmont Training Center Medical Office until the end of the week, when they will be returned.

**Bring any
necessary
medication (such
as asthma
inhalers, Epi
Pens, or other
needs) as these
items may not be
locally available.**

Philmont Weight Limits for Backcountry Participation

Each backcountry participant at Philmont must not exceed the maximum acceptable limit in the weight-for-height chart shown on the BSA Annual Health and Medical Record. Those who fall within the limits are more likely to have an

**Under no circumstance will
any individual over 295 lbs.
be allowed to participate in
backcountry programs,
regardless of height or age.**

**This limit is necessary due to
limitations of rescue
equipment and for the safety
of Philmont personnel. The
maximum weight for any
participant going on a horse
ride is 200 pounds.**

enjoyable experience and avoid incurring health risks. The Philmont staff will use their best professional judgment in determining participation in a Philmont backcountry experience for individuals who exceed the maximum acceptable weight for height. Any exception to the weight limit requires approval from Philmont in advance.

At Your Service

East Tent City Hospitality Center (ETC)

The hospitality center provides a guest a place to relax, play games, and gather for fellowship and fun. This is where we have many evening programs. There is a refrigerator to store guest medications, infant formulas, or special food items.

Laundry

A large coin-operated laundry with washers and dryers is located next to Small Fry and is open 24 hours. Laundry detergent and dryer sheets are available in the laundromat in a dispensing machine, along with a change machine. Additional laundry items are available at the Tooth of Time Traders. The PTC office can also make change..

Sunroom and Business Center

Attached to the PTC customer service office and available 24/7 is the Sunroom and an extra office to help guests catch up on work. The Sunroom includes wifi, a library, Dish TV, and overlooks the Greensward fountain. A spare office is dedicated to faculty and guests with access to a computer, phone and printer. There is a nominal fee for copies.

The Tooth of Time Traders (ToTT)

Scouting materials, personal items, gifts, and Philmont souvenirs are available for purchase at the Tooth of Time Traders, located at Camping Headquarters. The store is also an excellent resource for any of your hiking or outdoor needs.



Things to Know

Branding

A hallmark of the ranch is the ability to place Philmont brands on personal items such as hats, boots, water bottles, leather belts, etc. PTC staff will be available to brand and evening program.

Buffalo and other Wildlife

Philmont's buffalo pasture is located west of Highway 21 as you drive north toward Cimarron. The herd is maintained in three pastures and you may see them if you drive two miles west of the Administration complex. Photos are welcome, but please **do not** cross fences and pull fully off the road when stopping. Buffalo are wild animals and unpredictable.

Philmont is inhabited by a wide variety of wild animals, including deer, turkey, skunks, raccoons, and black bears. During your stay at the Training Center, there are many opportunities to see wildlife; however, please keep your distance and respect their habitat. In addition, please refrain from leaving scented items (food, toiletries, etc.) out in the open.

Firearms, Alcoholic Beverages, and Smoking

Philmont does not permit the possession of personal firearms while on the property. Possession or consumption of alcoholic beverages is also not permitted on Philmont property. As a facility of the Boy Scouts of America, all buildings and tents at Philmont are smoke-free. Designated smoking areas are the Curtis Pavilion and your own vehicle.

Internet Access and Telephone Service

Philmont has a free wireless internet network called Adventure. Due to the large number of users, the speeds may not be what you are used to at home. All conference buildings have Wi-Fi coverage. Cell coverage is limited. AT&T service is strongest. Other carriers may have weaker signals.

Mail

Outgoing mail is picked up around 10:00am from the mailbox outside the PTC office, Monday through Saturday. Incoming mail is delivered to your family via Philmont Staff. Postcards can be purchased at the Tooth of Time Traders and stamps are for sale at the PTC Office. Parcels should be shipped via U.S. Mail, Federal Express, or UPS. Other services do not deliver to Philmont. **Do not rely on "next day" service, please make sure to allow at least one week for deliveries.**

While at Philmont, your mailing address is:
Your Name
Conference/ Program and Date of Week Attending
Philmont Training Center
17 Deer Run Road
Cimarron, NM 87714

Things to Know

Lost and Found

All lost items that are found are turned into the PTC office or the Dining hall. If you are missing something please let us know what you are missing so we can keep a look out for it.

Nametags

All guests are to wear their nametags at all times. Nametags provide access to the dining hall and is proof you have gone through security and medical recheck.

Pets

Pets, other than those required for assistance (such as seeing-eye dogs), are not allowed at Philmont. The Raton Animal Hospital (575-445-2691) can board pets at a standard daily rate. You must place your pet in a boarding kennel before your arrival at the Training Center.

Philmont Photos

A Philmont staffer will take family photos on the Villa Lawn. Please check the weekly schedule for photo times.

All photos will be made available for download after your experience has concluded. You will receive a QR code for a free download in your departure packet.

Philmont Recognition

Guests will receive a collectible Family Adventure Camp patch for their attendance. .

Other unique Philmont patches can be purchased at the Tooth of Time Traders, and PTC office.

Uniforms

Philmont is the National Training Center of the Boy Scouts of America. Family Adventures Camp participants are not required to wear uniforms, but are welcome to.

Water Bottle Filling Stations

Filling stations are located around the property in addition to restrooms. Please use a cup to fill bottles at the dining hall beverage dispensers. Also, a water filling station is located in Dining Hall next to the main restrooms.



Spare Time

While your conference schedule is busy, you'll have a fair amount of free time to explore Philmont and there are many exciting activities and places to see. In addition to visiting the Villa and the other museums, a visit to Camping Headquarters allows a glimpse into Philmont's trekking operation.

Jogging Trails

Enjoy base camp with a morning run. For the safety of runners and vehicle traffic, please wear a safety vest, do not run on roads, or block all noise. There are jogging trails along Highway 21 from cattle headquarters to Cimarron.

Hiking

Hikers need to bring appropriate water bottles, daypack, rain gear, and a warm jacket or sweater. Sunglasses, sunscreen, a hat, and a first aid kit are also recommended. Only those who meet Philmont's height and weight requirements, have Philmont staff guide, are approved by the PTC Medical officer, and are in good physical condition should attempt to hike Philmont's trails.

Tooth of Time Traders

Scouting materials, personal items, gifts, and Philmont souvenirs are available for purchase at the Tooth of Time Traders, located at Camping Headquarters. The store is also an excellent resource for any of your hiking or outdoor needs.

Philmont Museums

National Scouting Museum

Newly opened in 2018, experience the National Scouting Museum! This on your own activity is a great opportunity to learn about the 100-plus-year history of the Scouting movement with collections of some of Scouting's greatest treasures. This collection not only documents Scouting's unique influence on American culture, but also tells the story of a movement that has positively affected the lives of more than 110 million young people.

Villa Philmonte Tour

Philmont benefactor Waite Phillips' summer home, the Villa Philmonte, is open each day for tours. PTC has specific tours pre-assigned. If you want to schedule a different tour please come to the PTC customer service desk to request one.

For health and safety reasons, Philmont does not allow hikes in any backcountry areas other than the hikes available as referenced by the schedule. This includes the Tooth of Time. Please observe this policy during your stay at the ranch.



Philmont Country

Philmont Scout Ranch spans 140,171 acres of mountainous territory in the Sangre de Cristo (Blood of Christ) mountain range—a section of the Rocky Mountains located in northeast New Mexico. Elevations at Philmont range from 6,500' to 12,441' and the land varies from heavily forested mountains to semi-arid plains.

Philmont History



Carlos Beaubien

Once inhabited by Jicarilla Apache and Mouache Ute Indians, Philmont was the site of one of the first pioneer settlements in northeastern New Mexico. The present ranch is part of the original Beaubien and Miranda Land Grant, which was granted to Carlos Beaubien and Guadalupe Miranda by the Mexican government in 1841. Beaubien's son-in-law, mountain man Lucien Maxwell, led the first settlers to the grant in 1848. With help of his friend, Kit Carson, Maxwell's settlement on the Rayado River prospered, despite frequent Indian raids and harsh wilderness conditions.

Maxwell moved his ranch north to the Cimarron River in 1857, the site of the present-day Cimarron. It became a famous stop on the Santa Fe Trail, bringing American trade goods into New Mexico. Ten years after Maxwell moved to the Cimarron, gold was discovered on his ranch near Baldy Mountain. For years afterward, the mountains and streams of Maxwell's Ranch swarmed with prospectors and miners.

In 1870, Maxwell sold his ranch to an English land company known as the Maxwell Land Grant and Railroad Company. After several years, the land was again sold to a Dutch-based company who attempted several development schemes, but eventually sold the land in tracts for farms and ranches.

Oklahoma oilman Waite Phillips became interested in developing a ranch out of the old land grant in 1922. He eventually amassed over 300,000 acres of mountains and plains in a ranch he named Philmont (derived from his name and the Spanish word for mountain, "monte").

The Philmont Ranch became a showcase. Immense herds of Hereford cows and Corriedale sheep grazed its pastures. Phillips built a large Spanish Mediterranean summer home for his family at the Headquarters, naming it the Villa Philmonte. He developed horse and hiking trails throughout the scenic backcountry along with elaborate fishing and hunting cabins for his family and friends.

Waite Phillips believed in sharing his wealth with people outside of his family. In this spirit, he offered 35,857 acres of his ranch to the Boy Scouts of America in 1938 to serve as a National wilderness camping area. The reservation was named Philturn Rocky Mountain Scout Camp (after Phillips's name and the BSA slogan, Do a Good Turn Daily). After observing the enthusiastic response of the first Philturn Campers, Phillips augmented his original gift in 1941 with an addition including his best camping land, the Villa Philmonte, and the Headquarters farming and ranching operation. The second gift was made so that many, rather than few, could enjoy his rich and beautiful land. The property, now totaling 127,395 acres, was renamed Philmont Scout Ranch.

Phillips realized that the cost for maintenance and development of the property could not and should not be derived entirely from camper fees. As an endowment he included in the gift his 23-story Philtower Building in Tulsa, Oklahoma.

In 1963, through the generosity of Norton Clapp, vice president of the National Council of the Boy Scouts of America, another piece of the Maxwell Land Grant was purchased and added to Philmont. This was the Baldy Mountain mining area consisting of 10,098 acres. The gift of Baldy Mountain brought the total acreage to 137,493.

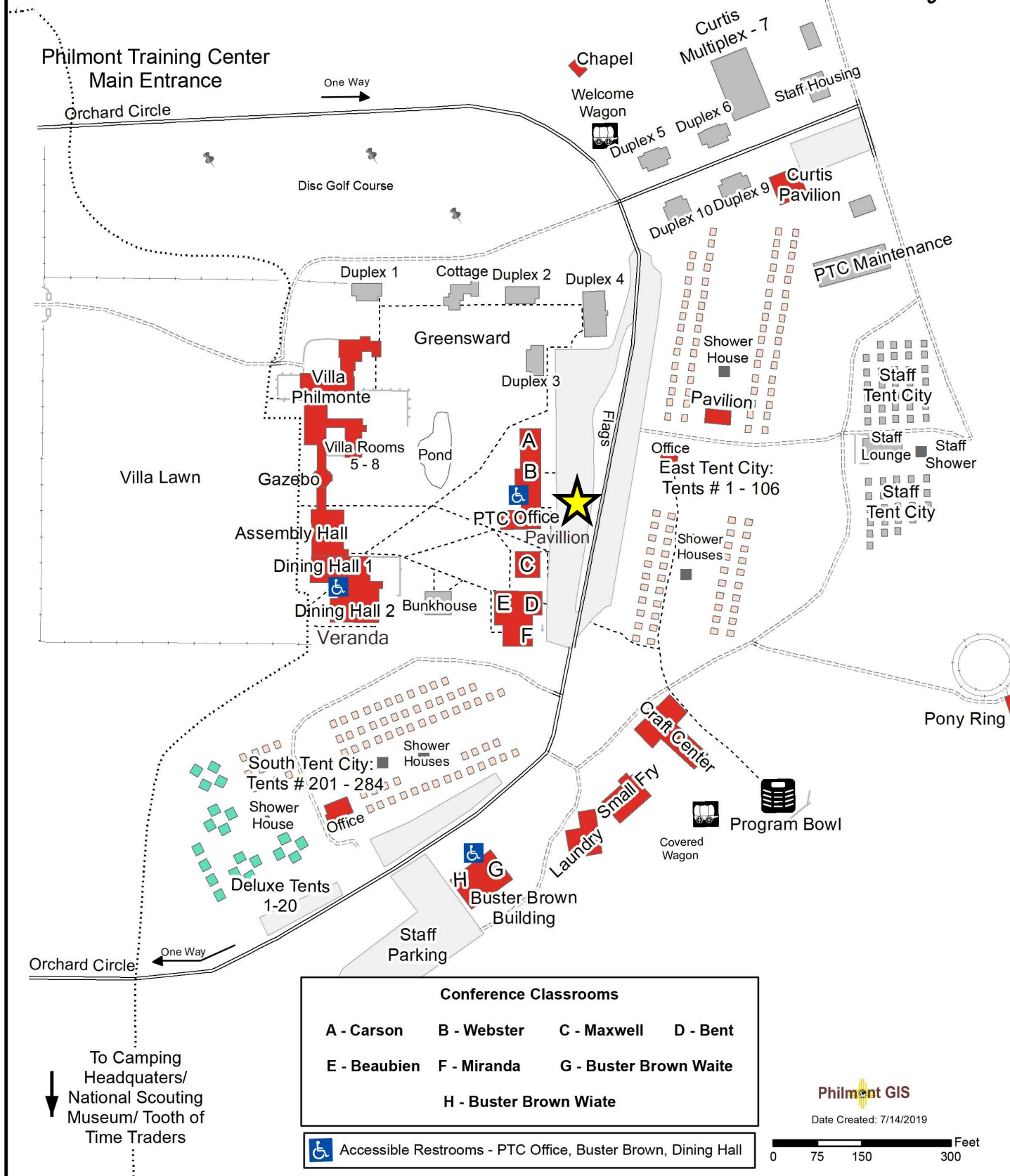
In 2015, The National Council of the Boy Scouts of America acquired the 2,678-acre Cimarroncita Ranch which is located adjacent to Philmont near Ute Park. The property will serve both campers and the Philmont Training Center in the future. Philmont is the largest youth camp in the world now totaling 140,171 acres or approximately 220 square miles.



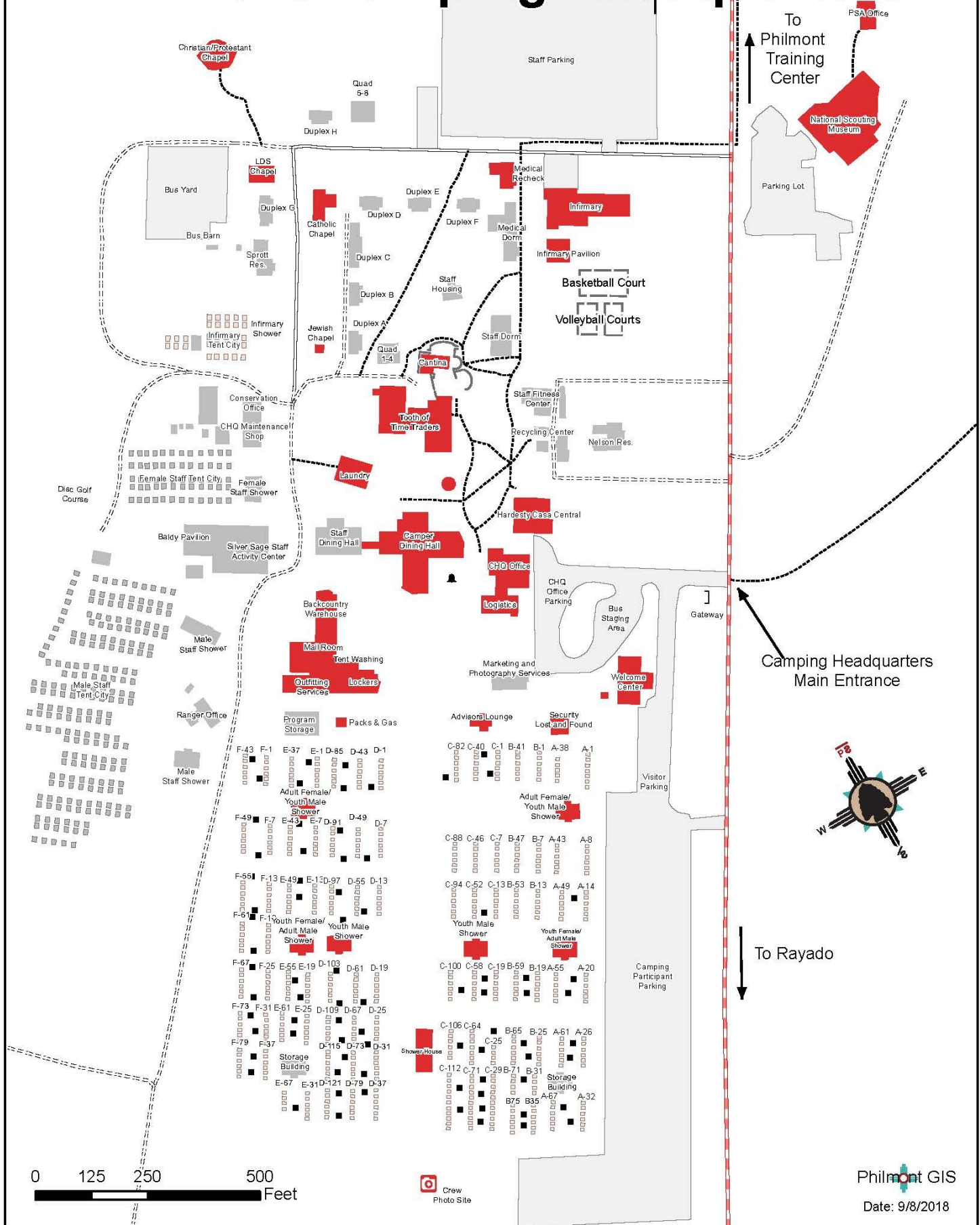
Waite Phillips

↑ To Cimarron/
Shooting Sports
Complex/ Nature
Trail Loop

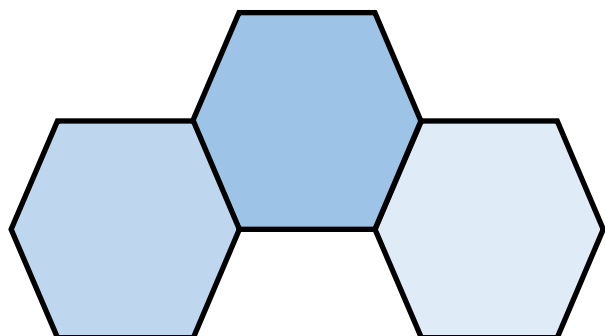
Philmont Training Center



Philmont Camping Headquarters



The Philmont Hymn

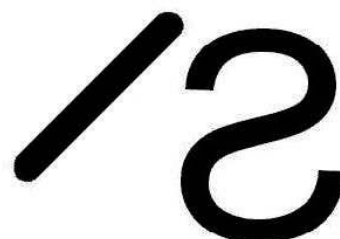


Philmont Grace

For Food, For Raiment;
 For Life, For Opportunity;
 For Friendship
 And Fellowship,
 We Thank Thee
 O Lord.



Philmont Bar PS Cattle Brand



Philmont Slash S Horse Brand



Philmont Scout Ranch and Training Center

17 Deer Run Road

Cimarron, New Mexico 87714

575-376-2281

Philmont.TrainingCenter@scouting.org