



Silverado's Guidebook

Includes Kids N' Kin Info

Conference Family Programs



Supplement to PTC Orientation Guide

Dear Guest,

Welcome to the Philmont Training Center (PTC), where family fun meets the New Mexico Frontier!

We are thrilled to have you and your family join us in an exciting adventure led by our exceptional Philmont staff. You and your family will enjoy a variety of activities and programs that will help create family memories that will last a lifetime.

In this guidebook, we've tried to cover details and answer questions that may arise before you arrive at the ranch. There have been changes from previous years, so "be prepared" by carefully reading this guidebook and sharing with your family. If you have any questions or concerns, feel free to give us a call or send us an email.

Our customer service team is working hard to plan an exciting and fun-filled week for you and your family. The beauty, history, and unique charm of New Mexico and Philmont awaits you.

See you soon!

Charles (Chuck) Walneck
PTC Task Force



Danny Tucker
PTC Director

About Philmont

Philmont Scout Ranch spans across 140,171 acres of northeastern New Mexico. Most of that land is part of two gifts from Oklahoma oilman, Waite Phillips, who donated it "for the purpose of perpetuating faith, self-reliance, integrity, and freedom—principles used to build this great country by the American Pioneer."

Philmont's mountain terrain ranges in elevation from 6,621 feet at headquarters to 12,441 feet atop Baldy Mountain. Our abundant wildlife population includes deer, elk, mountain lion, bear, bobcat, buffalo (American bison), and antelope.

Since Waite Phillips's first property gift in 1938, over 1,000,000 Scouts and their leaders have participated in the challenge of the backpacking program offered at Philmont Scout Ranch. Staffed camps offer a variety of activities including horseback riding, burro packing, mountain biking, gold panning, rock climbing, forestry, riflery, archaeology, and much, much more—with an emphasis on environmental awareness.

Mr. Phillips held a deep respect for the American cowboy. As part of the gift, he asked that Philmont always remain a working cattle ranch. Philmont maintains cattle, pack burros, buffalo, and riding horses.

Serving as the National Training Center for the Boy Scouts of America since 1950, the Philmont Training Center offers a variety of week-long conferences for volunteers and professionals each summer. While a Scout leader is in conference, programs are planned for all members of the family – infant through adult.



Table of Contents

Welcome.....	Page 2
About Philmont.....	Page 2
What is a Silverado.....	Page 4
Meals and Housing.....	Page 5
At Your Service.....	Page 7
Silverados Programs.....	Page 8
Kids N Kin Program.....	Page 9
Kids N Kin Overnight Campouts.....	Page 11
Evening Programs and the PTC Experience.....	Page 12
What to Bring.....	Page 13
Health and Safety.....	Page 14
Things to Know.....	Page 15
Spare Time.....	Page 17
PTC and Base Camp Maps.....	Page 18
Philmont Hymn and Grace.....	Page 19



What
is a

Silverado's

A Silverado is and all adult program group that partipates in PTC Programs throught the week. The Silverado's program is designed for adults accompanying those participating in a conference. While they are in class you get to go an play! We have day programs for toddlers to adults. There is something for the whole family at the Philmont Training Center. When you arrive unwind, relax, make new friends, and spend some well deserved family time in the beautiful and historic Sangre De Cristo Mountains.

Philmont has a permanent staff of 86 employees plus more than 1,100 summer seasonal staff members. Over 70 staff members are assigned to the Philmont Training Center. Together, these staff provide Administration, Transportation, Family Program, Conference Support, Housing, Maintenance, Food Service, the Infirmary, and Museums. Your happiness is our number one job.

PTC Customer Service Team:

Director of Program: Maddy Houk

Registrar: Amanda Martinez

Training Center Director: Danny Tucker

PTC Guest Services Office Hours

Winter/ Autumn Hours M-F 8:00am-5:00pm

Summer hours M-Su 7:30am-5:30pm



Meals and Housing

Food Service

Meals are served cafeteria style in either one or two shifts in the Dining Hall. Your assigned shift will be determined prior to arrival. Your cooperation in observing these assignments is greatly appreciated. Doing so avoids long lines and ensures table space for all guests.

Guests will line up outside the Dining Hall Veranda, wash their hands, and then enter. Early-arrivals will be led by the staff in reciting the Philmont Grace. Menus vary, but there is always a salad/fruit bar, cereal with milk, and peanut butter and jelly for sandwiches. Lunch and dinner may also have a deli bar and a soup/hot bar with additional food selections.

Guest are welcome to use the East Tent City refrigerator to store infant formula, medications, and specialty food items.

As part of the registration process, you should have indicated If you or a member of your family has special dietary requirements. If you missed this, please let Philmont know in advance by emailing Philmont.TrainingCenter@scouting.org. Philmont's isolated location limits the availability of many specialized food items and these items may need to be brought from home. **Philmont's food service staff will make every effort to meet your needs but may not be able to accommodate persons following strict diets for religious or medical reasons. Philmont does not serve Vegan.**

Terrace Canvas Tents

Living in tents may be a new experience for you. Most participants find the leisurely life of tent dwelling to be comfortable and enjoyable in Philmont's climate. Each Tent City has individual locking handicap accessible shower and restrooms, and a playground.

Your 10' x 12' canvas wall tent is on a wood or concrete platform and contains two metal-spring twin beds with mattresses, chair, a metal locker (bring your own lock), an electric outlet, and a light. If needed, portable steps are available at the ETC office.

Irons, ironing boards, fans, clothing hangers, extra blankets, and other services are available for your use at no charge in the East Tent City hospitality office. Games, evening activities, cobbler nights, patch trading sessions, and other activities will be organized by the Tent City staff or your fellow Tent City residents.

Tent capacity can be increased to three per tent with the use of a military cot for families with small children or you can use one of Philmont's Pack-n-Play cribs.

Save on travel luggage and rent a Bed in the Box. You can reserve a box on the online CampSpot housing reservation system. Each box serves one person and comes with Bedding, Pillow, Towels, and a Rug.



Meals and Housing

Luxury Deluxe Tents

The Philmont Training Center is excited to offer Luxury Deluxe Tents for families and guests to use during their stay. These tents offer room for 5 - 6 with electricity and a ceiling fan. In the main room is a queen-sized bed and in the side room are 2 sets of bunk beds. The Luxury Deluxe Tents are a short walk to our shower house, where individual locking units contain a shower, sink, toilet, mirror, and power outlets. Philmont provides upgraded bedding and towels during your stay in the Luxury Deluxe Tents. Room cleaning services will not be provided during the duration of your stay.



Shower House Facilities

The Philmont Training Center has 72 shower and bathroom units within 4 shower houses that are a short walk from many of our living areas. Each unit individually locks, contains a shower, sink, toilet, mirror, a bench for your belongings, and power outlets. Shower houses are checked and cleaned daily. We do not provide towels unless you upgrade to bed in a bag.



At Your Service



**East Tent City
Hospitality Center (ETC)**

The hospitality center provides a guest a place to relax, play games, and gather for fellowship and fun. The ETC Manager is prepared to help make your stay comfortable. There is a refrigerator to store guest medications, infant formulas, or special food items. The ETC also has extra blankets, fans, hangers, electrical cords, steps for tent platforms, and a host of other items to help make your time at the ranch enjoyable.



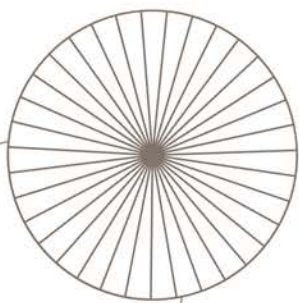
Santa Fe Trail Café

Located in South Tent City, this building will serve as the gathering place for the Silverado's. It will also include a comfort station with coffee.



Laundry

A large coin-operated laundry with washers and dryers is located next to Small Fry and is open 24 hours. Laundry detergent and dryer sheets are available in the laundromat in a dispensing machine, along with a change machine. Additional laundry items are available at the Tooth of Time Traders. The PTC office can also make change.



Bulletin Boards

Check out the bulletin board next to the PTC customer service office for updated information about your week. Also, look for QR codes that will direct you to daily schedules and information about the ranch.



Sunroom

Attached to the PTC customer service office and available 24/7 is the Sunroom and an extra office to help guests catch up on work. The Sunroom includes wifi, a library, Dish TV, and overlooks the Greensward fountain. A spare office is dedicated to faculty and guests with access to a computer, phone and printer. There is a nominal fee for copies.



The Tooth of Time Traders (ToTT)

Scouting materials, personal items, gifts, and Philmont souvenirs are available for purchase at the Tooth of Time Traders, located at Camping Headquarters. The store is also an excellent resource for any of your hiking or outdoor needs. The ToTT accepts credit cards. There is no ATM on property. Check out the ToTT's e-commerce store at www.ToothOfTimeTraders.com.



Silverado's Programs and Activities

Your Week at a Glance

Here is a rough outline of your week in the Silverado's Program. You will receive the available schedule when you check in on Sunday. Your program selections will be made on Monday at the Silverado orientation and meeting. The activity descriptions for each of the activities you can sign up for are listed on the following page.

Activity descriptions can be found on the [Philmont Training Center Website](#)



Sunday	Monday	Tuesday	Wednesday	Thursday	Friday
<i>Silverados can choose on/off ranch activities each day.</i>	Kids N Kin Meet Silverado Orientation, Photo, and Activity Selection	Kids N Kin Meet Half Day and Full Day Activities	Kids N Kin Meet Half Day and Full Day Activities	Kids N Kin Meet Half Day and Full Day Activities	Kids N Kin Meet Half Day and Full Day Activities
Arrival Day	Craft Center Open House Lunch	Lunch	Lunch	Lunch	Lunch
Conference and Family Check-in	Kids N Kin Meet Half Day Activities	Kids N Kin Meet Half Day and Full Day Activities	Family Afternoon	Kids N Kin Meet Half Day and Full Day Activities	Kids N Kin Meet Genevieve's Tea and Closing Social

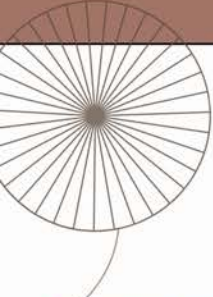


Kids and Kin Program

What is the Kids N Kin Program

The Philmont Training Center features a program of fun activities for people of all ages under the leadership of trained staff members. The Kids and Kin Program features activities designed to give individuals an unforgettable adventure using the resources of the Philmont ranch.

Co-ed age group itineraries are pre-designed and give families a comfortable structure that keeps kids engaged and full of discovery and memory making opportunities. The adult Silverado program gives individuals flexibility to choose from activities on the ranch to New Mexico sightseeing excursions. All ages groups are guaranteed to have fun in a safe and exciting atmosphere.



Depending on the number of participants, age groups may be combined or split.

Small Fry-- Infant to 5 years (programs conducted in the Small Fry Childcare Center)

Trappers-- 6 to 10 years

Loggers-- 11 to 13 years (includes an overnight)

Miners-- 14 to 17 years (includes an overnight)

Kids and Kin age groups meet everyday on the Greensward.



Children must participate in the Kids and Kin program or be under the supervision of a parent. Children may not attend conference sessions with a parent. Children who are ill will be returned to their parents. Disruptive behavior is not tolerated. Children who are disruptive are removed from the program. If the behavior continues, parents will be asked to remove the child from the premises. Kids and Kin family program activities are subject to change based on weather, or other conditions beyond the Training Center's control.

Kids N Kin Program



Trappers

The Trappers program is for 6-10 year old's or 5 year old's who have completed Kindergarten. This program focuses on kids who are of age to be in the cubscout program. Their counselors are prepared to deliver age appropriate program that will keep them engaged and excited. Some programs include going to the Pony Ring and Farm Yard, All day hikes, the climbing wall, the craft center, and much more!



Loggers

The Loggers program is designed for 11-13 year olds who would be classified as younger scouts in the BSA's program. Their counselors are prepared to provide an age appropriate challenge and teach some beginning outdoor skills. This program includes all day hikes, climbing, shooting sports, and an overnight where they will get to campout after dinner and come back the next day for lunch.



Miners

The Miners program designed for 14-17 year olds who would be classified as older youth in the BSA's program. Their counselors are prepared to teach some outdoor skills and the history of the ranch. This is a great program if you child will someday go on a trek and wants a preview. This program includes an overnight at a backcountry camp and evening campfire. They will return the following day after lunch.



Small Fry

The Small Fry Program is for children 5 years of age and under. This program meets daily and has a weekly schedule that includes trips to the pony ring and farm yard for pony rides, walks around PTC Campus, Daily crafts at the craft center, and themed days of the week. The Small Fry program is hosted in the Small Fry building. The building has a full kitchen, AC, bathroom facility, a playground, and a nursery.

	Sunday	Monday	Tuesday	Wednesday	Thursday	Friday
Arrival Day	Kids N Kin Meet	Kids N Kin Meet	Kids N Kin Meet	Kids N Kin Meet	Kids N Kin Meet	Kids N Kin Meet
	Small Fry- Half Day Activities	Small Fry- Half Day Activities	Small Fry- Half Day Activities	Small Fry- Half Day Activities	Small Fry- Half Day Activities	Small Fry- Half Day Activities
	Trappers- Half Day Activities	Trappers- Half or Full Day Activities	Trappers- Half or Full Day Activities	Trappers- Half or Full Day Activities	Trappers- Half or Full Day Activities	Trappers- Half or Full Day Activities
	Loggers- Half Day Activities	Loggers- Half or Full Day Activities	Loggers- Half or Full Day Activities	Loggers- Half or Full Day Activities	Loggers- Half or Full Day Activities	Loggers- Half or Full Day Activities
	Miners- Half Day Activities	Miners- Half or Full Day Activities	Miners- Half or Full Day Activities	Miners- Half or Full Day Activities	Miners- Half or Full Day Activities	Miners- Half or Full Day Activities
	Lunch	Lunch	Lunch	Lunch	Lunch	Lunch
Conference and Family Check-in	Kids N Kin Meet	Kids N Kin Meet	Kids N Kin Meet	Family Afternoon	Kids N Kin Meet	Kids N Kin Meet
	Small Fry- Half Day Activities	Small Fry- Half Day Activities	Small Fry- Half Day Activities	Loggers- Leave for overnighter after dinner.	Small Fry- Half Day Activities	Small Fry- Half Day Activities
	Trappers- Half Day Activities	Trappers- Half or Full Day Activities	Trappers- Half or Full Day Activities	Miners- Leave for overnight after lunch.	Trappers- Half or Full Day Activities	Trappers- Half or Full Day Activities
	Loggers- Half Day Activities	Loggers- Half or Full Day Activities	Loggers- Half or Full Day Activities		Loggers- Half or Full Day Activities	Loggers- Half or Full Day Activities
	Miners- Half Day Activities	Miners- Half or Full Day Activities	Miners- Half or Full Day Activities		Miners- Half or Full Day Activities	Miners- Half or Full Day Activities

Sample Schedule



What is the Kids N Kin Program

Kids and Kin that go on an overnight program will need to bring gear to participate in that program. These age groups include the 11-13-year-olds and the 14-17 year olds. Items Philmont cannot provide everyone include a sleep system (Sleeping bag and pad, hiking shoes, a day pack, 2 water bottles that can each hold a liter of water, a comfortable bag to carry all of their gear to their campsite. Youth will not be backpacking with all their gear. For their overnight they will be hiking with a day pack and their gear will be dropped off. They may have to carry those items a short distance to set up camp.

Camper will need to pack two separate bags for Thursday: a day hike bag & an overnight bag.

Youth Counselors and Outdoor Guides will “shake down” or go through each camper’s bag before departure to be sure that needed items are packed. Any unnecessary items will be kept in the office and returned when hikers get back.

DAY HIKE GEAR

This bag will be with them during the day.

- Daypack with padded straps
- 2-3 Nalgens (quarts) of water
- Raingear
- Sunscreen (optional)
- Bug spray (optional)
- Camera (optional)
- Any medications needed during the day

OVERNIGHT GEAR

This bag will be dropped at their overnight site

- Sleeping bag
- Bedroll (optional)
- Toothbrush (no toothpaste)
- Jacket or fleece
- Sleeping clothes/ Pajamas
- Flashlight or Headlamp
- Any medications needed before bed or the next morning.

MAKE SURE TO HAVE CAMPERS BRING LONG PANTS AND CLOSED TOED SHOES TO BE ABLE TO PARTICIPATE IN ALL PROGRAMS AVAILABLE

The following items are considered “smellables” and should NOT be packed in the overnight bags:

- Shampoo
- Toothpaste
- Deodorant/Antiperspirant
- Candy or Gum
- Foot Powder
- Soap
- Batteries
- Film
- Extra snacks

Please do not hesitate to speak to someone in the Program Office if you have any questions or concerns. Thank you in advance for your help!



Evening Programs and The PTC Experience

Evening Programs

The Philmont Training Center hosts evening programs every night of your stay. The purpose of these programs is to provide time for families to participate in activities together outside of their program groups and conferences. Bring western clothes for Western Night!

In addition to the daily program schedules, your PTC Experience can include a variety of additional fun activities:

Sunday	Monday	Tuesday	Wednesday	Thursday	Friday
Opening Program	Ranger Skills Night <ul style="list-style-type: none"> Night-O Craft Center Climbing Wall 	Western Night <ul style="list-style-type: none"> Western Dancing Branding Face paint Games Astronomy Shooting Sports Family Photos 	Cobbler Night <ul style="list-style-type: none"> Kids N Kin Overnight Craft Center Museum Tours 	Family Programs <ul style="list-style-type: none"> Family Photos Jr Wrangler Shooting Sports Craft Center Astronomy Museum Tours 	Happy Trails BBQ <ul style="list-style-type: none"> Lawn Games Craft Center Closing Program Ice Cream Branding

Duty to God Program

A special Duty to God program and patch is available for individuals and families. Philmont Chaplains assist in providing information about this religious opportunity. The program features materials to support daily devotionals and meditations. Duty to God booklets can be picked up on the information wall in the PTC customer service office.



Flag Ceremonies

Flag ceremonies are the responsibility of the conferences and are rotated among individual classes, with each conference lowering and/or raising the flag for one day. Each ceremony includes a script and appropriate music. All families are invited to participate. Please let the Quartermasters or PTC staff know if you have a bugle or other unique talent that you wish to include in the ceremony.

Junior Ranger

For ages 5-14, this program will keep children active during the week. Pick up activity booklets on the information wall in the PTC customer service office. A special recognition is given at the end of the week for those finishing the appropriate activities.



Junior Wrangler

From Small Fry to age 14, youth will enjoy participating in the Pony Ring and Farm Yard activities to earn a special recognition at the end of the week.

Program Booklets

Located in the PTC customer service office is a wall of informative booklets to help expand your PTC Experience. Booklets range from driving directions to museums and local sightseeing locations, guides to hikes to descriptions of base camp birds and astronomy.

Religious Services

Chaplains from Catholic, LDS, Jewish, and Protestant faiths conduct nightly services at Camping Headquarters at 7:00pm. They also are available to care for the spiritual needs of individuals and families upon request. Each week, an assigned Chaplain conducts interfaith services held at the PTC Chapel. Morning sunrise services are also provided.



What to Bring

Living at Philmont for a week is an exciting outdoor adventure for the whole family! In choosing clothing and equipment, please keep in mind Philmont's elevation (6,600 ft.). Traditional summer weather consists of warm days (70°s to high 80°s), cool nights (30°s to low 50°s), and rainy afternoons

The following is a basic list for each member of your family:

- Pillow
- Towel and Wash Cloth
- Sleeping Bag* and or Twin Sheets (Not needed if in deluxe tent or roofed housing)
- Blankets
- Shower Shoes
- Toiletries
- Scout Uniforms (for scout members)
- Sunscreen*
- Warm Sleeping Garments
- Chapstick*
- Active clothing for free time, trips to town
- Insect repellent*
- Clothing for war days and cool evenings
- Flashlight*
- Walking/hiking shoes or boots* (broken in)
- Camera*
- Wool socks for hiking*
- Extra batteries*
- Sweater/Jacket*
- Duffel Bag for overnight gear
- Hat or Cap*
- Daypack*/School Backpack
- Rain Jacket/ pant or poncho*
- Medical forms
- Long pants- required for horseback riding
- Phone Charger
- Two or Three 1-Liter water bottles*
- For Terrace Tents Residents: You may want to bring a rug, extra hangers, multi-outlet plug, small fan, and a lock for the locker.

***These items can be purchased at the Tooth of Time Traders.**

Here are some helpful tips:

- Philmont does NOT provide bed linens, blankets, or towels, but the East Tent City Manager has a limited supply of emergency blankets if the temperature suddenly drops and/or a fan for super hot days.
- If you have an infant or toddler, consider packing a portable stroller. Walking distances can be a problem for small children.
- Tuesday is our Western Dance, so don't forget your western duds! We will also be branding with our Philmont brands for souvenirs.
- Long pants, long-sleeved shirt, and closed toe shoes are needed for activities such as horse rides and the high ropes and climbing tower.
- Even though we are a Scout camp, we do not recommend leaving items of value unattended in tents or roofed housing. Secure storage is available for small items at the customer service office. Proper identification should be placed on all clothing and equipment. Bring a lock for your tent locker.

Health and Safety

Medical Care and Emergency Procedures

Philmont has a comprehensive infirmary to support the nearly 30,000 participants who visit each summer. This staff is ready to help you and your family with any medical needs that may arise. PTC also has a medic on-duty all week. Should you or your family need assistance, contact the Training Center medical officer. If necessary, he or she can facilitate a visit to the Infirmary. In addition, all Philmont staff go through extensive training and are equipped to assist in any emergency. Keep in mind that PTC is at 6,600 feet elevation. Individuals coming from lower altitudes may experience some discomfort at first. Humidity is low, so visitors should drink plenty of water to avoid dehydration (10-14 glasses a day). Persons who are overweight, out of shape, or who have health concerns should consult a physician before coming to Philmont. While the conferences and family programs are not strenuous, some walking and physical activity is necessary.

In Case of an Emergency

Please alert the nearest Philmont staff member, PTC Medical Officer, the Philmont Infirmary, or dial 911.

Accessibility

The Training Center dining halls and classrooms are wheelchair accessible. Guests may choose wheelchair-accessible tent platforms as part of the housing registration. Due to limited resources, you must provide your own wheelchair. Unfortunately, wheelchair transportation is not available. Other than motorized wheelchairs, other motorized carts are prohibited. PTC has accessible potty chairs and shower chairs available for check-out.

Health Forms

To provide a safe experience at Philmont Scout Ranch, all participants are required to fill out and bring a completed BSA Annual Health and Medical Record with an attached photocopy of your insurance card:

Parts A and B are required for guests in PTC Conferences and all family programs.

Parts A, B, and C are required for guests hiking the Tooth of Time, Kids and Kin youth staying overnight in the backcountry, and participants in National Advanced Youth Leadership Experience (NYLT) and Philmont Leadership Challenge (PLC).

The BSA Annual Health & Medical Record is available on the Philmont Scout Ranch website.

Please do not email or mail your health forms in advance of your arrival.

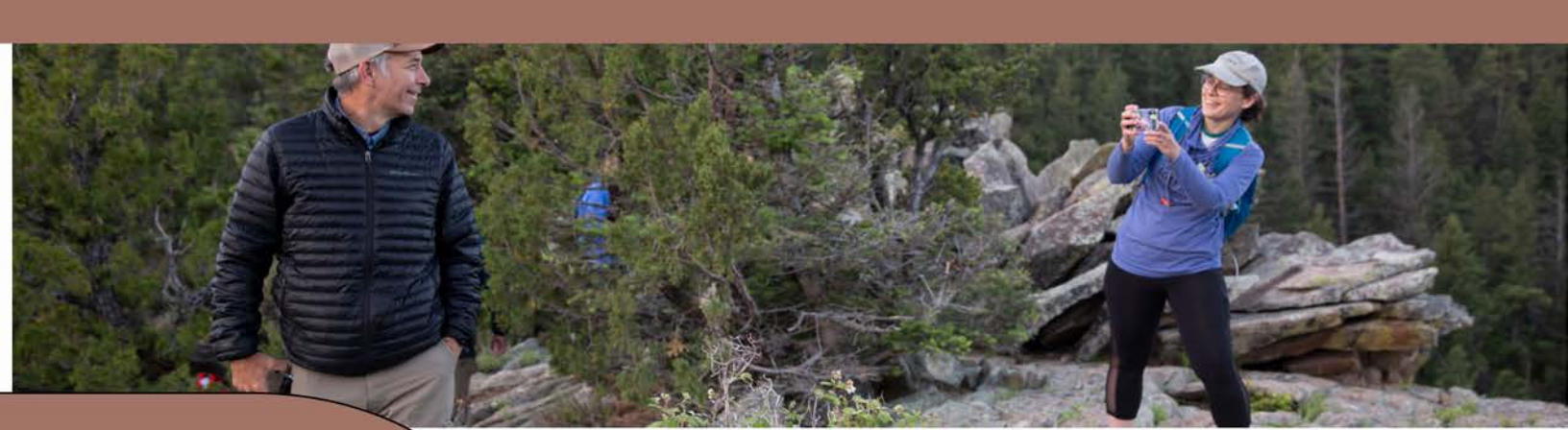
Bring any necessary medication (such as asthma inhalers, Epi Pens, or other needs) as these items may not be locally available.

As part of the check-in process, all forms will be reviewed by the on-duty Health Officer and will be kept on file at the Philmont Training Center Medical Office until the end of the week, when they will be returned.

Under no circumstance will any individual over 295 lbs. be allowed to participate in backcountry programs, regardless of height or age. This limit is necessary due to limitations of rescue equipment and for the safety of Philmont personnel. The maximum weight for any participant going on a horse ride is 200 pounds.

Philmont Weight Limits for Backcountry Participation

Each backcountry participant at Philmont must not exceed the maximum acceptable limit in the weight-for-height chart shown on the BSA Annual Health and Medical Record. Those who fall within the limits are more likely to have an enjoyable experience and avoid incurring health risks. The Philmont staff will use their best professional judgment in determining participation in a Philmont backcountry experience for individuals who exceed the maximum acceptable weight for height. Any exception to the weight limit requires approval from Philmont in advance.



Things to know

Bus Transportation

Philmont buses transport guests and families to backcountry hike turnarounds, Rocky Mountain Scout Camp, High Ropes and Climbing Tower, Fly Fishing reservoirs, museums such as Chase and Rayado, and there is a bus that takes guests to Cimarron each day departing Camping Headquarters. PTC buses depart and return to the PTC parking lot. Please note that several activities may ask that you drive your own vehicle to a location, especially for family free time.

Branding

A hallmark of the ranch is the ability to place Philmont brands on personal items such as hats, boots, water bottles, leather belts, etc. PTC brands items during the Western BBQ. Daily branding is available at the Tooth of Time Traders. Branding is free, so bring your own items or purchase items at our craft center and at the Tooth of Time Traders.



Buffalo and Other Wildlife

Philmont's buffalo pasture is located west of Highway 21 as you drive north toward Cimarron. The herd is maintained in three pastures and you may see them if you drive two miles west of the Administration complex. Photos are welcome, but please do not cross fences and pull fully off the road when stopping. Buffalo are wild

animals and unpredictable. Philmont is inhabited by a wide variety of wild animals, including deer, turkey, skunks, raccoons, and black bears. During your stay at the Training Center, there are many opportunities to see wildlife; however, please keep your distance and respect their habitat. In addition, please refrain from leaving scented items (food, toiletries, etc.) out in the open. PTC tents contain storage lockers for smellable items. Bring your own lock.

Firearms, Alcoholic Beverages, and Smoking

Philmont does not permit the possession of personal firearms while on the property. Possession or consumption of alcoholic beverages is also not permitted on Philmont property. As a facility of the Boy Scouts of America, all buildings and tents at Philmont are smoke-free. Designated smoking areas are the Curtis Pavilion and your own vehicle.

Internet Access and Telephone Service

Philmont has a free wireless internet network. Due to the large number of users, the speeds may not be what you are used to at home. All conference buildings have Wi-Fi coverage.

A public telephone resides on the back porch of the Training Center Office, overlooking the Greensward. Incoming messages to the Training Center Office (575-376-2281) are delivered to your Tent City staff as soon as possible. After 7pm, only emergency messages will be delivered. Fax services are available on a limited basis.

Cell coverage is limited. AT&T service is strongest. Other carriers may have weaker signals.

Things to Know

Mail

While at Philmont, your mailing address is:

Your Name
Conference and Date of Week Attending
Philmont Training Center
17 Deer Run Road
Cimarron, NM 87714

Outgoing mail is picked up around 10:00am from the mailbox outside the PTC office, Monday through Saturday. Incoming mail is delivered to your family via Philmont Staff. Postcards can be purchased at the Tooth of Time Traders and stamps are for sale at the PTC Office. Parcels should be shipped via U.S. Mail, Federal Express, or UPS. Other services do not deliver to Philmont. **Do not rely on "next day" service, please make sure to allow at least one week for deliveries.**

Lost and Found

There are several locations for lost and found items. The first place to check is the PTC office, then the Quartermaster office. The Dining Hall will also have a crate of lost and found items just before you enter the serving line.

Nametags

All guests are to wear their nametags at all times. Nametags provide access to the dining

Pets

Pets, other than those required for assistance (such as seeing-eye dogs), are not allowed at Philmont. The Raton Animal Hospital (575-445-2691) can board pets at a standard daily rate. You must place your pet in a boarding kennel before your arrival at the Training Center.

Philmont Photos

A Philmont staffer will take family photos on the Villa Lawn. Please check the weekly schedule for photo times. Conference group photos will be taken on Monday morning. All photos will be made available for download after your week has concluded. You will receive a QR code for a free download in your departure packet.

Philmont Recognition

Guests will receive patches for their attendance. Upon completion of their course, conference guests will receive a special PTC Conference patch. PTC Family Program patch will also be given out for all family program groups. Conference guests will also receive a certificate. Everyone will receive a Philmont collectible name tag. The familiar Arrowhead patch is awarded to those who complete a full backcountry trek and satisfy other requirements. This is a protected design and is reserved for only backcountry programs. Other unique Philmont patches can be purchased at the Tooth of Time Traders, Craft Center and PTC office.



Tooth of Time Hike

This iconic Philmont landmark hike has limited space and is only available for all-day hikes on Wednesday, Thursday and Friday. This is a very strenuous 5.25 mile roundtrip, staff led hike due to significant elevation change over a short distance, a peak over 9,000 feet, rock scrambles needing both hand and foot support, and rough terrain. Participants should expect hot weather, and minimal shade. This hike is not available during Spring and Winter months due to hazardous weather. This hike is a premium experience and costs \$75 per person and includes breakfast and lunch.

Uniforms

Philmont is the National Training Center of the Boy Scouts of America. As a representative of your council, district, or unit, we encourage you to wear a complete BSA uniform to flag ceremonies and to dinner. Some conferences may ask that you wear your uniform more often. Kilts are prohibited as part of the BSA official uniform. In addition, youth who are involved in Cub Scouts, Scouts BSA, Venturing, or Girl Scouts are also encouraged to wear their Scout uniforms during these times.

Water Bottle Filling Stations

Filling stations are located around the property in addition to restrooms. Please use a cup to fill bottles at the dining hall beverage dispensers. Also, a water filling station is located in Dining Hall next to the main restrooms.

Spare Time

While your conference schedule is busy, you'll have a fair amount of free time to explore Philmont and there are many exciting activities and places to see. In addition to visiting the Villa and the other museums, a visit to Camping Headquarters allows a glimpse into Philmont's trekking operation.

Jogging Trails

Enjoy base camp with a morning run. For the safety of runners and vehicle traffic, please wear a safety vest, do not run on roads, or block all noise. There are jogging trails along Highway 21 from cattle headquarters to Cimarron.

Hiking

There are several approved day hikes you can take during your free time. All are fairly easy and give you a small taste of the New Mexico landscape. You must check out and back in with the customer service office. Hikers need to bring appropriate water bottles,

daypack, rain gear, and a warm jacket or sweater. Sunglasses, sunscreen, a hat, and a first aid kit are also recommended. Only those who meet Philmont's height and weight requirements, are approved by the PTC Medical officer, and are in good physical condition should attempt to hike Philmont's trails.

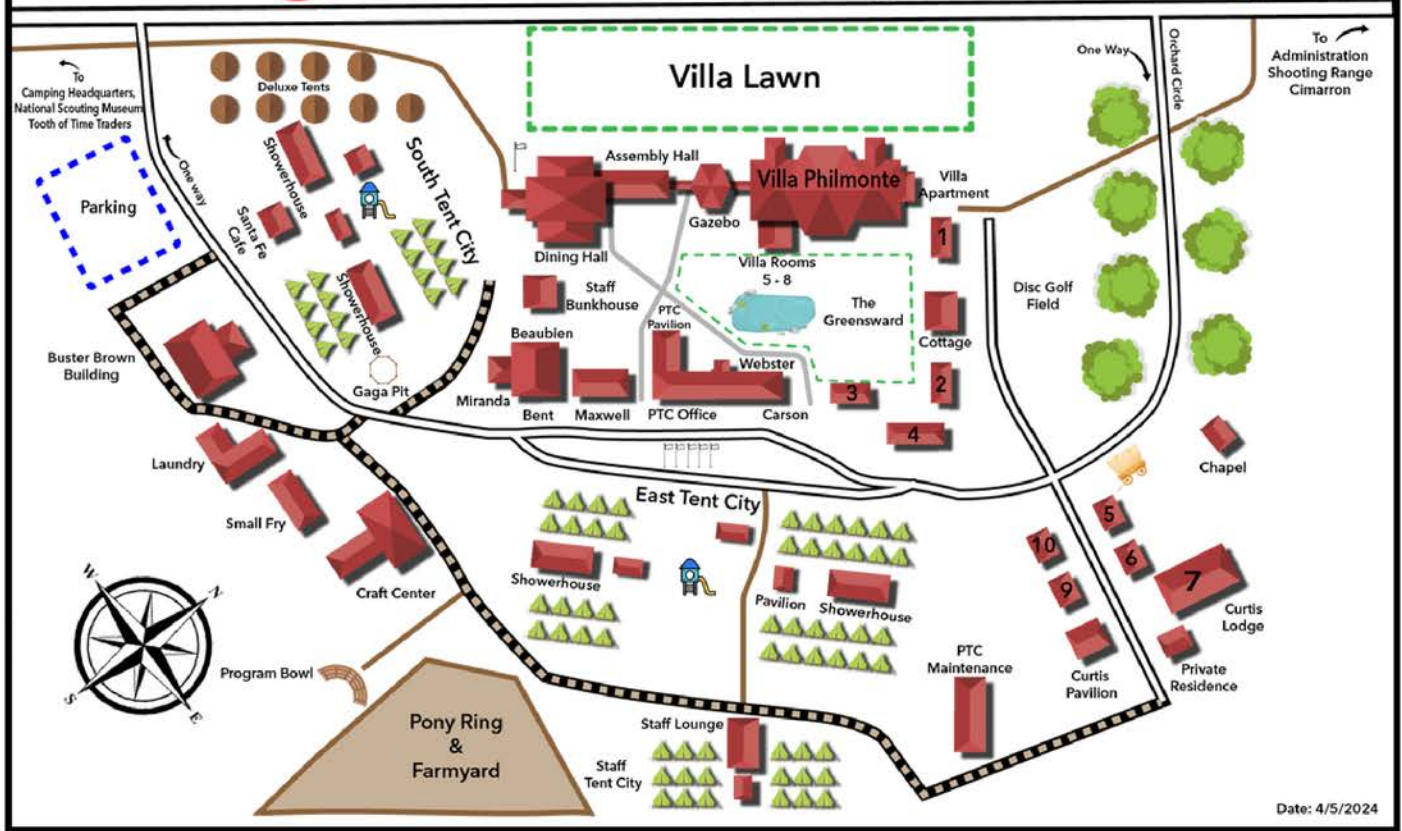
Fishing

Everyone fishing on Philmont property must have a New Mexico fishing license, available for purchase at the Tooth of Time Traders or online at New Mexico's Game and Fish website. Guided fly fishing activities are included in the weekly schedule. You are welcome to bring your own tackle or you can use Philmont's equipment.

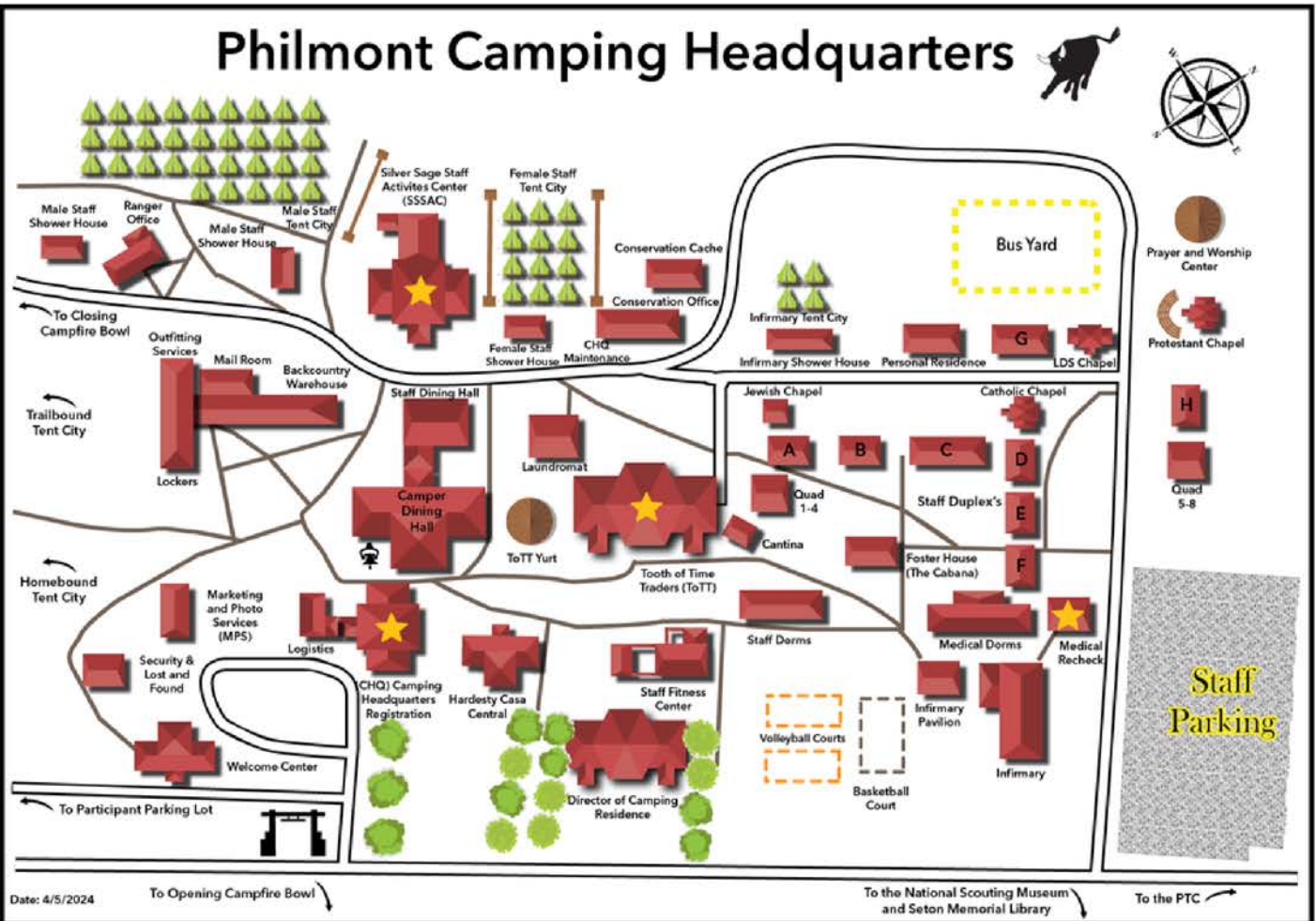
For health and safety reasons, Philmont does **not** allow hikes in any backcountry areas other than the hikes available as referenced by the schedule. This includes the **Tooth of Time**. Please observe this policy during your stay at PTC.



Philmont Training Center

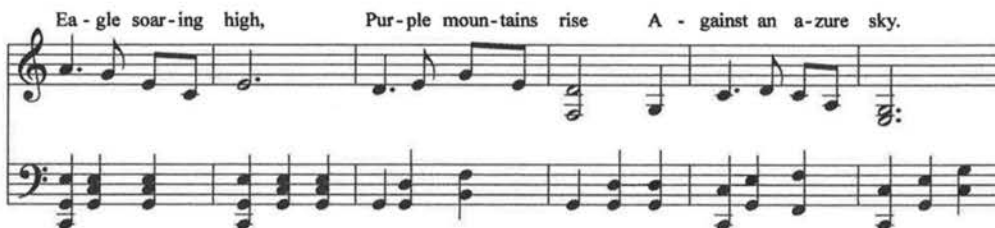
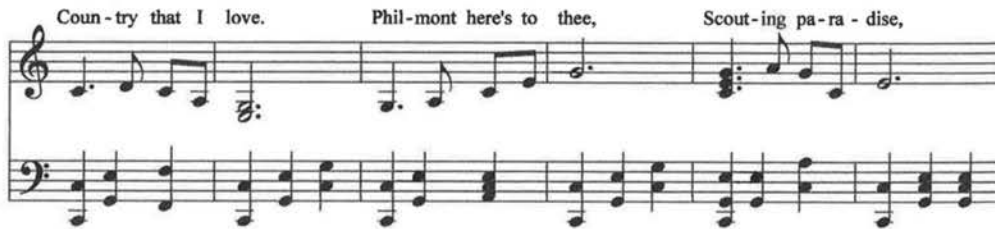


Philmont Camping Headquarters



The Philmont Hymn

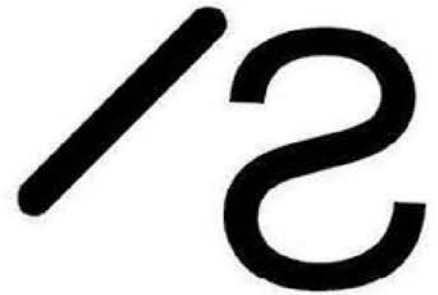
John Westfall



Philmont Grace
For Food, For
Raiment; For Life,
For Opportunity;
For Friendship and
Fellowship,
We Thank Thee O
Lord.



**Philmont Bar PS
Cattle Brand**



**Philmont slash S
Horse Brand**



**Philmont Scout Ranch and Training Center
17 Deer Run Road
Cimarron, New Mexico 87714
575-376-2281**

Philmont.TrainingCenter@scouting.org