

PHILNEWS

JULY 18TH, 2014

76 YEARS OF
PHILMONT

ISSUE SEVEN

2014 Photo Contest Rules

Photos must be submitted by July 21 at 11:59 p.m.

1. Entrant must be the photographer who took all photos he/she submits.
2. Entrant must be currently employed by Philmont Scout Ranch.
3. Entered photos must have been taken on Philmont property, in a Philmont program area or be scenes of Philmont landscapes.
4. No digital alterations (e.g. "Photoshopping") are permitted, except in the Digital Creations category.
5. Each submitted photo must be in a digital format, between 2MB and 40MB. No printed photos will be accepted.
6. To be considered in the contest, all photo entries must be submitted to: registerphilmont.org/photocontest. Prior to judging, all photos will be printed in an 8x10 format (some cropping may occur).
7. All entered photos will become property of Philmont Scout Ranch.
8. A maximum of three photos per entrant, per category may be submitted.
9. Photos stamped with date, time, copyright, titles, text, watermarks and/or special graphic treatments are generally not considered.
10. Over \$600 in prizes will be awarded to contest winners. Three winning photos from each of ten categories will appear in the PhilNews, on PhilmontScoutRanch.org and in the Silver Sage Staff Activities Center. The best photos will decorate 2015 Philmont publication covers.
11. Entrants must include a title and the location from which each photo submission was taken.
12. Contest categories: Camper Activity, Digital Creations, Black & White, Flower & Plants, Humor, Landscape, Porch View, Staff Activity, Storms & Rainbows, Sunrise or Sunset, Wildlife.

Autumn and Winter Adventure Staff Applications now Being Accepted



An Autumn Adventure crew passes through Baldy Town.

Are you looking for some adventure? Are you avoiding leaving God's Country? Are you afraid you'll never see squeeze cheese again?

Applications are now being accepted for fall and winter staff positions. Positions available include: Autumn Adventure guide, PTC conference, food service, Trading Post, Horse Department and Maintenance. In addition, a small number of staff members are employed to support the winter and early spring operations for Camping, PTC and Trading Post operations.

If you would like to be considered for one of these staff openings you need to complete a Philmont Seasonal Employment Application and submit it to the

Personnel Department at Camping Headquarters. The deadline for applications is Monday, July 28 at 5 p.m. Applications received after the deadline will not be considered. Offers for fall and winter employment will be extended after July 31. Only applicants who are employed in the previous season are considered for these second-season positions.

The Autumn Season runs September 2 through November 21 (end date varies depending on the position). The winter/spring season runs from December 27 through March 31. A few positions will run through April until the start of next year's summer season.

Autumn Adventure is a fall

Courtesy of the NPS archives
program that allows a crew to plan a customized itinerary and hike the backcountry with a staff guide. Winter Adventure is Philmont's cold-weather camping program, and includes ski touring, snow shelter building, snow camping, winter ecology, hiking, snowshoeing and the use of winter tools and equipment.

Serving as a member of the Second Season Staff is a great opportunity to be part of the "behind the scenes" action that makes the Philmont magic come alive year round. Applicants should understand they will be expected to perform a wide variety of duties if hired for these positions.

Continued on page 3

Pro-Scouting Interest Reception

On Thursday, July 31 at 6 p.m., there will be a reception at the Villa Philmonte Pool Garden for individuals who are interested in learning more about professional Scouting.

Heavy hors d'oeuvres will be served, so come for dinner. Joining the reception are several Scout executives who are the 'CEOs' for local councils, as well as representatives from the regional and national offices of the Boy Scouts of America to answer questions about professional Scouting.

If you are interested in attending the reception or want to learn more about professional Scouting, contact Chris Sawyer at Camping Headquarters, 575-376-1131 (office) or I-Camp your name and department.

An invitation is not required, but please RSVP so we have an accurate count of attendees.

2014 Winter job Fair

More information on page three

NEWS AND PHOTO TEAM

- NPS Manager**
Bryan Hayek
- PhilNews Editor**
Amanda Push
- PhilNews Writers**
Scott Allen
Dallas Elmore
Kyle Nutter
Emet Blood
- Photography Manager**
Erin Irwin
- Photographers**
Kaitlyn Chaballa
Morgan Court
Christine Henri
Cassidy Johnson
Stephen Maurer
John Mitchell
Bethany Nilson
- Photo Lab Lead**
Imara Chew
- Photo Lab Techs**
Collin Anderson
Peter Friedlander
- Marketing Manager**
Jessica Micheli
- Marketing Staff**
Dominic Baima
- Lead Videographer**
Gabe Marchetti
- Videographer**
Connor Black

July 18-July 25

Friday, 18	Saturday, 19	Sunday, 20	Monday, 21	Wednesday, 22	Friday, 23	Saturday, 25
8 p.m. Salsa Night at Baldy Pavilion	8 p.m. Saturday Shakes at the SSSAC Snack Zone	11 a.m.-1 p.m. Brat Day at Baldy Pavilion	8 p.m. Movie Night and s'mores at Baldy Pavilion Last day to submit photos for the photo contest	10 a.m.-6 p.m. Winter Job Fair in the SSSAC	9 a.m.-1 p.m. Winter Job Fair in the SSSAC 8-11 p.m. Ladies Night in the SSSAC TV rooms	8 p.m. Friday Floats at the SSSAC Snack Zone

“Parents can only give good advice or put them on the right path. The the final forming of a person’s character lies in their own hands.”
--**Anne Frank**

“Never tell people how to do things. Tell them what to do and they will surprise you with their ingenuity.”
--**George Patton**

“We become happier, much happier, when we realize life is an opportunity rather than an obligation.”--**Mary Augustine**

“Happiness is not a goal, but a by-product.” --**Eleanor Roosevelt**

“It is hard to fail, but it is worse never to have tried to succeed.”
--**Theodore Roosevelt**

“He who has never learned to obey cannot be a good commander.”
--**Aristotle**

“As one goes through life, one learns that if you don’t paddle your own canoe, you don’t move.”
--**Katherine Hepburn**

Corrections

If any corrections are seen please notify the PhilNews Editor by emailing philmontnps@philmontscoutranch.org or I-Camp it to News and Photo Services.

Bear Safety Tip of the Week

Playing dead in Philmont is dead wrong. If you are attacked by a mountain lion or bear do not play dead or run away. Either motion will trigger instincts within the mammal to become more aggressive and dangerous. Instead, fight with everything you have at your disposal. People have successfully fought back with rocks, sticks and bare hands. This instance should be a last resort!

Submit Your Work to PhilNews

We are accepting poems, short stories, photos and artwork.

Either I-Camp or email any articles you wish to be considered. Please submit all articles by Friday to be in the following Friday’s issue.

Email: philmontnps@philmontscoutranch.org

Three Generations

Dallas Elmore
Staff Writer

In a summer where Philmont made the millionth participant mark, one crew from South Carolina passed a milestone of their own.

Troop 543 from Huntsville, S.C., completed their trek on July 8. The hike down Tooth Ridge, however, marked the second time the troop had completed a Philmont expedition with a family three generations deep on the crew roster.

Grandfather Gary Powell joined his son Greg Powell and grandson Joey Powell on the 12 day expedition. While having three generations present in one trip is remarkable enough, the trip was a homecoming for Powell senior.

"This is the second, three generation trek I've been on," Powell Sr. said.

In 2012, he joined his son and older grandson on his first Philmont trip. Powell Sr. was 71 at the time and in excellent shape. What he didn't expect was a return visit.

This summer, the retired Clemson professor was given the opportunity to trek through Philmont again, this time with the youngest boy in the Powell family. Again, he hiked well over 70 miles and came in off the Tooth Ridge.

The secret to the now 73-year-old's successful hiking comes from his active lifestyle. He plays tennis, hikes and generally stays active. His location next to some of the Appalachian's best outdoor playgrounds helps as well.

"I'm an hour from the Blue

Continued on page 11



Photo contributed by Gary Powell
The Powell family on their trek.

Continued From Page one, August and Winter Adventure

A number of staff positions are available from August 22-30. These staff will help close base camp and prepare for the fall programs. The Ranch is happy to extend a summer contract to cover this additional time; it is also a good way to earn a little more gas money for the return trip to home or college.

All applicants should write a paragraph with their application that explains how working at Philmont in the fall will help achieve their future goals. Please contact the Personnel Office at Camping Headquarters for an application or for more information.

History Blurb

Emet Blood
Staff Writer

Philmont is here today because in 1930, a man named Waite Phillips decided his property could be put to use by the Boy Scouts of America. After seven years of discussion and planning, Waite Phillips met with Walter W. Head, the president of the Boy Scouts of America at the time, in Tulsa, Okla., to discuss in person the agreement on Waite's donation. He wrote to Head:

"I own a ranch near Cimarron, New Mexico and the village of Cimarron, as you probably know, was the headquarters of Lucien B. Maxwell, owner of the Maxwell Land Grant, which consisted of 1,800,000 acres, the largest private land holding in North America. Maxwell and Kit Carson were old beaver trapper friends and buddies. Carson lived with Maxwell, both at his residence at Cimarron and in a house adjoining him in the first settlement in that country on the Rayado. When I purchased my ranch in 1922, the old manor house of Maxwell was still standing in Cimarron, but since that time it has burned. The residence property and ruins and a plot of ground surrounding it is now owned by Mrs. Charles Springer. The purpose of this letter is to advise you that I have given

Continued on page 7

2014 Winter job Fair List

The 2014 Winter Job Fair is being held Tuesday, July 22 and Wednesday, July 23 at the Silver Sage Staff Activity Center. Hours for July 22 will be from 10 a.m.-6 p.m. Hours for the July 23 will be from 9 a.m.-1 p.m. Staff looking for winter employment opportunities in the ski resort industry are encouraged to attend and meet with employment representatives from the following resorts.

Winter Park Resort: Winter Park Resort is an Intrawest Resort located in Winter Park, Colo. Enjoy all the perks of living in the Fraser Valley west of Rocky Mountain National Park. More information can be found at www.winterparkresort.com/employment/index.aspx or call 970-726-1512. Feel free to contact Recruiter Case Kennedy at CKennedy@winterparkresort.com or HR Recruiting and Training Manager Erica Askelson at EAskelson@winterparkresort.com.

Steamboat: Steamboat is an Intrawest Resort located in Steamboat Springs, Colo. Evade the crowds and enjoy working/

skiing in northern Colorado. More information can be found at www.steamboat.com/steamboat-life/employment/employment.aspx or call 970-871-5135. Contact HR Recruiter Lyndsay Haywood at LHaywood@steamboat.com or HR Manager Michelle Omalev at momalev@steamboat.com.

Squaw Creek: The Resort at Squaw Creek is a hop, skip, and jump from Squaw Valley Resort in the Olympic Valley of California. With its abundance of amenities and location 10 minutes from the shores of Lake Tahoe, the resort remains popular year-round. More information can be found at www.squawcreek.com/squaw-creek-employment.php or by calling 530-581-6612. Feel free to contact Director of Rooms Nick Sponaugle at nsponaugle@destinationhotels.com.

Red River Ski Area: Red River Ski Area, a privately owned ski mountain, hires staff to work in a variety of areas from instructors to retail and food service, and in other positions. Enjoy living within a close community where you can

walk to work. More information can be found on their website at www.redriverskiarea.com/job-openings, or contact Ana Haydon at 575-754-2223 ext. 206 or anahaydon@redriverskiarea.com.

Angel Fire Resort: Angel Fire Resort hires fall and winter staff to work at the resort in a variety of positions. More information can be found on their website at atangelfireresort.com/careers, or contact Maya at 575-377-4217 or hr@angelfireresort.com.

Taos Ski Valley: Taos Ski Valley hires staff to work in a variety of areas from instructors to resort staff. Learn to ski the steeps! More information can be found on their website at skitaos.com/content/jobs, or contact Dawn Boulware at 866-968-7386 or hr@skitaos.org.

Vail Resorts: Vail Resorts hires 8,000 in their Colorado resorts and a total of 13,000 winter seasonal staff in locations across the Western United States. More information can be found on their website at jobs.vailresorts.com, or contact Sunny Larkin at 720-524-5095 or slarkin@vailresorts.com.

Issue Six Sudoku Solutions

Easy

6	5	4	1	3	2	7	8	9
1	3	9	6	7	8	5	4	2
8	2	7	9	5	4	1	6	3
7	1	5	3	2	6	4	9	8
4	8	2	5	1	9	6	3	7
9	6	3	8	4	7	2	1	5
3	4	8	2	6	5	9	7	1
5	9	6	7	8	1	3	2	4
2	7	1	4	9	3	8	5	6

Medium

1	3	4	5	2	7	6	8	9
8	7	5	4	6	9	3	2	1
2	6	9	1	3	8	5	7	4
4	5	2	7	1	3	9	6	8
3	9	1	8	4	6	7	5	2
7	8	6	9	5	2	1	4	3
5	2	8	3	7	1	4	9	6
6	1	7	2	9	4	8	3	5
9	4	3	6	8	5	2	1	7

Difficult

8	3	2	7	5	9	1	6	4
4	1	6	3	8	2	5	7	9
7	5	9	1	4	6	8	3	2
2	6	3	8	7	5	4	9	1
5	9	4	2	6	1	3	8	7
1	7	8	9	3	4	2	5	6
3	8	1	4	9	7	6	2	5
6	4	7	5	2	3	9	1	8
9	2	5	6	1	8	7	4	3

Expert

8	1	3	2	4	5	6	7	9
5	2	7	1	9	6	3	4	8
4	9	6	7	3	8	1	5	2
6	5	9	4	1	7	2	8	3
2	4	8	3	5	9	7	1	6
3	7	1	6	8	2	5	9	4
7	8	5	9	6	3	4	2	1
9	3	4	5	2	1	8	6	7
1	6	2	8	7	4	9	3	5

Mark's Minute: Philmont Friendships

Mark Anderson

Director of Program,

Unit 2

One of the special things about serving as a member of the Philmont staff is the lasting friendships that are made. These friendships can be the result of working closely with your team, hiking and enjoying the "pile of rocks" with other staff members on your days off, working together during emergency situations or just plain spending time hanging out together with people who share your vision.

This past week we hosted the annual Philmont Staff Association reunion and allow PSA members the opportunity to take a seven-day trek. It was fun to watch staff members of the past share their stories and reconnect about the experiences that they enjoyed while living for the summer(s) at 87714. The spirit during the reunion and treks were electrifying. It reminded me of my statements to each of you over the summer about the importance of this place to each

individual who spends time here.

Woodrow Wilson said, "Friendship is the only cement that will hold the world together."

As we continue the summer, delivering a world class experience to each visitor, we know that we must be aggressively friendly and continue to share our joy and enthusiasm as we become part of each person's adventure. Participants, guests and fellow staff members seem friendlier, more neighborly when we adopt an attitude of being aggressively friendly. Each time this attitude is shared it increases the value of the "Philmont experience."

Participants have many contact points with us throughout their stay at the Ranch. Each one of us must be engaged in being aggressively friendly each day during these contact times. This will help each person fully benefit from the Philmont Adventure.

We should stop whatever we are doing, if we can, and offer help whenever we see a participant or

fellow staff member in need. If someone appears to be looking for a particular building or puzzling over a map, offer help. If someone's trying to take a group photo, offer to take the picture so everyone can be in the shot. If someone appears confused about a procedure or process offer to help and answer questions. We need to proactively help each participant as opportunities arise.

This past week we also had the privilege to host the National Assessment Team as part of the National Camp Accreditation Program. Every member of the team echoed the comments by one member who shared his feelings about each of you by saying "so friendly, so professional, so open to communication, so knowledgeable." Their comments identified the strong friendships and the aggressively friendly attitude of each of you. Congratulations and thank you for your part in our successful assessment. Philmont was unanimously accredited to operate.

Theodore Roosevelt said, "The



Samantha Waidler/Photography Manager 2011

most important single ingredient in the formula of success is knowing how to get along with people."

Getting along with people is the start of those lasting friendships that each of us will make this summer. It will also be the key to delivering lasting memories for each participant, guest or fellow

staff member. It is part of being aggressively friendly.

Join me in being aggressively friendly in every encounter that we make. Enjoy your summer with your new friends. I encourage you to continue to find happiness and satisfaction in your journey this summer!

Dallas On Days Off: Las Vegas

Dallas Elmore

Staff Writer

Las Vegas, N.M., is a desert town just like its famous counterpart in Nevada. However, instead of being a mecca for vice, this small New Mexican town is awash in old west history.

Founded in 1835 by settlers who were given land grants by the Mexican government, Las Vegas has seen monumental shifts both in history and commerce.

Stephen Kearney passed through here on his way

to conquer the rest of New Mexico for the United States. The railroad industries glory days can be seen throughout the town.

Over 900 buildings are listed on the national register of historic buildings, most of which date to the town's heyday as a railroad stopover.

At the turn of the century, the town was wealthy enough to boast an opera house, an electric streetcar and a vaunted Harvey House hotel.

Today, Las Vegas is the county seat of San Miguel County.

Although the railroad has lost the economic weight it boasted in earlier days, Amtrak trains still stop there.

Teddy Roosevelt's famous Rough Rider unit from the Spanish American War chose Las Vegas as their official reunion site. A museum commemorates their accomplishments in Cuba

"Founded in 1835 by settlers who were given land grants by the Mexican government, Las Vegas has seen monumental shifts both in history and commerce."

and celebrates Las Vegas history.

Staffers looking to cross another National Park off their list can visit Pecos National Historic Park.

Only 40 minutes away from Las Vegas, the park is at the center of Pueblo Indian, Spanish and Civil War history.

Las Vegas is an easy drive from Philmont.

Staff should take I-25 S then take exit 345.

BURRITO BANQUET

Real Lemonade
Fresh Tortillas

Since 1985
575-483-2921

SALSA BY THE PINT! Hours 10 am - 2pm
Open 7 Days a Week

Memorial Day to Labor Day
Finalist in the New Mexico Magazine Salsa Contest

A TASTE OF ITALY

Right Here

Nana and Nano Monteleone's Deli and Pasta House

418 East Main Street • Trinidad
719-846-2696

Wednesday through Saturday 10:30 a.m. - 8 p.m.
Closed Sunday, Monday and Tuesday

"Only 40 minutes away from Las Vegas, the park is at the center of Pueblo Indian, Spanish and Civil War history."

The Ranger Mile:

Adventure into Carson National Forest: Little Costilla

Welcome to *The Ranger Mile*, a weekly column in which members of the ranger staff will profile various hiking opportunities for staff on days off.

Jason Mazurowski
Associate Chief Ranger

July is upon us and with it comes the opening of one of my favorite peaks in New Mexico: Little Costilla. Towering above the grasslands of the Valle Vidal at 12,526 feet, Little Costilla is both the tallest and northernmost point that Philmont participants can travel on their itineraries. This area of the Valle is home to one of the largest elk herds in the American Southwest, and its remoteness offers some of the best views in the Sangre De Cristos.

The best part about climbing Little Costilla, however, is the opportunity for solitude. Since the peak is situated in such a remote part of Carson National Forest, with no official trails, it is rarely climbed by the general public. Several itineraries provide the opportunity to attempt Costilla, but for the most part the summit is only seen by special treks and Philmont Staff. The experience of breaking tree line on a cool, foggy morning, hearing elk bugle in the distance, knowing that you are most likely the only group of people on the mountain is rare and unparalleled.

To get there, take Highway 64 East through Cimarron and continue six miles. Make a left at

the sign onto Cerrososo Road. Drive slow! Cerrososo is notorious for flat tires. The washboards and ruts can make the drive pretty rough, especially during monsoon season. Two wheel drive vehicles can make it all the way, but speed will ultimately determine the success of your journey.

After about 21 miles you will reach the National Forest Boundary and you will officially be in the Valle Vidal. Continue on this road past the Whiteman Vega and Ring Place parking lots. You will ascend the winding road up Windy Gap and pass Shuree Ponds. Continue about two more miles past Shuree and park at Clayton Corrals. Because of the length of the drive, I would suggest arriving at the Corrals the night before. Camping is allowed anywhere in the National Forest as long as you are 100 feet from the road. However, I would recommend camping in the vicinity of Little Costilla LNT camping area.

To begin your journey, hike northwest from the Corrals on Cerrososo Road until you see an unofficial trail to the right leading into a meadow. Once you cross the meadow the trail will disappear and you will find a barbed wire fence. You can follow the barbed



Eric Martinez/Chief Ranger

Kate Beiswanger, former staff member, approaches Little Costilla summit in August 2012 with Baldy in the background

wire all the way to tree line. Once above tree line, enjoy the sprawling meadows and wildflowers all the way to the summit. There are false peaks along the way, many of which contain USGS benchmarks. A rock cairn and a red coffee can will let you know that you have finally reached the summit. Enjoy the view!

Because of Costilla's remoteness, there are several precautions that must be taken in order to ensure a safe and enjoyable trip. First and foremost, travel with a group or with a partner. Cell phone service is spotty and unreliable in the Valle Vidal and the best way to stay safe is to stay together.

Be sure to fill out a staff backcountry access permit. Even though Little Costilla is not on Philmont property, it is still within our area of responsibility. In the event of an emergency, this is an incredibly helpful resource.

Bring a Valle Vidal sectional map and a compass. There are no official trails on Costilla, and the risk of getting turned around below tree line is very real.

Start early! The weather on Little Costilla is unpredictable. Expect rain every afternoon and use good judgement when starting your hike. Aim to be off of the summit before noon.

Most importantly, have fun! For those looking for a little extra taste of adventure close to home with spectacular views of the Valle Vidal, Little Costilla will not disappoint.



Eric Martinez/Chief Ranger

The view from Little Costilla's summit looking north toward the Spanish peaks, also in August 2012.

Day in the Life

Backcountry Managers



Scott Allen/Staff Writer

Alli Dietz, backcountry manager, helps unload a vehicle with Beaubien staff.

Scott Allen

Staff Writer

Their job is by no means easy: They work full days, sometimes not heading back to Base Camp until after dark. Their responsibility includes a multitude of camps that are difficult to drive to. Their job can be stressful, yet they maintain the happy and professional attitude that Philmont is famous for. They are the backcountry managers.

Allie Dietz, backcountry manager, was kind enough to let us ride along with her for a day in order

to get a feel for how busy her job can be. During that day, we stopped by the Black Mountain dropoff to hand over 320 pounds of coal for the staff to carry down to camp, dropped off returning staff at Beaubien, paused at Phillips Junction to say hello, took a break at Fish Camp to check the new stove, spent about an hour at Clear Creek to eat a late lunch and then hiked to Crooked Creek to make sure they were ready for national inspection. After this was done, we still squeezed in dinner at Phillips Junction then picked up an Infirmary patient at

Continued on page 13

Wranglers

Kyle Nutter

Staff Writer

The wranglers at Clarks Fork aim for routine rather than spontaneity in their dedication to their horses. Horses succeed on routines. It takes time for a horse to understand human commands, and compliance is earned with mutual dedication. Routine reinforces the responsibilities of the horse.

However, routine doesn't necessarily mean dreariness and blandness. Around five in the morning, one of the horse staff gathers all the horses from the pastures on horseback. Termed "jingling," this naturalistic approach of collecting is a



John Mitchell/ Photographer

Hannah La Rue and Emma Skinner.

rare opportunity at Philmont's backcountry horse camps.

"Our pastures are not in a canyon or meadow. There's a lot of terrain, and the corrals are not an easy spot to get to," said Hannah La Rue, wrangler at Clark's Fork.

It is necessary to remind the horses where the secluded corrals reside. The other horse camps have different means to gather horses in the morning. Since Beaubien is a huge meadow, the staff jingle

Continued on page 10

Cimarron Blue Moon

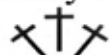
Art, Books, Candles, Jewelry, Pottery, Salsa
New Mexico Gifts & More

341 East 9th Street
P. O. Box 322
Cimarron, NM 87714

Phone/Fax: 575 376 9040
575 376 2223
bmetracy@qwestoffice.net

Mercantile Outfitter

Shirley Dale



THE
OUTFITTER

PO Box 511
129 East 12th Street
Cimarron, NM 87714
(575)-376-9128

Philmont Museum Bike Giveaway

To register, fill out a form with your name, email and zip code at the Philmont Museum



Drawing will be Nov., 10, 2014
Winner will be notified by email

Philmont Staff Association Announces Third Annual Writing Contest

The Philmont Staff Association (PSA) is holding its third annual writing contest for Philmont's seasonal staff members.

The deadline for submissions is July 20. The Philmont Staff Association will announce the winners on August 3. Winning entries will appear in "High Country," the magazine of the Philmont Staff Association. Composers of winning entries will also receive a gift certificate to the Tooth of Time Traders. Up to \$300 in gift certificates will be rewarded.

The judges for the contest will be a panel made up of the Publications Committee of the Philmont Staff Association. Warren Smith will chair the panel. Smith is a past editor of "High Country" and a writer for WORLD Magazine, one of the nation's largest news magazines. He has also written or edited ten books, including "I Wanna Go Back:

Stories of the Philmont Rangers."

"Last year we got a lot of great submissions, and I'm hoping that this year we'll get even more," Smith said.

The Philmont Staff Association Writing Contest will recognize a winner in the following categories:

- **Adventure Story:** Has something strange or unusual happened to you or someone you know at Philmont? A near miss or close call? A dream realized – or deferred? A crazy day-off road trip? Let us hear about it.

- **Spiritual/Personal Memoir:** From Henry David Thoreau to John Muir to Annie Dillard, the "green world" has provided powerful settings for reflection on spiritual matters. What has Philmont taught you about your life or your God?

- **Poetry:** All forms welcome.

- **Fiction:** Lew Wallace, D.H. Lawrence, Walker Percy, Willa Cather, and Zane Grey are just a few of the great novelists who have used New Mexico as a setting for fiction.

Smith offered this advice to those considering submission: "Philmont has such obvious beauty and because we love it so much, it is too easy to fall back on clichés and sentimentality," he said. "The trick to writing about Philmont, especially when you're writing for people who already know about Philmont, is to take what is familiar and somehow make it new. That's what will catch the judges' attention."

All submissions must be submitted by email, as a Microsoft Word attachment to an email. Email all submissions to wsmith@worldmag.com or randy.saunders@scouting.org by midnight, July 20, 2014. Please limit all submissions to 1,500 words.

PhilStars: Coming to a Sky Near You Week of July 18-July 24

Here at Philmont, there's plenty of opportunity to observe the night sky. The solitude of the backcountry and absence of light pollution create perfect conditions for star watchers.

This summer, we're going to be posting weekly predictions and charts that discuss what to look for and when to see it. Information was taken from Astronomy.com

Scott Allen
Staff Writer

As the month of July continues, so does the Holly Moon. This moon cycle is named after the evergreen plant and it reminds us of the immortality of nature. According to the Celts, it's a symbol of masculine energy and firmness.

Note: The faintest magnitude, or level brightness, the naked eye can see is 6m and any number above requires help with binoculars or a telescope. The brightest magnitude regularly seen is -13m which is a full moon.

July 18: The last quarter moon will appear at 7:10 p.m. MDT. After this, the skies will darken everyday until the new moon occurs on July 26th.

July 19: One hour before sunrise, at 5:06 a.m., the last quarter moon will lay directly between Aries and Pisces.

July 20: One hour after sunset, at 9:18 p.m., Saturn will be within two degrees of Alpha Librae, the second brightest star in Libra, which looks like a triangle with legs.

July 21: Two hours before sunrise, at 4:08 a.m., the waning crescent moon will lay under the Pleiades in the eastern sky. The Pleiades, or seven sisters, is an open star cluster in Taurus.

July 22: Two hours before sunrise, at 4:09 a.m., the moon will be just above Aldebaran in the eastern sky. Aldebaran is an orange star that's the brightest star in Taurus with a magnitude of 0.87m.

July 23: Two hours after sunset, at 10:17 p.m., Saturn, Mars and Spica will be in the southwest sky between Libra and Virgo. Spica is the brightest star in Virgo.

July 24: Forty-five minutes before sunrise, at 5:25 a.m., Mercury, Venus the moon and Betelgeuse will create a trapezoidal-like shape in the east-northeast sky. Betelgeuse is the second brightest star in Orion. Also, Jupiter is in line with the Sun on this date. After, it will emerge to the lower left of Venus in the morning twilight of August.

Did you know?

A day on Venus is longer than a year on Venus. Venus takes 224.65 days to complete its orbit (year) and 243 days to complete one rotation (day).

PSA Seasonal Staff Scholarship

The Philmont Staff Association Seasonal Staff Scholarship program has steadily grown over the past seven years.

More dollars for college expenses have been awarded each year, and more Philstaff have submitted applications for these funds.

Both trends continued last summer. 120 summer staff applied for the PSA Seasonal Staff Scholarships in 2013. Thanks to our members' generosity, the PSA awarded a total of \$45,000 to 46 recipients last year.

The Philmont Staff Association is working hard to make 2014 an even bigger year for the Seasonal Staff Scholarship program. There will be more funds available for you to use for school expenses. However, you need to apply.

Forms are available around the Ranch, including the Silver Sage Staff Activity Center and the PSA office. Scholarship awards of \$500 for 1st year staff, \$1,000 for 2nd year staff, and \$1,500 for 3rd year staff will be made for the Fall of 2014 – Spring of 2015 academic year.

Payment of the scholarship will be distributed directly to the school. Applications are due August 31, 2014.

Over the past five years, \$150,000 was been awarded to Philstaff. First-year staff to seasoned veterans, Wranglers to PTC staff to Rangers, freshmen to graduate school students, the Philmont staff has been well represented amongst the scholarship winners.

All college and post-secondary education students are encouraged to apply this year.

Seton Birthday Reception and Gallery Opening

Annual Ernest Thompson Seton Birthday Celebration

The Academy for the Love of Learning invites you to join us in a celebration of Ernest Thompson Seton's 154th birthday on August 14.

The event also marks the opening of a new exhibition, "Bird Portraits" featuring Seton's finest avian illustrations. The images come from the Academy's collection of Seton artwork plus a special loan of selected works from the Philmont Museum and Seton

Memorial Library at Philmont Ranch in Cimarron, New Mexico.

Times / Program

6:30 – 8:30 p.m.: Opening Reception (light refreshments)

7:30 p.m.: Annual Champagne Toast to the Chief

(Gallery also open: 10 a.m. – 4 p.m.)

This event is free to the public.

For more information: call 505-995-1860 or email learn@aloveoflearning.org



Continued From Page Three, History Blurb

some thought to the proposition of restoring this property for a state and national shrine for the Boy Scouts, provided the idea is received with favor by the Scout organization and the influential citizens of Colfax County, New Mexico. Adjoining this village is a wonderful mountain country, part of which might be used as recreation for the Scouts. My plans are immature but I would like to have your reactions to this proposition."

Phillips' donations to the Boy Scouts includes roughly 215 square miles of land near Cimarron, N.M., which is now Philmont Scout Ranch. Although he was reluctant to make the initial donation of almost 36,000 acres due to its appeal to his son, Elliott, he eventually parted with the land in 1938. The second land donation made in 1941 was the larger of the two at almost 91,000 acres of land. This made Philmont the largest youth camp which which then consisted of 127,000 acres. Today Philmont is 137,493 acres.



Connect to Past,

PRESENT,



and future Philmont staff with the...

PHILMONT STAFF ASSOCIATION

Look forward to:

High Country magazine, year-round events, PSA water bottles and other items, books about Philmont history and lore, Seasonal Staff Scholarships, and more!!!

It's just \$15.00 for a year's membership!

I-Camp this form to the PSA or stop by our office next to the Beaubien Room at PTC.

SIGN UP NOW!!!

www.philstaff.com

Name: _____ Position/Dept.: _____

Mailing Address: _____ City, State, ZIP: _____

Birthday: _____ Email: _____

Signature: _____ MARK HERE FOR PAYROLL DEDUCTION (through July 31): _____

Reload and Shoot

Dallas Elmore

Staff Writer

At Harlan and Sawmill, Philmont's two shooting and reloading camps, Scouts are guided through a reuse and recycle program that emphasizes gunpowder and brass.

Harlan's focus is shotguns, while Sawmill is a rifle camp. Both, however, are focused on introducing Scouts to an activity that requires an emphasis on precision, placement and safety.

Both camps are hard at work by 8 a.m. By then, crews are already headed to the reload shack to begin a lesson on an aspect of shooting that most participants are unfamiliar with.

Harlan reloads shells for their Ruger over-under shotguns. After watching a demonstration of the reloading process, Scouts install new primers, load gunpowder, and crimp the round themselves. Each piece of ammunition the Scouts load is taken down for their use at Harlan's clay pigeon shooting range.

Scouts and advisors each shoot three rounds apiece after receiving a safety talk. The range instructors then guide each

shooter on the best way to handle the shotguns for a successful shoot.

Scouts seemed to enjoy the reloading as much as shooting.

"[Reloading] was a little wonky at first" said Marshall Mozisek, from crew 704-F out of Victoria, Texas. "But then I got used to it."

Shooting clay pigeons instead of birds was a change of pace for some participants.

"I like shooting clay more than shooting birds, said Tom Stott, crew advisor for 628-P02 from Coal City, Ill. "Its a nice program they've got here."

At the end of a long day of shooting, the staff at Harlan break for dinner. After washing their dishes, however, one of Philmont's long standing traditions start up.

"Burro racing is the most dangerous sport on the ranch," said Philip Kuldell, a program counselor at Harlan.

Starting as soon as the notoriously single minded burros meet the crews, the out and back race covers roughly two hundred yards. The relatively short distance can seem like miles since the burros have a tendency to be



Cassidy Johnson/Photographer

Matt Alexander, program counselor, helps Raylor Gonzalez of crew 704F shoot on Sunday, July 6 at Harlan.

stubborn.

"We named the burros after characters from [the movie] Talladega Nights," Kuldell said, referring to the NASCAR themed comedy.

At Sawmill, the day starts earlier than most backcountry camps. Staff are up at 5 a.m. to prepare for advisors coffee on the front porch of the main cabin.

Crews can stop by to enjoy what is widely considered the best sunrise on the Ranch while relaxing on the porches wooden chairs or swing.

Sawmills 30-06 rifles are supplied with reloads from the reloading cabin. Like Harlan, each Scout has the opportunity to load and shoot three rounds.

"Some kids are really engaged. They ask their parents if they can get reloading tools for Christmas," said Angelique Winterton, a program counselor at Sawmill.

The range sees about 500 shots a day from Scouts and advisors with varying levels of experience. Introducing a Scout

to shooting has its own rewards.

"Its really awesome to see a kid shoot around and then buy more [rounds] because he enjoyed it so much" said Emily Megee, the camp director at Sawmill.

The evening program at Sawmill focuses on a less combustible activity. Besides gun cleaning, interested crews are able to play animal charades, a STEM project that they put together with the help of the conservation department. The new program is an exciting and educational departure.

"Its really entertaining to watch crews impersonate mini bears," Megee said.



Cassidy Johnson/Photographer

Participants from crew 702N1 wait for Carsey Brooks, program counselor, to tell them to begin shooting on Monday, July 7 at Sawmill.



Cassidy Johnson/Photographer

A participant shoots on Monday, July 7 at Sawmill.

Trading Post/Commissary

Dallas Elmore, Kyle Nutter and Emet Blood

Staff Writers

Baldy Town, Ute Gulch and Phillips Junction are the three backcountry commissary and trading posts on the Ranch. Baldy Town handles the North country, while Phillips Junction is responsible for South Country and Ute Gulch the Central country.

The staffers prepare for the day in the morning, waking up around 6:30 a.m. to begin their chores for the day. Crews start arriving around 7 a.m. and the day doesn't end until 5 p.m. Sometimes, crews miss their food pick up, and staff have to hike their food to them. Baldy Town supplies around 20 crews a day with food, Ute Gulch can see as many as 30 to 40 and Phillips Junction cares about 15.

For Baldy Town, crews stop coming in around seven, the same time as advisor's coffee.

"Sometimes advisors won't even go set up their gear, they'll just stop at the cabin for coffee and to socialize, and then head out to their camp



Cassidy Johnson/Photographer

A participant purchases a game at the Ute Gulch trading post on Monday, July 7.

later," said Scott Hamilton, camp director of Baldy Town.

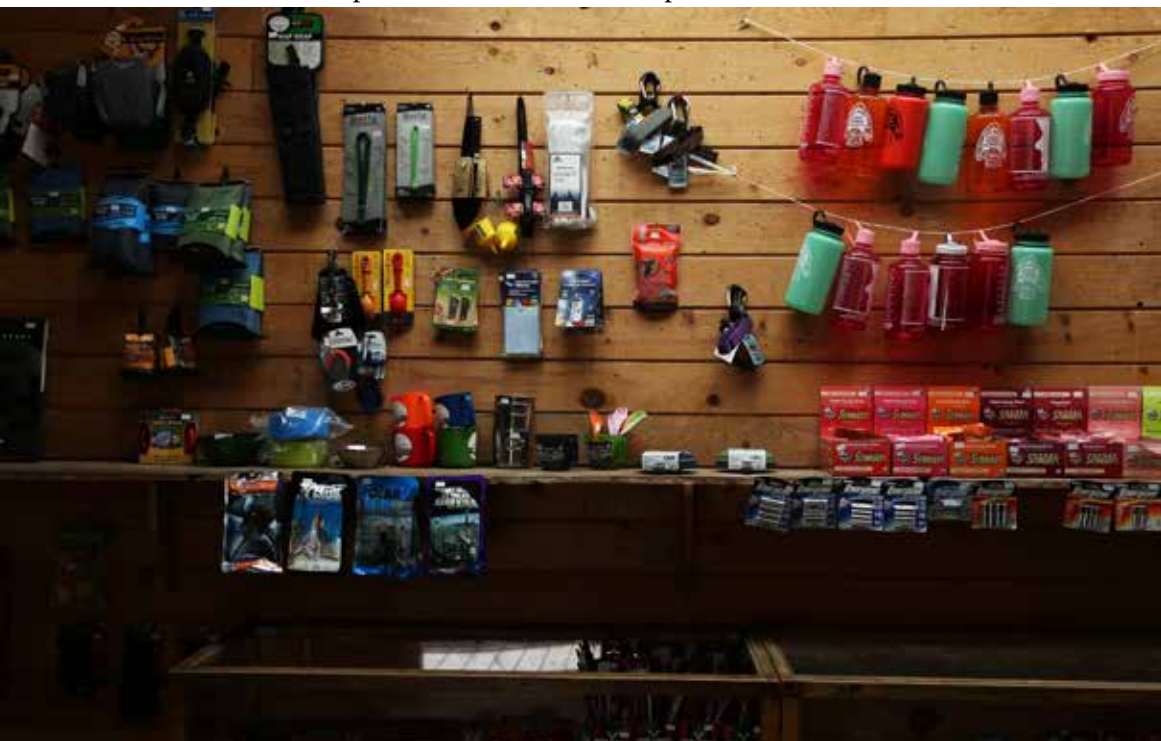
Baldy Town is built on the site of the old community that laid at the base of the mountain. There are no remaining structures, but there are original building foundations. The commissary is built on the school foundation and follows the exact design of the old school house. Staff tents are scattered around the Baldy Town hotel foundation.

Mining operations at Baldy Town dug up almost \$2 million worth of precious

metals, which translates to almost \$6 million in today's money. At one point, the town supported a population of 2,000 people.

A brand new cabin features seven bedrooms, a fully functional kitchen, and two staff showers. The camp is also adding two kiosks with geology information and the history of Baldy Town for interested participants.

"I love this camp, because we are a service camp the crews are really tired when they get here, and we give them food, chocolate milk



Cassidy Johnson/Photographer

The trading post at Ute Gulch commissary on Monday, July 7.



Kaitlyn Chaballa/Photographer

Jeremy Evans, camp director, unloads the commissary order on Wednesday, June 25, at Phillips Junction.



Erin Irwin/Photographer

Baldy Mountain towers above the new Baldy Town cabin, which some refer to as the Baldy Town Hotel.

and a place to rest and clean up. It's awesome to be able to help people feel good after a tough hike," Hamilton said.

The other two commissaries don't host campers at night. The lack of program leaves Phillips Junction and Ute Gulch free to maximize their interactions with Scouts.

"We don't have program so that gives us full reign to make sure they [crews] just have fun," said Jeremy Evans, the camp director at Phillips Junction.

Ute Gulch's location puts it squarely in the middle of ranch activity. Part of being so centrally located makes it the most visited commissary on property.

"We see 80% of the itineraries this summer," said Ian Walling, the camp director at Ute Gulch.

Each of the three camps

also has a trading post. Participants tend to purchase Toblerone chocolates or Honey Stinger products for a treat on the trail, but the store also helps Scouts who need new socks, pack covers or any other essentials.

A typical day for the trading post at Ute Gulch sees almost \$2,000 in sales. That much sales volume inspires time saving innovations from the staff.

"We've managed to memorize the single digit dollar tax for purchases," said Perry Fulford, trading post manager at Ute Gulch.

Even with all of the activity at all three of the camps, staffers find time to enjoy their jobs.

"Working in the backcountry is like a dream," said Vince Haines, the commissary manager at Ute Gulch.

Weekly Advice Column: PhilNeighbors

Ask Philmont Training Center Maintenance

Elliot S. Barker State Wildlife Area

Scott Allen
Staff Writer

What does PTC maintenance do?

We take care of the facilities and infrastructure at the Training Center. We also maintain Rayado and we are the welding function of the Maintenance department.

Any typical questions you get asked?

Sometimes people will come to report a problem, but we never really get asked questions much. People just come on by if they need something fixed.

Has anything changed since last year?

Not really ... There are three of us full-time and three seasonals. And all of the employees are returning staff.

Favorite part about your job?

Making sure everything runs well and people are safe and have a good time while they are here.

What should staff know about PTC maintenance?

If we do our job right, you don't even know we're here ... We do a lot of preventative maintenance when no one's here. People think that summer's our busiest time, but summer should be our



John Mitchell/ Photographer

Jeff Ogata, PTC Maintenance.

quietest time cause we should've fixed everything and done all our preventative maintenance

so things don't break and things are good ... It's keeping up with the things that break through usage ... Hopefully, theoretically, summer should be our quietest time of the year.

What would you say you work on the most?

We paint a lot when people aren't here. A lot of classrooms. A lot of buildings.

What are your hours of operation?

During the offseason, we're normally 8 a.m. to 5 p.m., with guys on call for Saturday and Sunday, but when summer hits, we're seven days a week, 24 hours a day.



Kevin Boucher/Photographer 2013

Byron Sprott, PTC Maintenance technician, splices wood at the PTC Maintenance Shop for fall projects on Friday, August 2, 2013.

Kyle Nutter
Staff Writer

This year marks the 50th anniversary of the Wilderness Act of 1964. Philmont has had a partnership with the New Mexico Department of Game and Fish just as long. The neighboring Elliott S. Barker State Wildlife Area provides photographic opportunities of unique vistas and wildlife viewing. An impressive view of Baldy Mountain waits atop Wilson Mesa.

Wilson Mesa offers expanses of meadows, pockets of forests and ponds. The logging industry of the 1920s created this environment, and forest fires that blazed since then have maintained it. Natural forest fires cultivate healthy forests, and the Elliott Barker Wildlife Area is a prime example of fire ecology and the importance of regular fires.

Even after 50 years of use, trails have never been built on

the property. Scouts utilized old logging roads and those established by the Stern Land & Livestock Co. during the 1900s. Man-made fire breaks, game paths and bushwhacking present themselves as a potential path across Wilson Mesa. Overnight camping is banned, but that restriction forces participants and advisors to appreciate the short time they have there.

Philmont staff and participants learn the significance of fire ecology, healthy forests, wildland stewardship, watershed improvement, invasive species control and leave-no-trace principals while on the Elliott Barker Wildlife Area. Conservation efforts on the property include wildland fire support and lookout, invasive species eradication and working with the Cimarron Watershed Alliance to improve the quality of local streams, rivers and watersheds.

Continued From Page Five, Wranglers

feedbags and the horses come. Horses at Ponil graze in a long canyon, and the only efficient way to collect them is to drive a truck through the canyon. The horse staff at Clarks Fork practice a genuine cowboy chore, and the sunrise looks bigger on horseback.

After jingling, the horses are fed grain and saddled for their first of two "dude rides." Besides caring for the horses, dude rides are the main responsibility of the wranglers. Forty-six horses are available but the number of riders cannot exceed 35 for the 9 a.m. or 1p.m. rides. The staff listen to the itineraries read over the radio the night before to calculate approximately how many riders they'll have.

A riding demo is given before Scouts mount their steeds. The rides take Scouts through forests,

open pastures, over mesas and deliver views unobstructed by worrisome foot placement.

"It's neat because for a lot of Scouts, this is their first time riding a horse," said La Rue.

Scouts on the last ride of the day unsaddle their horse for a more personal experience. Once unsaddled, the horses disperse into the pastures. Wranglers ride out to the hay-feeders and throw hay for them. The corrals are then cleaned. Tidiness helps save time for those jingling the following day.

"Everything is put away in its place for the next day," said La Rue.

To break up the day, wranglers sometimes take the horses for rides.

"[It helps] you remember why you're here," said La Rue.

Continued From Page one, Three Generations

Ridge Mountains," Powell said.

In addition to staying fit, he passed on his passion for Scouting to his son, Greg. The elder Powell is the unit commissioner for his home council and was the Scoutmaster of a troop when Greg was growing up. Greg, however, was registered in another troop in the same town. When Greg went on his first trek to Philmont in the 80's, he missed the chance to bring his father along.

"I didn't even think to invite him as an advisor," Greg said.

Now that Greg has kids of his own, he thought differently.

"It seemed very natural to include him with my oldest."

After 2012, Greg waited a few more years for his second son, Joey, to come of age for a trek. When he was looking for advisors, he knew who to call. All three Powells completed



Photo contributed by Gary Powell

The Powell family on their 2014 trek.

the trek in good condition. To some, having one's father and grandfather on a trek would mean a lot of pressure. However, that didn't phase the 15-year-old senior patrol leader.

"I got plenty of 'eagle advice' from my dad and grandfather," said Joey Powell.

The Powells are already

looking to their next Philmont adventure. Greg has a daughter who is 12, and hopes she will be up for a treks the in a few years. Her grandfather's example should influence her, like it motivated others on the trail who asked for photos to inspire them to hike once they get to his age.

Continued From Page one, NAYLE

that separate them from anyone they would know from their home councils or units. These units of six to eight scouts engage in activities that force them to pass through the four stages of team development.

"It's a really cleverly designed syllabus," said Keith Nathan, an adult faculty member for the program during Sessions two and three.

Each day brings different trials. The participants have to be flexible in order to achieve that day's objective, whether it be completing the COPE course, Search and Rescue, or an outpost hike.

Scouts find that the leadership skills they learn in the classroom have practical applications. The repetition of the team building process reinforce the servant leader theme of the program.

"The purpose of NAYLE is to make leadership skills a habit," said Emily Goelzer, a NAYLE Crew Guide for Session two.

Participants begin to notice not only their own strengths and

weaknesses, but others as well. They learn to distinguish between the different types of leaders and how to implement servant leadership back into their home units.

"I've learned to notice what type of leader other people are, as well as notice what type of leader I am," said Pavan Mody, a NAYLE Session two participant.

The opportunities for graduates of the course do not end with the hike up the Tooth of Time. Most graduates are eligible to join the National Youth Leadership Society of the Boy Scouts of America, an organization that looks to fill its membership rolls with graduates of the NAYLE and NYLT programs.

For past participants looking back on the NAYLE course, the difference between what they thought and what they now know about leadership is striking.

"I thought I needed to be the Red Power Ranger to be a leader," Eddowes said "[The course] showed me I have it in me."

CIMARRON TRADING COMPANY

"If you can find it,
we have it"



Knives, Swords, Flags,
Bajas, Blankets and Zippos

Open 8 a.m.-8 p.m.

10% Staff Discounts

Free Wifi on the Front Porch

Plants at Philmont

Kyle Nutter
Staff Writer

Over 20 species of Paintbrush grow in the Rocky Mountains.

The common name for each species is normally the color of the flowers placed in front of “paintbrush.” Pictured is Scarlet Paintbrush, *Castilleja miniata*, which has reddish-orange petals. Examples include Yellow Paintbrush, *Castilleja occidentalis*, which has yellow flowers and Rosy Paintbrush, *Castilleja rhxiifolia*, which has rose, purple or pink flowers.

Scarlet Paintbrush extends four to 36 inches upwards. It grows as a column with pointed leaves one half to three inches long. The tips of the colored flowers are like frayed rope dipped in red paint.

The plant blooms between June and August, and develops in well-drained, open or



John Mitchell/ Photographer

Scarlet Paintbrush, *Castilleja miniata*.

wooded sites in the foothills to the montane ecosystems. Scarlet Paintbrush can be found around Base Camp, Urraca Camp and Cito area. Dan Beard and Fish Camp have Yellow Paintbrush. Rosy Paintbrush grows on the Baldy Saddle and Mount Phillips.

Most Paintbrushes are parasitic. Their roots wrap around the roots of other plants.

In the absence of landing pads for insects, Paintbrushes depend on hovering insects and hummingbirds for pollination.

Trail of Courage

Philmont Scout Ranch has been asked and agreed to launch the Trail of Courage Program. Over the next few years, it will be rolled out to all parts of the Boy Scouts of America including other high adventure bases, summer camps and Boys' Life Magazine. I encourage you to join me by participating in the Trail of Courage-right Decisions/Right Now-Be Tobacco Free. Teenage smoking dropped from 36.4% in 1997 to 21.9% in 2003. However, each year since 2003 the percentage of teenage smoker continues to rise! This is a startling fact, since we know the danger and risk of smoking to our health.

What is the program? The program allows conversation to take place with each crew. These conversation focus on the seven parts of the program:

1. Become personally fit.
2. Eat a nutritious diet.
3. Exercise.
4. Be tobacco free and not smoke or use smokeless products.
5. Live free of drug and alcohol habits.
6. Learn the seven cancer danger signs.
7. Live the Scout Oath and Law

Who Leads the Conversations? Each Ranger is asked to coach the Crew Leader to guide conversations during the crew's trek that focus on each of the seven parts of the program.

On the last night of the trek, the Crew Leader will encourage the crew to take the pledge and commit to the seven parts of the program.

The recognition for making the pledge and participating in the program includes a Trail of Courage patch and Boys' Life Personal Pledge Card. These items are available to the crew free of charge at the Safekeeping Counter in Camping Headquarters.

Can Staff Participate? Yes! Each member of the Philmont Staff is asked to participate in the Trail of Courage program.

Step 1: Review the material in the Trail of Courage-Right Decisions/Right Now-Be Tobacco Free brochure. You may wish to discuss the program with your friends and your department.

Step 2: Make personal commitment to pledge to work on achieving each of the seven part so the program.

Step 3: Complete the Staff Pledge Card and turn it in at the Personnel Counter at the CHQ Office.

Each staff member who participate will receive the Trail of Courage patch and the Boys' Life Personal Pledge Card.

Trail of Courage -Right Decision/ Right Now-Be Tobacco Free Pledge

"I pledge to become personally fit, eat a nutritious diet, exercise, be tobacco free, live free of drug and alcohol habits, learn the seven cancer danger signs and live the Scout Oath and Law."

Printed Name _____ Signature_____

Department _____ Date_____

Cimarron West

Western Wear,
Boots,
Moccasins
& Hand-made Belts

Straw Hats
Bowler Hats
Wester Hats
Outback Hats
Leather Hats
Bull Whips!



Casey & Gayanne
Jeffers

575 376 2423
256 10th Street
Cimarron, NM 87714

Continued From Page Five, Backcountry Managers

Crater Lake and ended up staying for their campfire. The day lasted 12 hours and it was one of the longest I've ever experienced at Philmont in my three years as staff. It's a tough job. Here's a rundown of what they do.

Describe the average day of a BCM.

"So, we'll usually start out the day by having a meeting with all of

the backcountry managers just trying to figure out what we're going to be doing for the day, who's going where, what supplies need to get out to which camps and things of that nature. Then, Gene will set up our dispatches, so we'll bring Health Lodge patients out to reunite with their crews, or we'll bring out program supplies or staff returning from days off or just people who want to ride along on their days

off too ... We like to check on them and make sure they're doing okay. Our main jobs are program and personnel support. If there's anything that we can do for a camp or particular staff member, then we're always going to try and get it done."

What decides who goes where?

"Sundays are Hunting Lodge, Cyphers Mine, French Henry and Baldy Town because we take up and drop off geologists at those locations. So, everybody has a scheduled day where we go and visit them. And then, depending on if there's a run that needs to be done, we can go out to our report camps. And so each BCM is assigned to two different regions in the backcountry: my region is the deep south and then shallow-central or the Cito area: Cito, Hunting Lodge and Clarks Fork ... If you have some extra time you can get out to your report camps, but some runs just take all day."

How does the different programs work with each BCM?

"We have camps that are program camps. For example, Stephen Alexander is really good with the guns, more so than any of the rest of us, so if any of the gun camps have any issues or need anything, they can talk to Stephen about that ... We can dictate it by either report camps, who's going where and also by programs. Additionally, if a camp needs a supply, we can go out there and get them what they need, either people or supplies."

What's the most difficult part about your job?

"Honestly, I think that the most difficult part is not being able to get to everywhere all the time. You want to get to every camp every day, but it just isn't possible ... Thankfully there's a lot of flexibility with getting to all of the camps."

What is the favorite part about your job?

"It's that we get to do a little bit of everything. We get to go to all of these different camps, and see new

people and experience different programs all in the same day. We could go to four, five or six different camps in one day. And so seeing all these different people and being able to interact with them is really an awesome part of our position. And also being able to sit down with crews and hang out with them too. All of the backcountry managers this year were camp directors in the past, so we're used to doing advisors coffee and things of that nature."

What should staff know about getting a ride into the backcountry?

"If you want a ride in the backcountry, go and see Gene Schnell at 7:30 a.m. (or earlier) and make sure that you give him your name and where you're planning on going and if you're a returning staff member or are just on days off ... Things to know: we're always here to help anyone as much as we can. If there's anything we can do to help you guys, we're here for anything you need."



Scott Allen/Staff Writer

Alli Dietz, backcountry manager, discusses national inspection with Nicole Butler, camp director at Fish Camp.

Ex St. James Hotel, Restaurant & Bar
Cimarron, New Mexico

Pizza on the Patio

Tuesday - Saturday
2 p.m. until 9 p.m.

Dining room open
7 p.m. until 9 p.m.

For reservations call
575-376-2664
www.exstjames.com



Russell's Sundries

"For all the little things you forgot to pack."

31083 Highway 64
Cimarron, NM 87714
575-376-2502

Monday - Saturday 9 a.m.-7 p.m.
Sunday 10 a.m.-5 p.m.

RED RIVER SKI AREA

"FUN IN THE SOUTHWEST SUN & SNOW!"

Winter season employment starting in November!

Meet us at the Recruitment Job Fair hosted at Philmont: July 22-23, 2014

Experience life in the Sangre De Cristo Mountains, where everything you need is within walking distance! Enjoy the snow with a free employee season pass and equipment rental discount. Employee housing available.



Available seasonal positions:



Ski/Snowboard Instructor
Youth Ski Club Assistant
Retail Sales Team Personnel
Food and Beverage Personnel
Lift Operator/Ticket Scanner

RedRiverSkiArea.com

400 Pioneer Road Red River, NM 87558
p: 575-754-2223 F: 575-754-2726

Apply online at: www.redriverskiarea.com/job-applications
-or- send resume to Human Resources: humanresources@redriverskiarea.com

Wanted: Whiskers

Let it Grow

Emet Blood
Staff Writer

In 1975 an 18-year-old by the name of Ben Crone became a future bearer of an extraordinary mustache, by simply letting it grow out. He began his journey of young adulthood with a facial hair style that many young men nowadays have avoided.

What some young American men don't realize is that we have been given the opportunity to change the tide of fate by stirring waves of inspiration across the land. Men who begin their mustache-growing journey young, raise the chances of the general populous remembering what it once meant to be a gentleman. We can create hope for the few facial haired men out there and right here at Philmont that strive for true dapperness.

One common misconception of the mustache is that it is easy to grow, wear and maintain. Most folks don't want to work for a stache worth showing proudly, hence, the disappearance of the stache over time. It's like the gym: you can talk about going all year long but you'll never get a strong mustache if you just sit in front of your mirror wishing your face would clean itself up for you.

The disappearance of the stache is also due to the

moustache's relation to Stalin, Hitler and other terrible dictators. However, we must also remember which men attempted to thwart this new-age stereotype of evil mustache bearers. Mahatma Gandhi, Albert Einstein and Martin Luther King Jr. among others were brave world-changing men who wore their mustaches handsomely and with dignity. They were not overcome by the opinions of crowds that were displeased with their inability to create such pieces of natural artwork. These men were dedicated instead to investing in their life mission and rocking a sweet stache while they went about changing the world.

What does the mustache say about a person? Well if you are one who generalizes folks, then you might say words like "hipster," "poser," "want-

to-be" or incorrectly "wanna be." On the other hand, a thoughtful person might think words like "well-kept," "dapper," "this gentleman is trying to make an impression and since he caught my attention I'd say he is doing a fine job. Maybe I should start a pleasant conversation with him." This would be far more appropriate and much more pleasant for both you, seeing as how you get a good conversation.

Now, go out there and grow some facial hair.

While you're at it, if you are feeling brave, interested in an age old morning tradition of keeping your face looking sharp and determined to look and feel like a dapper gentlemen, I encourage you to grow yourself a real man's mustache.

Remember, the first step is let it grow.



Ben Crone, trek advisor.

Christine Henri/Photographer

Scott Allen
Staff Writer

The beard shines thick on the face tonight
My looks are increased
A kingdom of furriness,
And it looks like I'm the beast.

The hair is growing like a twisting vine outside
Couldn't keep it in, Zeus knows I tried!

Don't let them cut, don't let them shave
Be the strong man you must behave
Conceal, don't feel, don't let them mow
Well, now we can show!

Let it grow, let it grow
Wouldn't trim it if you paid
Let it grow, let it grow
Turn away and drop the blade!

I don't care
What they're going to say
Let the beard rage on,
The itch never bothered me anyway!

It's funny how some whiskers
Makes everything seem smooth
And the face that once

controlled me
Is now powering my groove!

It's time to see what I can grow
To test the limits and let it show
No right, no wrong, no rules for me I'm free!

Let it grow, let it grow
I am one with the hair and men
Let it grow, let it grow
You'll never see me trim!

Here I stand
And here I'll stay
Let the beard rage on!

My stubble flurries through the bones into the cheeks
My hair is thickening into dark patchy boutiques
And one thought scratches like a new grow
I'm never going back,
The past will never show!

Let it grow, let it grow
And I'll never shave again
Let it grow, let it grow
Time to show off my mane!

Here I grow
In the thick of day
Let the beard rage on,
The itch never bothered me anyway!

Attention: If you are interested in being featured in the next "Wanted: Whiskers" please stop by the PhilNews office in the News and Photo Services Building

Take out or eat in on our shaded patio

the Porch

market & deli

636 East Ninth Street

376-2228

theporch@qwestoffice.net

Good Food in Cimarron

Fast, Fresh, Friendly

Healthful Homemade Soups, Salads, Sandwiches, Bakery, Smoothies, More

Sunday Brunch

Fresh Produce Market

Monday-Saturday 10:00-2:00

Sunday Brunch 10:00-2:00

Find us on Facebook

Free WiFi access

Call us about catering

Visit our website

Ask the Participants

Emet Blood
Staff Writer



Morgan Court/Photographer

Matthew Warrick, 14

"It was amazing. It was so much fun to come out here and hike through Philmont."

"My favorite staff camp was Miranda. We had an awesome time at evening program, mountain ball and then broga was a really good time."

"I've seen what my limits are and I was pushed past those and I saw how capable I am of going further than I imagined."



Morgan Court/Photographer

Mason Shaver, 17

"I was worried at first, but after the third day we all just clicked and hiking through the beauty of Philmont was just really nice."

"I was the crew leader, and the experience really let me hone in on my skills. I had to go above and beyond what I was used to and I appreciate the experience."



Morgan Court/Photographer

Connor Yarbrough, 14

"It was a fantastic experience, we hiked over 100 miles and I got to spend time with my friends in nature."

"My favorite staff camp is Rich Cabins: great staff and a fun program."

"We grew as a crew on this trek, because we learned how to be dependable for one another."



Morgan Court/Photographer

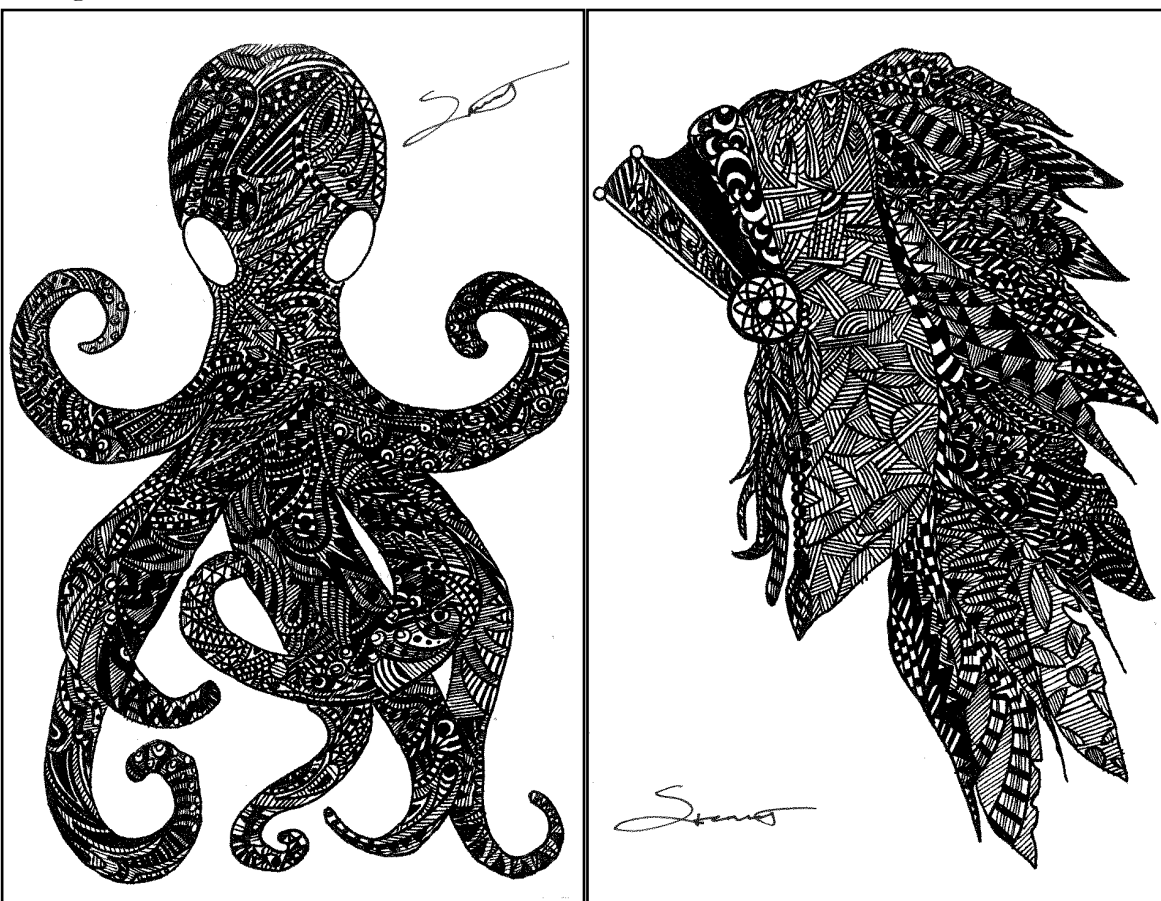
Drew Samford, 17

"I loved the experience. It was a lot of fun. This is a trip I'll remember forever. The experience taught me a lot about myself and how I interact with people."

"Because we lived together as a crew, we learned to work together efficiently and that was an awesome part of the trek."

Camp Artwork

Zac Stewart
Dining Hall Staff



CHACO PRODEAL

Thanks to the American Camping Association, all Philmont staff members are eligible to purchase Chaco products at a discount price.

Simply go to Chacos.com/ACA and fill out an online application. Once your membership has been approved, you will be able to enjoy a discount of 40% off MSRP on the items available on Chaco's online store.

Ice Cream Treats

202 N Commercial
Trinidad, CO
719 845 8508



Open daily
from noon
to 8 p.m.

Tutti Scoops

PHILMONT MUSEUMS

Philmont Museum - Seton Memorial Library

Exhibits include Partners on the Ponil, Philturn Rockymountain Scoutcamp and Selected Works of E.T. Seton. The Seton Memorial Library houses the personal library and artwork of Ernest Thompson Seton. Native American jewelry, art, collectibles and one of the largest book selections in the county can be found in the Museum Gift Shop. **Open Daily 8—5:30**

The Kit Carson Museum at Rayado

Open Daily 8—5, June—August

Chase Ranch

Call for tour information.



Villa Philmonte - Reservations Required

* **Tours Daily. Every half hour beginning at 8a.m. Call for reservations.**

For more information and to schedule a Villa or Chase Ranch House tour, please stop by the Philmont Museum or call 875-376-1136. * Reservations are required.

Chaplain's Corner

Meet the Chaplains

Fr. Raymond L. Fecteau Catholic Chaplain

In the summer of 1969, the Daniel Webster Council hired me as a provisional Scoutmaster at Camp Carpenter, N.H. I returned in the same staff position each summer until my ordination as a Roman Catholic priest for the Archdiocese of Washington, D.C., in 1972.

I currently serve as the founding pastor of Our Lady of the Visitation Parish (1991) and of Mary of Nazareth Regional Catholic School (1994) in Darnestown, Maryland, a suburb of D.C.

In 1981, I earned my doctorate from The School of Religious Studies at the Catholic University of America in Washington, DC.

I also have served since 1985 as a volunteer police chaplain for city, county, state and federal law enforcement agencies in the D.C. area.

I was assigned to a 9/11 recovery team with the Port

Authority Police Department, and I was appointed chaplain to the Joint Operations Command during the D.C. sniper crisis in 2002.

I am registered currently as a volunteer with the National Council as a Member-at-Large on the Religious Task Force. I have held several leadership positions on the District, Council and Regional levels: Membership chair, camp chaplain, and regional camp inspector.

I was an adult advisor on two high adventure crews on the Lenhok'sin Trail at National Capital Area Council (NCAC) Goshen Scout Camps in Virginia.

I am the founding Charter Executive of Venture Crew 2003. I have received the District Award of Merit and the Silver Beaver. I am a Vigil Honor Member of the Order of the Arrow.

In 1977, I came to Philmont for the first time as a course participant in "Scouting in the Catholic Church" at PTC. I returned to serve as the course instructor in 1986, course director

in 1988, and course advisor in 2004, 2005 and 2010. I have been Philmont Scout chaplain every summer since 2004.

I served for several years as the Boy Scout chaplain of my Archdiocese.

I was a Scout chaplain at Goshen Scout Camps (NCAC) from 1980 - 1987.

I have been a member of the Executive Board of the National Catholic Committee on Scouting (NCCS) since 1983, and I have received the St. George and the Silver St. George Religious Emblems.

I was on the 2005 Jamboree staff as a Scout chaplain at HQ. I was the national chaplain for the NCCS from 2007 - 2010, and

I presently hold the position of advisor to the NCCS Advisory Board.

In October of 2012, I represented the United States and North America at the International Catholic Committee on Scouting Ecumenical Conference in Assisi, Italy.

Fr. Raymond L. Fecteau Catholic Chaplain

As a Catholic, I am not unfamiliar with guilt. Josef Stalin claimed that the bad are manipulated by force, and that the good are manipulated by guilt. As do others in Scouting, I take seriously the Scout oath and the Scout law. As a Scoutmaster, a crew advisor and a chaplain, I know that feeling of regret for my thoughts, words, actions or for my failure to act. When I let down those entrusted to my care by God here at Philmont, it makes sense that I feel so bad.

Dining Hall and chuck wagon cooks like to hear good comments about the food they have prepared. To compliment a creation is to compliment the creator. All those "wow" moments at Philmont are, in fact, our own personal prayers of praise: a crimson sunrise, a starry night or a field of sunflowers. Maybe we staff members pray more often at Philmont than we realize.

Abraham Lincoln once said: "I pray best on my knees. Maybe that is why God brings me there

so often." I know there have been times in my life that I fell to my knees in prayer. Sometimes it was to say: "Please, O God!" Other times it was to say: "Thank you, God!" I suspect that is why so many crews at Philmont attend one of the 7 pm services at Base Camp before they hike out, and, again, when they return.

Sometimes I want to pray while at Philmont, but I am too tired, or too troubled, or just at a loss for words. At those times, I find the "Book of Psalms" most helpful. The "Book of Psalms" is made up of 150 prayers; it is found in the sacred writings of Jews, Christians, and Muslims. Print materials containing the "Book of Psalms" are available in the Chaplain boxes in the Backcountry and from the Chaplains at Base Camp. (When I hear the "Philmont Hymn", I like to think of it as Psalm 151.)

Psalms are prayers for every occasion. There are psalms asking God for help; there are also psalms giving thanks to God. There are several psalms acknowledging guilt, and several asking for mercy and forgiveness. There are psalms of woe and psalms of "wow."

Backcountry Trail Camps: Part one

Dallas Elmore Staff Writer

Philmont's trail camps are a highlight of many people's experience at Philmont. Having a backcountry campsite to yourself and escaping the world is an energizing and enlightening moment.

PhilNews spoke to an expert panel of rangers with a combined total of 19 summers of experience in the backcountry.

The following trail camps are an escape into solitude and are a great break from base camp or a busy staff program. Eric Martinez, chief ranger, has one thing he prefers in a campsite.

"The best trail camps are the ones you have to get to on purpose," said Martinez.

Aspen Springs- Located between Cimarroncito and Ute Gulch Commissary, this trail camp is only a hour and half hike from Cito Turnaround. The camp has purified water, so campers can forget about lugging water for dinner. In addition to the boulders that run through the camp, hikers can easily get to either Hidden Valley or Grouse Canyon, two of the prettiest hikes on the Ranch. A short 15 minute hike leads to Window Rock, which offers a spectacular vista of the back side of the Tooth and Western prairie.

Mt. Phillips- The highest trail camp on Philmont property, this camp is a two minute walk from the summit of Mt. Phillips. Although the trail from Clear Creek is generally considered more

difficult, the trail from Thunder Ridge leading to the peak can be laborious with a full pack. The camp is dry, but the spectacular views of Angel Fire make the journey well worth it. Staffers should be aware that participant crews make regular use of the camp, so it lacks some of the solitude other camps offer.

Black Horse- This camp services the Baldy Mountain area. About an hour hike from either Baldy Town or Miranda, the trail passes the remains of the mining camps that dotted the mountain. A stream water source saves hikers from having to pack water up Baldy Mountain, and views of the Tooth and Touch Me Not are available. Few crews use the camp, so solitude is assured at one of the five campsites.

Lookout Meadow- Staffers looking for spectacular views without losing the beauty of a mountain meadow will have solid hike to get to Lookout Meadow. Among the most isolated trail camps on the Ranch, the setting is well worth it. With views of Crater, Lookout, Rayado Peak and another vista north from the top of Finger Meadow above the camp, the site is truly nestled among mountains. Although water is available, the reservoir is stagnant and staffers should consider bringing other sources.

Comanche Peak Camp- This trail camp is a rest stop for many crews on their way to summit Mt. Phillips, but the camp is relatively quiet at night. The views from a



Kyle Nutter/Staff Writer

A campsite at Aspen Springs, near Hidden Valley.

natural amphitheater just East of the camp are impressive and well worth the long hike. Water is available but is located at least three-quarters of a mile away.

US/Canada News

US disease labs ‘made dangerous pathogen transport errors’

BBC

US government infectious disease labs mishandled dangerous pathogens five times in the last decade, according to a health agency report.

This year alone, workers mishandled samples of anthrax and the highly-infectious H5N1 avian flu.

In response, the Centers for Disease Control and Prevention (CDC) has closed the two labs involved.

The agency has also temporarily barred high-security labs from transporting dangerous pathogens.

There have been no reported infections from previous cases, and no-one potentially exposed to anthrax has shown signs of illness, CDC officials said.

Acclaimed US classical conductor Lorin Maazel dies

BBC

Lorin Maazel, widely seen as one of the greatest modern conductors of classical music, has died in the US, aged 84.

The American occupied top positions at the Vienna State Opera and the New York Philharmonic, which he accompanied on a 2008 tour of isolated North Korea.

In 2009, he and his wife founded the Castleton Festival, which aims to showcase classical musicians at the start of their careers.

Maazel was admired for the precision and rigour of his conducting.

According to a 2011 profile in The Guardian newspaper, he had a powerful memory and became known for performing without a score.

“In fact the hardest part is trying to forget music when I’m not conducting it,” the newspaper quotes him as saying.

US sends military draft notices to men born in the 1800s

BBC

The agency that manages the dormant US military draft has apologised after sending conscription registration notices to men born in the late 1800s.

The Selective Service System (SSS) said the error occurred after a clerk neglected to select the century in a search for newly eligible young men.

It sent 14,250 notices to Pennsylvania men born 1893-97 in addition to 1993-97 before discovering the error.

The men are all almost certainly dead, as the youngest would be 117.

Male US citizens must register for the draft shortly after their 18th birthdays and all male immigrants between ages 18-25 must register.

But the draft has not been in effect since the Vietnam War, and the US military is now an entirely volunteer force.

HIV re-emerges in ‘cured’ Mississippi girl

BBC

A baby girl in the US born with HIV and believed cured after very early treatment has now been found to still harbour the virus.

Tests last week on the four-year-old child from Mississippi indicate she is no longer in remission, say doctors.

She had appeared free of HIV as recently as March, without receiving treatment for nearly two years.

The news represents a setback for hopes that very early treatment of drugs may reverse permanent infection.

Dr. Anthony Fauci, director of the National Institute of Allergy and Infectious Diseases, told US media the new results were “obviously disappointing” and had possible implications on an upcoming federal HIV study.

China national charged in hacking plot to steal US military data

BBC

US authorities have charged a Chinese businessman with hacking into the computer systems of Boeing and other firms with large defence contracts.

Su Bin, who was arrested in Canada last month, is accused of working with two other suspects to steal data about military projects and sell it to China.

Prosecutors said Mr. Su was targeting information about fighter jets, military cargo aircraft and weapons.

A 2013 US report identified industrial spying from China as a growing threat.

There has been no specific allegation of involvement by the Chinese government in Mr. Su’s case, but the US has accused China of systematically stealing American high-tech data for its nation.

World News

Thousands flee northern Gaza after Israeli warnings

BBC

Thousands of Palestinians are fleeing northern parts of Gaza after Israel warned it was targeting the area in its campaign to stop rocket attacks.

The UN says 4,000 people have already sought refuge in shelters as Israeli air strikes continue for a sixth day.

Israeli forces have raided a suspected rocket-launching site in Gaza in their first reported ground incursion.

At least 159 Palestinians have been killed since Israel’s offensive began, according to health officials in Gaza. The dead are said to include 17 members of one family who died in an Israeli missile strike on Saturday evening.

Israel says it is targeting Hamas militants and “terror sites”, including the homes of senior operatives. However, the United Nations has estimated that 77% of the people killed in Gaza have been civilians.

Iraq: Gunmen kill ‘at least 29’ in attack in Baghdad

BBC

Gunmen have stormed two buildings in the Iraqi capital, killing at least 29 people, officials say. At least 20 of those killed were said to be women.

The attack took place late on Saturday in the neighbourhood of Zayouna in east Baghdad, police said. One officer said he “found bodies everywhere”.

The motive for the killings is not clear. No group has said it carried out the attack.

Reports said the two buildings were suspected to be brothels.

Writing left on the door of one of the buildings read: “This is the fate of any prostitution,” AFP news agency reports.

Locals in Zayouna have accused Shia militias of killing women thought to be prostitutes, Reuters news agency reported. The neighbourhood is a mixed district of Sunni and Shia Muslims.

Ukraine conflict: Fighting flares near city of Luhansk

BBC

Fighting has flared outside the rebel-held east Ukrainian city of Luhansk, with rebels saying government forces tried to storm the city with tanks.

Rebel military leader Igor Strelkov was quoted as saying his forces had beaten off columns of government armour attacking from the south and west.

Pro-Ukrainian sources in the city of 425,000 people reported skirmishes in villages to the south and west.

Germany and Russia have urged direct talks between Kiev and the rebels.

Meeting briefly in Rio de Janeiro before the World Cup final, German Chancellor Angela Merkel and Russian President Vladimir Putin called for the talks to be held by video link, Mrs. Merkel’s office said in a statement (in German).

Afghan presidential candidates agree vote audit

BBC

Afghanistan’s two presidential election candidates have agreed to an audit in an attempt to resolve a dispute over the result of last month’s vote, US Secretary of State John Kerry has said.

Both contenders, Abdullah Abdullah and Ashraf Ghani, have agreed to abide by the result.

The review of all 8m ballots would begin within 24 hours, Mr Kerry said.

Preliminary results suggest Mr. Ghani has won, but both candidate accuse the other of electoral fraud.

Results announced by Afghanistan’s election officials give Mr. Ghani 56.44% of votes in the 14 June run-off, with Mr Abdullah gaining 43.45%.

Libyan rival militias clash near Tripoli airport

BBC

At least seven people have been killed and 30 hurt in clashes between rival militias at Libya’s airport near the capital, Tripoli, officials say.

Rebels from the Zintan region who control the international airport have been attacked by a rival group trying to take over the area.

Flights have been suspended amid reports of heavy shelling and gunfire.

Libyan leaders have struggled to bring stability to the country since Muammar Gaddafi was removed from power in 2011.

Although some of the rival militias who attacked airport road are known as Islamists - this is not a clear-cut battle of ideologies. At the heart of this fighting is a turf war between militias that has been brewing in the capital for a long time.

Entertainment

Tommy Ramone: Blondie and Chili Peppers lead tributes

BBC

Blondie, Guns N’ Roses and the Red Hot Chili Peppers have paid tribute to Tommy Ramone of seminal US punk band The Ramones, who died on Friday.

“He was a lovely, gentle guy,” said Chris Stein, guitarist in Blondie, who played alongside The Ramones in seminal 1970s New York punk venue CBGBs.

“So, so sad to hear about Tommy,” added the band’s drummer, who occasionally played with The Ramones in the 1980s.

“We lost one of the greats,” tweeted Chili Peppers’ drummer Chad Smith.

Former Guns N’ Roses’ stars Slash and Duff McCagan simply tweeted “RIP”.

Other tributes came from Motorhead, Billy Bragg and Garbage.

Comedian Tracy Morgan released from hospital

BBC

Former 30 Rock star Tracy Morgan has been released from hospital, five weeks after being seriously injured in a car crash that left a fellow comedian dead.

The comedian will continue his recovery at home with an “aggressive outpatient program,” said spokesman Lewis Kay.

“He asked me to pass along his sincerest gratitude to everyone who has helped him get to this point.”

Morgan’s legs, nose and ribs were broken on 7 June when a Walmart truck crashed into his vehicle in New York.

The wreck killed comedian James McNair, who went by the stage name Jimmy Mack.

Morgan’s assistant, Jeffrey Millea and comedian Ardie Fuqua Jr. were also injured in the crash.

Football commentator Brian Taylor apologises for gay slur

BBC

Australian rules football pundit Brian Taylor has apologised after using a homophobic insult to describe a player who gave a “royal wave” to the crowd.

His remarks came as defender Harry Taylor was hoisted onto his teammates shoulders to mark his 150th game.

“I’ve just seen that crap from Harry. He’s a big poofter,” said the commentator.

“Next thing you’ll have your mum and dad out there.”

TV network Channel Seven said he would be given “education and counselling”.

There was swift condemnation of Taylor’s comments online, and he apologised during a subsequent broadcast on Saturday night.

“In the pre-game show I said something that I regret,” he told viewers.

“I sincerely apologise ... to Harry Taylor and anyone - particularly Harry and any of his friends - that were offended by my remark,” he said.

Harry Potter actor Dave Legeno dead in Death Valley

BBC

A British actor who appeared in the Harry Potter film series has been found dead in a remote part of California’s Death Valley, authorities say.

Mixed martial arts fighter Dave Legeno, 50, was found by hikers on Sunday and his body was recovered by helicopter.

There were no signs of foul play and it is believed he died from the heat, an initial coroner’s examination found.

He appeared as werewolf Fenrir Greyback in three Harry Potter movies, including both Deathly Hallows films.

“It appears that Legeno died of heat-related issues, but the Inyo County coroner will determine the final cause of death,” the Inyo County Sheriff’s Office wrote in a statement.

Children’s TV ‘in long-term decline’ says Teletubbies creator

BBC

Home-grown children’s television programming is now in long term decline according to the creator of the Teletubbies, Anne Wood.

Speaking to BBC Radio 4’s World This Weekend, Wood said the industry had been “struggling for many, many years”.

Despite many more channels, “the number of people who commission in a serious way have disappeared”, she added.

Earlier this month, the head of TV regulator Ofcom said children’s TV is “not as good as it would ideally be”.

Jo Killingley - who created the shows Big Cook, Little Cook and Get Squiggling! - agrees the market has become tougher.

“I think in the past channels like Channel 4, Channel 5, ITV had quotas they had to meet,” she said. “Now they have gone.

Sports

Lebron James signs 2-year contract

AP

First, the Cavaliers got LeBron James’ word. Then they got his signature.

James signed a two-year, \$42.1 million contract with the Cavs on Saturday, a day after he announced he was returning to play in Cleveland and try to end the city’s 50-year championship drought.

The deal provides flexibility for the NBA’s biggest star with the league’s maximum salary expected to rise in the future.

American League

AL East	W	L	GB
Baltimore	52	42	-
Toronto	49	47	4
NY Yankees	47	47	5
Tampa Bay	44	53	9.5
Boston	43	52	9.5
AL Central			
Detroit	53	38	-
Kansas City	48	46	6.5
Cleveland	47	47	7.5
Chicago Sox	45	51	10.5
Minnesota	4	50	10.5
AL West			
Oakland	59	36	-
LA Angels	57	37	1.5
Seattle	51	44	8
Texas	40	56	19.5
Houston	38	57	21

National League

East	W	L	GB
Washington	51	42	-
Atlanta	52	43	-
NY Mets	45	50	7
Miami	44	50	7.5
Philadelphia	42	53	10
Central			
Milwaukee	53	43	-
St. Louis	52	44	1
Cincinnati	51	44	1.5
Pittsburgh	49	46	3.5
Chicago Cubs	40	54	12
West			
LA Dodgers	54	43	-
San Francisco	52	43	1
San Diego	41	54	12
Arizona	40	55	13
Colorado	40	56	13.5

Glasgow 2014: England’s Morgan Lake pulls out of heptathlon

BBC

Teenage heptathlete Morgan Lake has pulled out of England’s

Commonwealth Games team to concentrate on the World Junior Championships.

The 17-year-old had been selected to compete in the Glasgow event, which takes place on 29 and 30 July.

World Cup Results

Sunday, July 13 (final)
Germany/Argentina: 1/0

Saturday, July 12 (3rd/4th play-offs)

Brazil/Netherlands: 0/3

Wednesday, July 9 (semi-final)
Netherlands/Argentina: 0/0
Argentina win 4-2 on penalties

Tuesday, July 8
Brazil/Germany: 1/7

Saturday, July 5
Argentina/Belgium: 1/0
Netherlands/Costa Rica: 4/3

Technology

Yo app warns Israeli citizens of missile strikes

BBC

Israeli missile notification service Red Alert has teamed up with the unlikely hit app Yo to warn of incoming strikes - leaving many in the local tech scene more bemused than impressed.

Yo users who follow RedAlertIsrael within the app receive an alert whenever spotted attacks are inbound.

Red Alert provides real-time warnings of mortars or missiles fired into Israel by Palestinian militants.

Some experts remain sceptical about the usefulness of Yo.

The app - developed by a San Francisco-based Israeli - sends the word “Yo” as a text and audio notification to friends, but nothing else.

Since launching in April it has been downloaded about two million times across the globe.

Eagle shot wins drone photography competition

BBC

The arrival of cheap drone technology - and small, light high-quality cameras - has given rise to a new genre of beautiful aerial photography and film-making.

A new competition, sponsored by National Geographic, has highlighted some stunning examples of drone photographs taken in the past year.

The winner of the competition was a stunning view of an eagle soaring high above a national park in Indonesia.

More photographs can be seen on Dronestagram, a site dedicated to the images taken in mid-air.

The site’s founder Eric Dupin told the BBC drone photography quite literally offers a whole new perspective.

“It depicts a new vision of the world, with stunning images taken from low altitude, near field,” he said.

Moshi Monsters boss Michael Acton Smith steps down

BBC

The boss of Mind Candy, the company known for children’s social network Moshi Monsters, is to step down.

Michael Acton Smith, who has run the business for 10 years, said he wanted to focus on a “more creative role” rather than the day-to-day running of the firm.

Divinia Knowles, currently chief operating and financial officer, will become president.

A new chief executive will be announced at a later date, the company said.

Moshi Monsters is one of the world’s most popular children’s social networks, with around 80 million users.

The service operates through paid subscriptions. But it is associated merchandise - plush toys, music albums and other spin-offs - that generate around half of Mind Candy’s revenue.

App parking system shuts down in San Francisco

BBC

A service that lets people buy and sell public parking spaces in San Francisco is suspending operations in the city.

Rome-based MonkeyParking lets people auction a space they are about to vacate via a smartphone app.

The company faced criticism from San Francisco city authorities who threatened to fine MonkeyParking and its users.

Initially defiant, the company has “disabled” the service while it clarifies how it can operate.

San Francisco banned the use of the MonkeyParking app in late June declaring that it would not allow the creation of a “predatory private market for public parking spaces.”

Cynk Technology shares suspended after surging 23,000%

BBC

The US Securities and Exchange Commission (SEC) has suspended trading in Cynk Technology after shares in the little-known social networking firm surged more than 23,000% in the past month.

Documents showed the firm - which is registered in Nevada with an office in Belize City, Belize - had no revenue and one employee.

Shares in Cynk were traded in a lightly regulated “over the counter” exchange.

The SEC halted trading until 24 July.

“It appears to the SEC that the public interest and the protection of investors require a suspension of trading in the securities of Cynk Technology Corp (“Cynk”) because of concerns regarding the accuracy and adequacy of information in the marketplace and potentially manipulative transactions in Cynk’s common stock,” wrote the SEC in its order suspending trading in the firm.

Health

First dengue vaccine ‘shows promise’

BBC

Scientists say they have developed the world’s first vaccine against dengue fever seen to work in large-scale trials.

Research in the Lancet journal suggests more than 50% of children who are given the vaccine are protected against the disease.

Half the world’s population are at risk of catching the mosquito-borne virus.

Experts say though the long-awaited study is promising, vaccines with greater effectiveness are crucial.

There are currently no treatments to prevent dengue fever - an illness which affects more than one million people a year.

In the largest late-stage trial of a vaccine to date, researchers from five centres across Asia treated 6,000 children aged between two and 14 years old.

Ebola outbreak: 25 more deaths confirmed in West Africa

BBC

Health officials in West Africa say 25 more people have died from Ebola since 3 July, taking the total number of deaths to 518.

The World Health Organization (WHO) said 50 new cases of the deadly disease had also been reported.

A WHO spokesman said health workers were struggling to contain the outbreak in Sierra Leone, Liberia and Guinea.

Ghana’s health ministry has confirmed that tests on a US citizen showed he did not have the disease.

The man had recently visited Sierra Leone and Guinea and was quarantined after showing signs of the virus.

In a statement on Tuesday, the WHO said the latest figures from health ministries in Sierra Leone, Liberia and Guinea showed a total of 844 cases since the epidemic began in February.

Assisted dying: Desmond Tutu signals support

BBC

Desmond Tutu has said he would support assisted dying for the terminally ill.

Writing in The Observer he said he reveres “the sanctity of life but not at any cost”.

He also suggested that prolonging the life of Nelson Mandela had been an “affront” to his dignity.

His comments follow a U-turn by former Archbishop of Canterbury Lord Carey, who also said he would support assisted dying for the terminally ill.

The Church of England (CofE) has called for an inquiry into the issue.

In his column the 82-year-old retired Anglican Archbishop of South Africa said: “I think when you need machines to help you breathe, then you have to ask questions about the quality of life being experienced and about the way money is being spent.”

Synthetic cannabis ‘not medicinal’, EU top court says

BBC

The EU’s top court says designer drugs that mimic cannabis, which are already illegal in many countries, cannot be classed as medicinal.

If a drug is not “medicinal” then it can be sold until it is blacklisted.

Many new synthetic “legal highs” have appeared in recent years, making it hard for authorities to control them. Internet drug sales have boomed.

The case arose because two German vendors of such drugs were convicted for selling unsafe medicinal products.

One was jailed for four and a half years, the other given a suspended sentence. They could not have been prosecuted under anti-narcotics laws because at that time synthetic cannabinoids were not illegal.

TB rates in children ‘much higher than WHO estimates’

BBC

More than 650,000 children worldwide develop tuberculosis each year, research in the journal Lancet Global Health suggests.

The figure stands almost 25% higher than current predictions made by the World Health Organization.

Scientists say health officials may be missing an “enormous opportunity” to prevent the disease from spreading.

The World Health Organization plans to revise its estimates in its next report.

Tuberculosis (TB) in children can be difficult to detect - younger people harbour fewer bacteria than adults and it is more challenging to collect samples from them.

The World Health Organization put together the first international estimates in children in 2012, predicting some 530,000 cases that year.

Environment/Science

Scotland could be base for spaceport, says UK government

BBC

Scotland could host the UK's first dedicated base for spaceplanes, according to new government plans.

Ministers want to establish the UK spaceport by 2018 - the first of its kind outside of the US.

Eight aerodromes have been shortlisted and Scotland has six of the potential locations.

The Scottish government said only independence would lead to a greater development of the country's space industry.

For ministers and the space industry, the major interest in a UK spaceport is as a facility to enable satellite launches, but hopefully it would also become a centre for the new tourism initiatives from specialist operators such as Virgin Galactic and XCor.

China 'admits' trading in tiger skins

BBC

China has for the first time admitted in public that it permits trade in skins from captive tigers, according to participants and officials at a meeting of an international convention to protect endangered species.

They said the Chinese authorities had never before reported this to the Convention on International Trade in Endangered Species of Wild Fauna and Flora (Cites).

However, during the convention's standing committee meeting in Geneva, China reportedly said that it still banned tiger bones.

"A Chinese delegate said, 'we don't ban trade in tiger skins but we do ban trade in tiger bones,'" a participant in the meeting said.

Cites secretariat sources confirmed that a member of the Chinese delegation had said this.

Flexible nano-pixel screen patented

BBC

Scientists have patented a new way to make ultra high-res displays that can bend and are thousandths of a mm thick.

They used a miniscule layer of a phase-change material, that flips between two chemical states when hit with current.

By sandwiching it between transparent electrodes, they made pixels just 300 nanometres across and produced images smaller than the width of human hair.

The design, published in Nature, could be useful in wearable technology, smart contact lenses or foldable screens.

According to Prof Harish Bhaskaran, who led the research at Oxford University, it will be "at least five years" before any applications appear.

Study sparks organic foods debate

BBC

A new scientific review claims organic foods are higher in nutrients and lower in pesticides compared with conventionally grown varieties.

Its authors carried out an analysis of 343 peer-reviewed studies looking at the composition of crops and foods.

They concluded organic crops had higher levels of certain antioxidants, such as polyphenols, which have been linked to health benefits.

But critics of the review said its claims had been overstated.

They argued the differences found between organic and non-organic crops were not significant, and that public health would be best served by getting people to eat more fruit and veg, irrespective of the farming methods used in the crops' production.

UK admits that air quality targets will be missed by 20 years

BBC

The air quality in some of the UK's biggest cities is unlikely to meet EU standards before 2030, according to the government.

Member states were supposed to meet targets on pollutants from diesel cars and trucks by 2010.

The nitrogen dioxide (NO2) they produce is linked to a range of respiratory ailments.

But the European Court of Justice heard that London, Leeds and Birmingham could still be above these goals in 2030.

The court has been hearing evidence in a civil case brought by air quality activist group Client Earth. It has already been successful in the UK Supreme Court, winning a judgement that the government was breaching its legal duty on NO2.

Business

Vince Cable: UK to remove takeover 'wiggle room'

BBC

Business Secretary Vince Cable has said he will tighten the rules to deal with foreign takeovers of UK firms.

He wants any new regime overseeing takeovers to also include possible fines for firms which renege on promises made during the deal.

He told the BBC that any commitments must have no "wiggle room".

He said legal changes would probably be needed to enforce such commitments, but that there was agreement across government for such measures.

After his comments, Labour's shadow business secretary Chuka Umunna said his offer to work with Mr Cable on the issues "remains open."

Tighter laws to strengthen the "national interest test" could also be in the pipeline, after concerns about the acquisition of major UK firms.

Iraq conflict: Kurds seize two oilfields in north

BBC

Iraqi Kurds have taken over two northern oilfields amid a growing dispute with the government in Baghdad.

Kurdish peshmerga forces are said to have seized control of production facilities at Bai Hassan and Kirkuk.

Kurdish MPs withdrew from Iraq's central government, after Prime Minister Nouri Maliki accused the Kurds of harbouring extremists.

Iraqi Foreign Minister Hoshyar Zebari - a senior Kurdish figure - said Mr Maliki should apologise for his remark.

If the prime minister did not withdraw his comments, the Kurds would find it extremely difficult to work with him, Mr Zebari told the BBC.

Pizza Express sold to Chinese firm Hony Capital for £900m

BBC

The restaurant chain Pizza Express has been sold to a Chinese firm for around £900m, following "considerable interest" in the business.

The UK Gondola Group confirmed the sale to private equity firm Hony Capital.

There are 436 Pizza Express restaurants in the UK along with 68 internationally - including 22 in China - employing more than 9,000 workers.

Chief executive Richard Hodgson said expansion in Asia was a "key part" of future growth strategy.

The sale was a "very positive development at an exciting time for the business", he said.

Pizza Express already has 12 restaurants in Hong Kong and nine in Shanghai, as well as outlets in India, Saudi Arabia and Bali.

Wells Fargo profits rise as US economy improves

BBC

Profits at Wells Fargo rose 3% in the second quarter, as the US's largest bank benefitted from a pick-up in the US economy.

The bank - which is responsible for one out of six US home loans - reported a quarterly profit of \$5.7bn (£3.3bn).

It also said it lent \$47bn in mortgages during the period from March to June, up from \$36bn in the first quarter.

Wells Fargo's results are closely watched, as they are seen as a bellwether for the US housing market.

The bank's chief executive John Stumpf said the results reflected "strong credit quality driven by an improved economy".

Despite the profits boost, shares in Wells Fargo were down by over 1%, as investors fretted over declining revenue, which slipped 1.5% to \$21.07bn.

Amazon sued by US regulators over child in-app purchases

BBC

The US Federal Trade Commission (FTC) has sued Amazon, alleging it allowed millions of dollars of unauthorised purchases by children in its mobile app store.

The FTC is seeking refunds for parents who were charged.

Amazon resisted a settlement offer from the FTC, and wrote in a letter to the regulator earlier this month that it would not accept tighter controls.

In January, Apple settled with the FTC over similar charges.

"Amazon's in-app system allowed children to incur unlimited charges on their parents' accounts without permission," said FTC chair Edith Ramirez in a statement.

"Even Amazon's own employees recognized the serious problem its process created," she added.

Elements

C	Y	P	R	X	W	N	B	Q	J	T	Z	Q	M	G	O	G	U	M	U	B	S	R	Z	R
L	A	V	N	Z	I	E	C	O	L	C	R	U	C	I	I	S	F	U	U	O	D	A	X	E
Z	N	H	A	C	F	G	G	A	U	Z	I	X	T	U	Q	F	J	I	O	I	V	E	N	V
Z	P	O	K	N	E	G	Y	X	O	D	L	Q	C	C	Q	H	D	R	Q	F	N	L	T	L
V	Y	E	R	K	T	N	S	D	O	M	U	I	C	L	A	C	A	A	M	O	M	A	O	I
T	L	T	M	I	O	E	T	S	K	C	H	L	O	R	I	N	E	B	N	D	S	X	R	S
A	U	E	I	B	Y	A	Y	X	G	E	P	F	E	M	V	G	L	W	Z	V	S	I	L	U
X	M	N	R	A	R	G	O	N	N	Z	H	Q	R	I	N	K	D	U	T	X	D	O	P	E
F	C	A	G	R	S	T	B	O	Z	R	R	F	Z	P	I	F	J	Q	C	J	N	D	L	V
W	C	O	E	S	D	D	E	I	W	D	I	L	A	U	T	I	Y	D	R	A	T	I	H	O
O	Z	W	P	L	T	N	C	E	F	U	Y	E	R	Z	P	M	V	I	W	C	C	N	G	F
B	J	K	B	P	O	E	Y	R	Q	G	Z	H	S	L	U	P	A	C	V	Z	U	E	C	Y
G	G	F	I	C	E	D	N	V	E	W	A	P	E	S	B	M	N	G	Q	E	C	R	D	N
T	A	O	I	O	I	R	S	W	F	W	W	E	N	E	N	O	N	E	J	P	F	A	N	M
O	M	Z	D	P	J	W	J	K	M	B	H	G	I	K	A	L	D	L	O	G	Z	Z	E	G
U	W	W	P	V	X	K	I	W	H	I	Q	B	C	O	B	A	M	A	T	X	H	L	G	L
P	U	C	O	B	A	L	T	O	O	I	P	I	B	N	C	T	I	S	C	M	Y	N	U	F
V	Y	S	B	J	E	N	B	M	D	I	F	G	J	Z	I	Z	M	H	F	X	M	D	U	A
T	U	Q	H	Z	O	L	U	O	V	C	U	H	E	C	P	S	B	U	K	B	C	H	O	U
T	Y	P	M	H	V	Y	Z	K	R	Q	Z	P	Q	B	R	B	B	V	I	A	M	M	N	M
R	R	A	D	U	L	H	L	N	M	O	W	D	P	C	Y	L	C	N	D	D	R	B	Z	Z
M	O	V	W	R	L	V	Z	I	N	C	N	B	Y	S	F	Q	G	M	P	I	A	H	J	E
X	V	L	L	E	G	X	F	O	B	U	T	M	U	E	F	N	I	R	U	R	D	R	O	U
B	D	M	G	H	C	A	Q	B	Z	V	Z	B	G	S	P	U	V	J	H	K	O	F	G	U
K	P	Z	G	P	T	N	P	U	U	B	L	Y	E	H	M	W	V	L	Z	K	N	O	T	C

Argon	Calcium	Gold	Nickel	Sodium
Arsenic	Carbon	Iodine	Oxygen	Tungsten
Barium	Chlorine	Iron	Radium	Uranium
Boron	Cobalt	Lead	Radon	Xenon
Cadmium	Copper	Neon	Silver	Zinc

Outer Space

N	L	E	M	I	M	N	U	A	K	R	J	D	G	Z	B	S	Y	A	Z	C	M	F	A	K
U	R	Z	N	T	I	X	J	U	I	O	A	I	S	D	Y	A	I	L	W	E	S	A	X	U
W	U	U	Z	U	N	V	N	K	N	V	M	O	H	J	K	Q	J	Q	G	L	F	N	R	Y
P	D	W	T	T	T	I	R	I	T	J	V	R	I	X	H	J	C	W	O	T	A	B	I	M
N	U	Y	U	A	T	P	B	O	U	V	X	E	U	S	I	U	J	T	R	H	D	X	N	B
Q	B	J	H	V	S	J	E	T	P	Z	E	T	Y	A	M	U	Y	S	B	O	Q	O	P	J
Y	R	E	Z	E	U	G	K	N	S	B	F	S	C	M	O	Y	L	B	I	A	L	Y	M	A
D	Z	N	U	P	L	N	B	C	Z	M	W	A	G	A	L	A	X	Y	T	L	O	V	G	T
T	H	E	I	K	V	I	A	H	L	S	R	U	H	T	E	G	K	H	O	A	P	Y	D	G
P	Z	T	R	Q	H	Q	O	T	C	R	T	U	W	L	W	G	K	P	G	K	V	D	A	R
O	E	N	B	Q	A	H	I	S	P	A	G	B	M	S	W	V	A	F	E	Z	N	H	L	A
R	S	O	B	O	H	P	P	L	L	M	J	E	A	U	U	Q	A	R	I	P	O	Y	C	V
V	K	D	K	O	O	X	U	N	Z	H	T	A	R	N	M	F	C	D	H	P	A	Q	E	I
T	G	C	S	Y	Q	T	R	G	K	E	I	H	E	A	L	F	U	G	K	Q	T	F	M	T
K	Z	H	S	O	O	E	G	I	O	M	R	B	A	R	J	N	Q	F	J	Z	F	U	C	Y
O	W	L	P	J	R	G	E	R	Y	Y	O	W	I	U	U	J	R	A	W	I	V	S	H	S
S	X	A	D	O	Y	R	U	C	R	E	M	O	Y	A	K	W	H	U	H	B	N	Y	J	K
M	B	S	L	H	E	C	B	Z	Y	E	U	D	N	K	M	U	G	P	J	F	C	I	L	D
O	Y	P	T	G	R	W	S	E	H	G	G	W	U	S	I	T	P	E	F	L	J	X	S	V
S	X	R	L	U	N	A	R	S	W	U	F	E	J	W	N	S	N	E	N	N	J	A	T	T
E	A	C	D	Y	B	T	O	O	U	T	A	R	P	W	O	W	S	A	T	E	L	I	T	E
E	W	N	K	G	I	U	V	J	E	N	V	D	N	Q	W	Z	C	P	A	U	S	G	U	V
K	Q	E	J	C	T	I	O	V	F	M	E	O	M	L	N	R	V	N	F	G	J	I	H	Y
A	L	Y	K	P	X	J	W	E	P	H	H	V	Q	L	H	Y	U	P	F	L	X	X	S	V
S	R	A	T	S	N	J	P	Q	P	W	H	E	E	N	E	H	X	M	J	U	J	P	U	I

Asteroid	Genesis	Lunar	Neptune	Saturn
Apollo	Gravity	Mars	Orbit	Stars
Earth	Helios	Mercury	Phobos	Sputnik
Explorer	Jupiter	Meteor	Pluto	Uranus
Galaxy	Kosmos	Moons	Satelite	Venus

Weather

D	G	W	X	N	X	T	F	B	D	R	P	J	X	R	M	D	T	M	Z	K	E	C	Z	F
U	H	N	J	Y	E	A	L	E	E	E	X	O	E	B	E	S	X	T	D	M	R	N	C	L
V	E	X	V	F	Q	Z	B	O	R	N	L	M	S	D	I	W	M	S	U	B	M	I	N	O
K	E	O	D	O	I	L	J	G	Y	C	R	I	I	M	F	T	O	G	D	A	N	S	M	X
I	H	G	Q	N	I	U	O	G	I	S	Y	M	A	O	R	E	W	H	S	W	I	I	L	I
P	U	N	B	Z	Z	L	M	P	E	L	U	C	G	H	X	C	P	U	S	X	R	S	B	Q
G	Z	T	Z	S	L	E	E	T	M	H	L	R	A	I	N	S	T	F	U	J	P	F	D	R
B	Y	A	R	B	X	M	Y	S	C	O	Z	L	N	A	I	A	N	G	V	D	I	D	U	Y
S	R	Y	V	D	G	B	S	Z	U	O	C	Y	M	Q	R	F	X	O	E	K	P	L	U	T
D	A	Z	D	L	C	Q	A	D	L	I	H	A	P	T	P	P	F	I	W	X	M	I	I	W
W	F	K	R	H	L	N	Y	H	C	K	R	A	S	N	O	G	J	J	M	K	L	M	U	N
V	X	N	A	U	C	E	T	O	C	L	I	F	N	E	I	U	B	V	T	Q	P	L	V	O
Y	I	T	R	N	M	R	T	A	A	B	U	F	N	Q	C	M	P	E	R	S	I	W	A	O
K	C	D	G	C	Y	O	X	G	F	W	X	T	C	K	H	R	I	A	F	A	N	B	W	S
R	S	R	O	O	P	E	K	I	K	S	K	V	I	Q	R	L	T	D	W	Z	Z	Q	I	N
B	P	Y	K	H	L	U	U	L	J	C	Z	S	R	M	K	E	S	Z	H	M	V	O	F	O
X	C	S	L	O	A	S	E	D	J	V	Q	N	R	E	N	I	O	M	I	B	W	O	H	M
W	P	T	Z	M	L	Q	S	X	Q	A	S	Z	U	E	X	D	R	E	C	Y	I	I	N	J
U	F	O	R	Y	E	R	J	R	B	S	D	L	S	C	L	L	F	O	U	C	T	X	K	K
O	S	R	U	H	G	U	B	Z	R	R	C	O	U	O	I	Z	L	L	W	T	K	Q	S	L
W	U	M	O	A	D	G	T	F	P	C	E	W	C	S	O	D	Z	P	H	I	Q	K	A	R
T	H	U	N	D	E	R	Y	J	U	X	A	E	E	I	H	N	R	I	U	Z	I	F	Q	N
T	V	G	I	S	M	H	M	M	P	Q	O	F	Z	O	Q	L	G	V	R	Y	F	X	Z	I
T	O	M	S	U	L	U	M	U	C	T	C	X	U	E	Y	H	K	D	T	D	R	C	W	I
X	R	P	C	U	O	K	F	Z	S	G	E	A	C	Q	R	W	X	Q	V	F	R	B	N	N

Blizzard	Cumulus	Frost	Monsoon	Slush
Breeze	Drizzle	Hail	Nimbus	Snow
Cirrus	Dry	Humid	Rain	Storm
Cloudy	Fair	Mild	Shower	Stratus
Cold	Fog	Mist	Sleet	Thunder

Composers

K	Q	Z	D	G	O	L	J	Z	I	M	F	N	U	P	G	R	X	Q	S	C	N	Y	F	F
D	F	I	O	E	T	G	X	T	E	Y	K	I	W	A	J	U	O	R	T	E	N	X	S	U
L	O	Y	N	I	E	X	L	Z	J	U	T	D	K	G	F	C	N	S	T	Y	E	C	F	D
S	K	P	J	G	L	L	V	T	Y	U	U	O	A	A	Y	T	E	T	S	I	L	H	D	B
Z	D	G	Z	L	J	R	H	D	P	K	R	R	R	N	E	B	I	J	T	I	Y	P	M	I
R	R	R	X	B	W	N	E	B	C	J	E	O	X	I	I	R	I	A	Q	U	N	D	V	V
M	P	E	Y	R	A	I	E	B	O	M	K	B	V	N	B	H	S	Z	J	P	U	I	B	G
Q	W	G	M	R	X	C	H	N	R	T	G	L	Q	I	S	B	C	M	E	B	T	D	M	X
T	O	B	G	A	I	L	H	G	R	L	Z	Z	O	C	O	Z	N	B	A	T	S	L	N	H
F	E	I	R	G	K	A	V	J	D	D	Z	I	N	I	L	L	E	B	V	H	E	A	I	U
K	T	Q	V	U	J	N	E	T	A	I	F	T	O	B	E	T	F	I	W	I	L	V	Q	T
B	O	O	N	P	S	O	E	Y	S	F	H	D	T	O	R	I	M	V	L	B	G	Q	I	Z
D	E	V	W	I	L	T	F	M	A	L	N	W	X	I	C	Z	H	E	E	D	A	I	N	Z
I	H	E	N	R	P	M	J	U	V	R	O	F	G	H	B	V	D	N	D	L	R	O	W	V
V	Z	R	T	R	E	O	R	H	J	F	Y	H	V	E	P	N	I	N	Z	E	E	M	Q	Y
I	T	M	S	H	N	E	H	Q	D	W	X	J	V	P	A	Z	U	S	Y	V	C	Y	O	P
V	E	R	D	I	O	P	U	C	C	I	N	I	B	H	R	S	S	M	H	A	R	B	B	G
A	O	V	V	U	Q	V	T	Q	S	X	Y	A	F	U	T	O	F	Q	S	R	T	E	T	Y
L	N	G	T	N	A	E	E	A	A	Z	R	M	O	Z	A	R	T	C	U	B	P	O	W	P
D	W	J	Y	C	G	P	B	N	O	T	P	N	R	R	R	G	X	B	I	L	M	T	X	E
I	A	J	S	Z	X	T	N	T	O	J	S	D	V	O	V	R	Q	A	L	B	N	Z	X	E
F	U	S	W	A	J	L	P	K	G	K	N	J	H	N	L	Z	Q	F	E	J	E	D	T	F
S	P	J	R	T	R	X	U	K	Y	O	Q	U	F	U	G	C	Z	S	D	X	X	L	Q	L
Z	O	P	A	A	F	Q	F	W	Y	Y	X	W	S	L	C	O	B	K	J	M	I	R	W	M
F	S	P	V	V	J	V	C	K	J	S	B	A	N	K	O	X	Z	E	G	H	Q	U	Y	S

Easy

				7	9		3	
2	3		5	1		7		
	9	8			3			
		3			2	6	1	
	6	2					8	
1								9
	8			3	1	9	5	
						4		8
		7				1	6	

Medium

			9				5	
	2		7				9	
7		5	3		8			
9		7					2	5
	6	1					3	
					7		1	
		9	1	8			6	
					4		5	

Difficult

	5	1		7				
							5	
		9						7
							1	
								8
8		6						
		2	9					
	3			8		9		5
5		8			2		4	

Expert

				3				
				9				
4	9						3	
	2	9						
	3							
		2						
8	5	6						
	4						8	1



Fawn near Clarks Fork.

John Mitchell/ Photographer



Claire Ficke, program counselor at Cyphers Mine, gets ready to do a mine tour. Kaitlyn Chaballa/Photographer



Evan Kline, Trading Post clerk, announces the arrival of the one millionth camper at Philmont on July 9. Christine Henri/Photographer



Water flows into a creek near Abreu.

Doyle Maurer/Photographer



An American flag blows in the wind, as a storm travels toward Indian Writings.

Bethany Nilson/ Photographer



Children watch the Fourth of July rodeo in Cimarron.

Morgan Court/Photographer



Participants refill their water bottles on Friday, July 11 at French Henry.

Cassidy Johnson/Photographer