

# PhilNews

## Conversations with Wally Berg

By Beverly Ponterio  
Staff Writer



Wally Berg speaks at the staff opening program Tuesday, May 29. Berg shared anecdotes of mountain climbing all over the world and offered advice to staff. AL GERMANN/PHILNEWS PHOTOGRAPHER

Wally Berg received the Distinguished Staff Alumni Award on May 29 in recognition of his life achievements. Current and former staff showed admiration as they rose in a standing ovation before his speech and again after. "That skyline was just burned into my consciousness, my being," said Berg in the keynote speech. He spoke of Philmont, of the "skyline of adventure," and the freedom the Philmont staff lives. The Ranch had profound influence and directed him towards a life above the clouds.

Berg said that climbing has

always been in his blood, but the support and autonomy of Philmont began his career. The high peaks call to him.

He lived in Colorado for 26 years as an expedition guide forming teams and taking them up the Rocky Mountains. From there he began to climb internationally and eventually joined teams attempting to summit Mount Everest in Nepal.

He has climbed Everest 10 times, only reaching the summit four times. During the 1998 GPS Expedition, he was at the summit for two hours, an unheard-of feat.

Continued on page 4, Conversations

## Philmont Phoenix

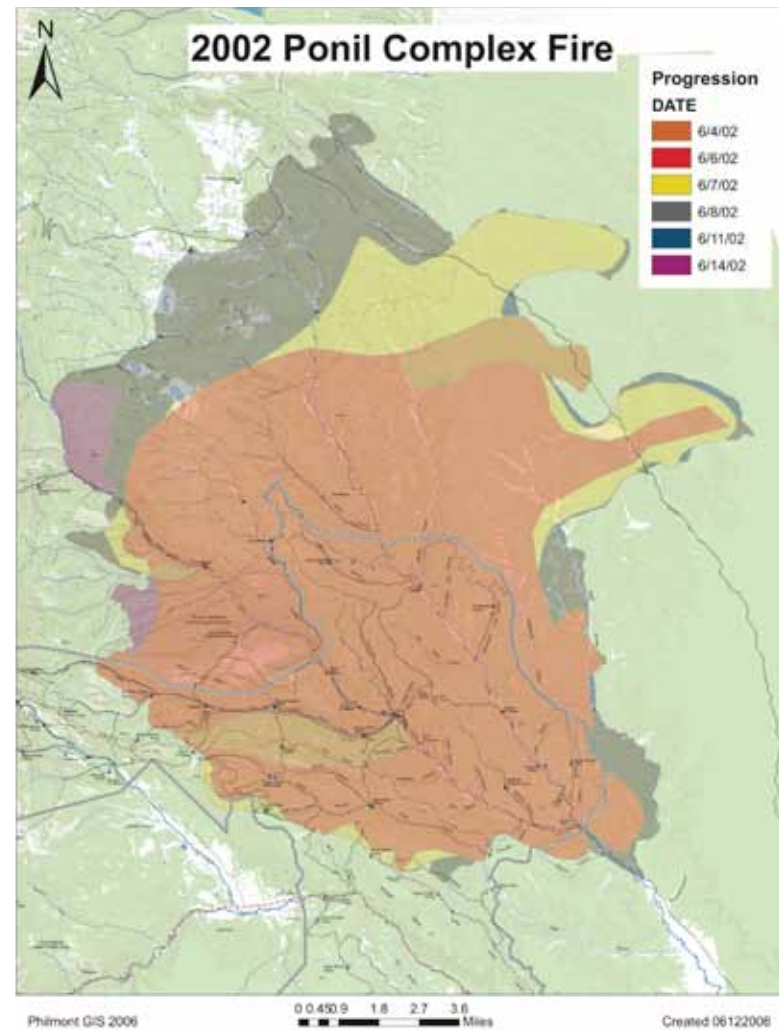
By Katie Sill  
Staff Writer

Ten years ago wild fires raged across Philmont's North Country burning over 28,000 acres of Philmont property and a total of 92,500 acres. Ignited by four different lightning strikes compounded with severe drought conditions, the fire began on June 2. At the time, it was the largest wildfire in New Mexico state history.

Andrew Dennis, a staff member from 2002 and witness to the Ponil Complex Fires, recorded his observations. "The place is on fire. At times you can't see the Tooth and I can't say that I've seen any of the peaks since I have been here," said Dennis. "...I have seen some fires on the Ranch in past years and there was a bit of smoke that makes its way to base, but this is so much bigger."

By June 17, the fire was contained thanks to the heroic efforts of Philmont staff and over 1,000 firefighters. What was left, however, was an ugly scar on Philmont's otherwise beautiful landscape. Some areas burned so hot there was nothing left standing; not even the skeletal remains of trees.

Almost immediately after the fire was contained, Philmont's Conservation Department went to work repairing the damage. According to



Conservation Field Manager John Celley, the conservation team began by cutting down burned trees and building terraces. The goal was to manage flash floods in the area and prevent any loose sediment from washing away.

Celley explained that after a wildfire, the soil becomes hydrophobic. This means that the soil cannot absorb water because the burned organic material has

bonded to the surface. To revive the soil, the conservationists used a method called scarification, or tilling the soil with rakes. In doing so, the organic materials are broken up and the seed bed is prepared for planting.

On Thursday June 27, 2002 a plane flew over the Ponil Complex spreading a mixture of native grass seed over 8,000 acres.

Continued on page 4, Phoenix

	Friday 6/8	Saturday 6/9	Sunday 6/10	Monday 6/11	Tuesday 6/12	Wednesday 6/13	Thursday 6/14	Friday 6/15
Highs	88	88	85	85	83	85	87	81
Forecast	Sunny	Sunny	Sunny	Mostly Sunny	p.m. T-storms	Partly Cloudy	Sunny	Sunny

# PHILNEWS

## TEAM

**Editor-in-Chief**

Owen McCulloch

**NPS Manager**

Bryan Hayek

**PhilNews Editor**

Amanda Push

**PhilNews Writers**

Beverly Ponterio

Garett Franklyn

Katelyn Sill

Matthew Baide

**Photography Manager**

Katy Mooney

**Photographers**

Albert Germann

Connor Spurr

David Spitznagel

Lynn DeCapo

Matthew Prokosch

Rachel Taylor

Erin Nash

**Photo Lab Lead**

Matthew Martin

**Photo Lab Techs**

Zack Sherrard

Alexander Jokerst

**Marketing Manager**

Greg Dunbar

**Marketing Staff**

Vincent Haines

**Lead Videographer**

Sean Barber

**Videographer**

Nick Pittman

Sunday 3	Monday 4	Tuesday 5	Wednesday 6	Thursday 7	Friday 8	Saturday 9
					<b>8:00 p.m.</b> Disc Golf meeting at Baldy Pavilion.	<b>1:00 p.m.</b> Day trip to Raton pool meeting at staff parking lot.
Sunday 10	Monday 11	Tuesday 12	Wednesday 13	Thursday 14	Friday 15	Saturday 16
<b>11:00 a.m.</b> Brat Day in Baldy Pavilion. Climbing wall events.	<b>8:00 p.m.</b> Humans vs. Zombies starting in Baldy Pavilion.	<b>8:00 p.m.</b> Rugby on Health Lodge lawn.	<b>9:00 a.m.</b> Day hike up the Tooth of Time. Meet at the SSSAC.	<b>8:00 p.m.</b> Table Game Triathlon in the SSSAC. Monsters Inc. in Baldy Pavilion.	<b>8:00 p.m.</b> Swing dance in Baldy Pavilion.	<b>8:00 p.m.</b> Fashion show in Baldy Pavilion. Dodgeball at the Health Lodge field.

# Featured Games: Sudoku

## EASY

4	1		7		8		2	
2			6				1	4
	9		4					
						4		
3			2		9			7
		6						
					5		4	
1	6				7			3
	7		9		2		5	1

## DIFFICULT

2		7				1		
					7	4	5	2
		6						
	6				3	5		
		9					7	
					7	6		4
								9
6		1	4	8				
			5				2	8

# Cow Paddy's Grill

Location: 301 C East 9th Street Cimarron, NM 87714

This is a new little grill in Cimarron. The menu consists of steaks, fried chicken by the plate or the bucket, hamburgers, chicken sandwiches, stuffed baked potatoes, crispy fries, onion rings, nachos, soft tacos, salads, and ice cream! (Shakes and sundaes). Everything is priced to bring in the locals. Come on in!



# Aspen Ranch Candle Co



Location:  
321 E. 9th Street (in the Buffalo Nickel building)  
Cimarron, NM 87714

Hours:  
We are open 9am-6pm  
7 days a week all summer.

# Make This Summer Great

By Mark Anderson  
Director of Program

A true friend of Scouting, Jim Rogers, CEO of Campgrounds of America (KOA) encourages his employees across the nation to adopt a strategy for "Making it Great."

The "it" is the experience. We have talked a lot about the experience that Philmont offers to each of us and to each participant during these last few days of training.

We each play an important part in making the entire experience great. Now that we are welcoming our first participants of the summer, we have the chance to touch their lives

and share in their experience.

Jim shares the following thoughts about "Great":

Greet - Be the first to smile and speak.

Relate - Empathize and listen.

Explorer - Ask questions and offer options.

Act - Take ownership and follow through.

Thank - Show your appreciation and invite them back.

Join me on our 2012 quest of "Making it Great!" Let's greet, relate, explore, act and thank.



SAMANTHA WAIDLER / PHILNEWS 2011

## Continued from page 1, Conversations

Berg said his focus was too strong for him to feel cold. He knew that he could perish, but he had a job to do.

When asked about climbing with a team, he spoke about how serious it is to be at the top of those high mountains, how your body does not belong at those altitudes. "You have to be aware of where you are," he said. "And when you're with a team you have to be aware of everybody in the team."

Berg focuses on people as does his company, Berg Adventures International. He left June 7 for his 49th summit of Mount Kilimanjaro in Africa. Kilimanjaro draws him back because of the people, the culture, and the climb. He says that it feels familiar there and it is a "very serious mountain" at 19,300 feet in elevation.

While the skyline of Philmont remains etched in his memory, many more have imprinted in his being. His deep respect for

the environment pushes him to maintain the Leave No Trace ethics he learned at Philmont all over the world. He relates the practice specifically to Antarctica.

"There leave no trace has a totally new depth of meaning because you're in such a pristine environment that any organic or plastic, any material you leave there is foreign. Even the human waste there, we not only contain it and pack it off the climb, we literally remove it from the continent of Antarctica by air."

The only trace left by Berg Adventures International is one of positive cultural exchange and understanding.

Berg believes that everyone who has a passion for working outdoors and being a part of nature belongs there.

"Follow your passions, be true to yourself and be genuine when you deal with people. That's what I've done all my life and

the opportunity has followed."

He learned those things working with Philmont guests in, "welcoming them in a spirit that led to an appreciation of nature and one another."

Every expedition comes with its own set of challenges. It is well known that not all mountaineers meet their goals the first time climbing. Berg speaks of failure in a way that will linger as a challenge.

"You can't assume that the summit's yours because you've trained hard or you've got the proper equipment. You've got to give the mountain its due, and when you walk away, it's not a loss, it's not a failure, you'll be back. And that's the way you've got to approach mountains and goals and mountaineering."

## Continued from page 1, Phoenix

From 2002 to 2005 the conservationists spread grass seed and set around 20,000 bales of straw to slow the movement of soil downhill. It wasn't until 2008 that they began replanting trees. As of May 2012, about 15,000 seedlings have been planted in the Ponil Complex.

"Philmont is serious about this restoration project" said Celley. "You can tell by the amount of time, manpower, and money it's invested." According to Owen McCulloch, associate director of program, in times of drought the

conservation team hand waters each of the newly planted trees.

**"I have seen some fires on the ranch in past years and there was a bit of smoke that makes its way to base, but this is so much bigger."**

However, the restoration process did not include the entirety of the Ponil Complex, nor is the project complete.

## BOOK SIGNING

Monday, June 11

3 p.m. at the Philmont Museum and Seton Memorial Library

**Harriet Feiberger**

*Lucien Maxwell: Villain or Visionary*

This book examines the life and influence of Lucien Maxwell on the Cimarron area 150 years ago.

In this biography, readers are introduced to a man who controlled nearly two million acres in north eastern New Mexico.

Those interested in the history of Philmont and its surrounding area are encouraged to attend.

# New Campfire and Old Traditions

By Garrett Franklyn  
Staff Writer

For the thousands of participants that come and go through the dusty trails of Philmont, their journey begins and with the opening and closing campfires at Base Camp. On June 8, those campfires will change.

Performed by the Activities Department, the campfires have long been part and parcel to the Philmont tradition. Crews arrive meet their Rangers and check in, before heading toward the opening campfire bowl with the evening twilight deepening around them. For some of the campers, it's their first sip of the lore and history of Philmont and Cimarron. For others, it's more.

"You don't come to Philmont [just] to hike; you can hike anywhere," said Jeff Zantek, 19, campfire manager in the Activities Department. "You come for the program."

It's for that reason he and Activities Manager Tim Collver decided to reinvigorate the first and last campfires crews will see at Philmont. The two wanted an experience that will combine the history of the area with what participants will learn in the backcountry.

"We wanted to get the

message across—the history of adventure and service, that's what's carried through," Zantek said. "We have to follow the journey of the participants."

A journey that will test one's mental and physical resolve with exacting severity, taken step-by-step, made on tired feet and tired minds. It is a journey of anticipation, excitement, zealously, and, sometimes, fear.

"I remember sitting there: I'm 14, scared to death, worried my feet will freeze off tomorrow," Collver recalled. "Then, later on, I remember being the overconfident crew leader."

But for the long train of participants leaving the Welcome Center for the opening campfire, there is only the chatter of anticipation hanging in the air, fluttering above the stretching beams of flashlights cutting swaths through the twilight-turned-night.

"How these Scouts feel, I used to feel that way," Zantek said. "Before any ordeal [like Philmont] you feel certain emotions."

These emotions are what Collver and Zantek tried to capture in the new opening campfire. Instead of having characters from Philmont's and Cimarron's past

teaching history, they will express different sentiments that many participants and staffers feel during their time at Philmont. Rather than lecturing, the characters will impart lessons to the campers.

"Each of the characters has an underlying theme—a specific audience they are addressing," Zantek said.

The anticipation of the arrival date looms and a heart-thumping exhilaration carries one through roads and towns to see the silhouette of the Tooth drawn against purple skies. However, as participants settle into their seats at the opening campfire, that excitement disappears into a dim murmur.

Their faces hold a certain zealously; their eyes, a certain uneasy. Around them, purple mountains stand like mighty colossi against a star-lit panorama: ready to be overcome, and as ready to overwhelm.

"Everyone who comes through leaves a mark—the people shape the land, and the land shapes them," Zantek said. "It [the journey] is unique for each individual."

That uniqueness, a feeling participants and staffers alike share for the Ranch, evolve into palpable

form through the characters within the opening campfire, who each embody an emotion.

"When you're walking across this land, this is where a lot of history converges," Collver said. "We want them to grasp what happened here at this place."

In many ways, the new opening campfire has been tailored toward preparing participants for both the trail ahead and the backcountry campfires they will be experiencing. To achieve that, this year's Activities staff has been training with the Backcountry staff.

"We want everything to be connected," Collver continued. "There's an old saying: one Philmont, one staff, but it's also one program."

And when the final chords of the opening campfire subside, and the participants meander toward their tents, Zantek and Collver want them to be prepared for one thing: The idea of Philmont.

"It's a feeling of constant self improvement—of always learning," Zantek said. "If we don't constantly improve, we become stagnant."

The feeling of growth is a path that will begin on the first steps the campers take toward the opening campfire to the last ones they

take during the closing campfire before they depart the ranch.

Between these steps, many more are taken: friendships grow, maturity develops, and the first seeds of personal responsibility sprout. Participants learn both the value of the land and of their personal achievements within that land, which Collver desires to be the focus of the new closing campfire.

"This year, we just wanted to switch it up," Collver said. "The theme of the past had been homebound; I wanted to change it to trail-left. Not to celebrate going home, but to celebrate their accomplishments."

He didn't want to celebrate going home, but leaving the trail.

By the time the campers march toward the closing campfire bowl, the anticipation, excitement, zealously, and fear they may have started their journey with has dissolved. Instead, some of those initial emotions have been joined with Philmont, planted into the dirt with each step.

"We are bestowing a passion and a connection to this place," Collver said. "Every staffer and every camper should have that."

And just as the land will change them, they will change it.

## Cimarron West

**Straw Hats  
Bowler Hats  
Western Hats  
Outback Hats  
Leather Hats  
Bull Whips!**



**Western Wear,  
Carhartt Jeans,  
Boots,  
Moccasins  
& Hand-made Belts**

**Casey & Gayanne  
Jeffers**

**575 376 2423  
256 10th Street  
Cimarron, NM 87714**



# Philmont Hiking Guide

Information Gathered by Matthew Baide  
Designed by Garrett Franklyn  
Staff Writers

Philmont is a huge place, and not everyone knows where to hike. So, here is a guide to show you how far it is to hike from turnarounds and staff camps.

Average hiking speed is 2 mph, so use these distances to plan your Philmont adventure. Remember, never hike alone! Always hike with at least one other person.

More information regarding hiking and back country is available in the Logistics Office.

## Staff Camp Locations

### Staff Camp

Abreu  
Apache Springs\*  
Baldy Town\*  
Beaubien  
Black Mountain  
Carson Meadows  
Cimarroncito  
Clark's Fork  
Clear Creek  
Crater Lake  
Crooked Creek  
Cypher's Mine  
Dan Beard  
Dean Cow  
Fish Camp  
French Henry  
Harlan  
Head of Dean  
Hunting Lodge  
Indian Writings  
Kit Carson/Rayado  
Miner's Park  
Miranda  
Phillip's Junction\*  
Ponil  
Pueblano  
Rich Cabins  
Ring Place~  
Sawmill  
Seally Canyon~  
Urraca  
Ute Gulch\*  
Whiteman Vega~  
Zastrow

### Closest Turnaround (DIM)

Zastrow (1.6)  
Zastrow (12)  
Maxwell (4.7)  
Lover's Leap (16.8)  
Lover's Leap (7.8)  
Zastrow (3.3)  
Cito (4.1)  
Cito (2.1)  
Cito (13.5)  
Lover's Leap (5.3)  
Lover's Leap (14.2)  
Cito (6.2)  
Ponil (5.9)  
Trail Canyon (4)  
Zastrow (8.5)  
Maxwell (8.9)  
Turkey Creek (4.3)  
Maxwell (2.7)  
Cito (3.1)  
Ponil (4.6)  
Kit Carson (0)  
Lover's Leap (4.7)  
Maxwell (2.1)  
Cito (14.9)  
Ponil (0.8)  
Maxwell (3.8)  
Ponil (6.6)  
Cerroso Road  
Cito (7.8)  
Cerroso Road  
Lover's Leap (2.5)  
Cito (5.5)  
Cerroso Road  
Zastrow (0.4)

### Closest Trail Camp (DIM)

Rimrock Park (0.4)  
Lost Cabins (0.9)  
Ute Meadows (1.5)  
Porcupine (2.8)  
Shafer's Pass  
Old Abreu (1)  
Aspen Springs (0.6)  
Ponderosa Park (1.5)  
Mt. Phillips (3)  
Bear Caves (1.6)  
Porcupine (1.1)  
Lambert's Mine (0.9)  
Cook Canyon (1.7)  
Turkey Creek (4.1)  
Agua Fina (1.3)  
Copper Park (1.3)  
Vaca (0.5), Deer Lake (1.7)  
Baldy Skyline (1.7)  
Cathedral Rock (1.4)  
Anasazi (2.1)  
Ute Meadows (1.5)  
North Fork Urraca (1.4)  
Maxwell (1.5)  
Buck Creek (1.3)  
Dean Cutoff (0.9)  
Pueblano Ruins (1.1)  
Cook Canyon (8.1)  
McCrystal Campground^  
Upper Sawmill (1.7)  
McCrystal Campground^  
Toothache Springs (1.4)  
Devil's Wash (2.2), Ute Springs (1.1)  
McCrystal Campground^  
Rayado River (0.8)

~ **Valle Vidal, Distances Undetermined**

\* **Commissary**

^ **National Forest Service Campground**

**DIM Distance in Miles**

# Staff Camp Directory

**Abreu:** Cantina, Lodge/Cabin Tours, Mexican Dinner, Mexican Homestead. Southwest.

**Apache Springs:** 3-Dimensional Archery, Jicarilla Apache Life. South.

**Baldy Town:** Commissary, mining museum, check-in for hiking Baldy Mountain. Northeast.

**Beaubien:** Evening Campfire, Chuck Wagon Dinner, Horse Rides, Western Lore/Branding. Southwest.

**Black Mountain:** Blackpowder Rifle, Blacksmithing, Post-Civil War Settlers. South.

**Carson Meadows:** Search & Rescue, Wilderness Medicine. South.

**Cimarroncito:** Rock Climbing and Rappelling. Middle.

**Clark's Fork:** Evening Campfire, Chuck Wagon Dinner, Horse Rides, Western Lore/Branding. Middle.

**Clear Creek:** Blackpowder Rifle, Rocky Mountain Fur Co. Middle.

**Crater Lake:** Evening Campfire, Continental Tie & Lumber Co. Middle.

**Crooked Creek:** Homesteading, Lodge and Cabin Tours. South.

**Cypher's Mine:** Blacksmithing, Evening Campfire, Gold Mining and Panning. Middle.

**Dan Beard:** Challenge Events, Leave No Trace camping. North.

**Dean Cow:** Rock Climbing. North.

**Fish Camp:** Fishing, Fly Tying, Lodge/Cabin Tours. Southwest.

**French Henry:** Blacksmithing, Mine Tours. Northwest.

**Harlan:** Burro Racing, Shotgun Shooting/Reloading. Middle.

**Head of Dean:** Challenge Events. Northwestern.

**Hunting Lodge:** Lodge/Cabin Tours. Middle.

**Indian Writings:** Archaeology. Northeast.

**Kit Carson/Rayado:** Blacksmithing, Tomohawk Throwing, Camp Complex Tours. Southwest.

**Miner's Park:** Rock Climbing and Rappelling. South.

**Miranda:** Blackpowder Rifle, Burro Packing, Mountain Man Rendezvous. Northwest.

**Phillip's Junction:** Commissary. Middle.

**Ponil:** Burro Packing, Cantina, Chuck Wagon Breakfast & Dinner, Cowboy Action Shooting, Evening Campfire, Horse Rides, Western Lore Branding. North.

**Pueblano:** Evening Campfire, Continental Tie & Lumber Co. Northwest.

**Rich Cabins:** Homesteading, Leave No Trace Camping, Lodge/Cabin Tours. North.

**Ring Place:** Astronomy, Weather Forecasting. North (Valle Vidal).

**Sawmill:** Shooting/Reloading--30-06. Middle.

**Seally Canyon:** Demonstration Forest, Search & Rescue, Wilderness Medicine. North.

**Urraca:** Evening Campfire, Challenge Events. Southeast.

**Ute Gulch:** Commissary. Middle.

**Whiteman Vega:** Mountain biking. North (Valle Vidal).

**Zastrow:** Evening campfire, dutch oven dessert, geocaching, land navigation, GPS technology. South.

# Hiking on a New Path

By Matthew Baide  
Staff Writer

Participants will see Philmont on a new path this year, as the Philmont Treks have all new itineraries for 2012.

“We have had some of the same itineraries for a long time,” Associate Director of Program Chris Sawyer said. “Many of them were really great, but our goal was to try and spread the crew loads out more evenly across all of backcountry camps.”

Sawyer, Logistics Manager Sid Covington and Director of Program Mark Anderson restructured the itineraries so that underutilized camps and trails would be used this summer. Each itinerary had to meet certain criteria, including a mountain experience, multiple program opportunities and quality stays in trail camps. Routes were reworked to make sure each participant experiences as much as possible while at Philmont, making sure to utilize each crew's time.

“We were trying to balance out the camp loads better,” Covington said. “We wanted to distribute and use more trail camps so crews can have more of a wilderness experience.”

Among the 34 new itineraries, there are three specialty treks: climbing, fishing and challenge.

The climbing trek is focused toward rock climbing and

receiving advanced instruction. Participants will climb at Dean Cow and test their problem solving skills at an anchor rodeo. They will climb regular crew routes at Cimarroncito, receive advanced training in the evening, and have an opportunity to climb in an area where Philmont participants have never climbed.

“We are trying to maintain and build upon solid fundamentals so we can take our climbing program to the next level,” Sawyer said.

The fishing trek will give participants the opportunity to fish at many places around Philmont, including the Rayado, the Agua Fria, Buck Creek, Cimarroncito Creek and the Cimarroncito Reservoir. Participants will top off their trek by fishing on a stretch of the Cimarron River, known for some of the best fishing at Philmont.

“We're also sending them to Deer Lake with hopes of getting some rain in the future,” Sawyer said jokingly.

The challenge trek will start with team building and initiative games. They will complete other team building and Leave No Trace games while staying in the trail camps. Their skills will be tested during challenge events at Urraca, to prepare for their final test: conquering the high ropes

COPE Course. The challenge trek is the longest of the three special itineraries. Campers will hike 71 miles through the backcountry.

During offseason, Sawyer spent time in backcountry scouting locations for several new trail camps. The goal is to have each crew spend a night by themselves in a trail camp. The staff hopes to build a handful of small campsites to help accomplish this goal. “The itineraries are not only about the program, they are also about the hike,” Sawyer said. “The hike is about the total experience... often times, a crew might have a breakthrough in one of these areas while they are at a trail camp. When you are distracted by program and staff camps, you don't necessarily focus on the quiet times and special moments that you might have, say, while watching the sunrise just east of Comanche Peak Camp.”

Depending on how participants respond to 2012 itineraries, Sawyer and the staff will adjust itineraries to make sure every participant experiences the best of Philmont.

“I like the itineraries, I think we have some good ones,” Covington said. “There is room for improvement next year. It's always a moving target.”



2012 Hiking Guide. DAVID SPITZNAGEL/ PHILNEWS PHOTOGRAPHER

## Sustainability Team Calls for Staff and Campers to Go Green

By David Pedrick, Sustainability

Philmont Scout Ranch delivers wilderness learning experiences that last a lifetime, and to continue we must responsibly manage our resources and wastes.

This summer, Philmont will host over 28,000 participants; each will consume a large amount of resources inherent and thus produce waste. As an institution that wishes to shape these individuals, Philmont must lead by example and handle waste with world citizenship and environ-

mental sustainability in mind.

Currently, the Conservation Department's sustainability coordinators are working toward this goal. Their work will make Philmont a place where participants can enjoy the wonders of the local areas without harming the global environment.

The sustainability team has focused on waste diversion from landfills, having already rerouted tons of recyclables from the local landfill.

Last summer, Philmont relocated 33.4 tons of recyclables from the landfill to a recycling center in Angel Fire. This included 19 tons of cardboard, 10 tons of plastic, and 3 tons of aluminum cans. These recyclables would have required up to 56 cubic yards of landfill volume.

Last year Philmont sent several semi-trailer loads to recycling. Each trailer is able to carry 127 yards<sup>2</sup> of waste. This year Sustainability hopes

to increase that volume.

Also initiated last summer was the trail meal bag recycling program. In 2011, Philmont recycled 1340 pounds of bags, or 43,000 bags. However, of the estimated 300,000 trail meal bags served only 14% were collected.

This summer the goal is to double the amount of recycled trail meal bags. Please deposit bags at the Services check-in window or any backcountry camp and encourage

all participants to contribute.

This year the sustainability team hopes to increase the quantity of backcountry recyclables collected, increase efficiency of trail meal bag collection, and collaboration with area camps.

A new initiative starting this year is the collection of #5 plastics. The Commissary distributes about 8,000 individual serving yogurt containers, a #5 plastic, per summer to Backcountry camps.

Continued on page 21, Sustainability



# Handicraft Highlights

By Katie Sill  
Staff Writer

Looking for a fun way to spend an afternoon? Head over to the Philmont Training Center (PTC) and visit the Handicraft Lodge. The Handicraft Lodge offers a wide variety of creative activities. All supplies can be purchased from the shop at the front of the Handicraft Lodge – staff members will receive a 10% discount. Although the primary clientele for the Handicraft Lodge are PTC participants and their families, everyone from Philmont staff is welcome to participate as well.

“We are more than happy to help anyone make anything” said Handicraft Director, Sandy Danna.

Danna emphasized that PTC participants take priority, especially when things get crowded. Staff members should take this into account when planning to spend time at the Handicraft Lodge. Due to conference

scheduling, Wednesday afternoons will be a popular time for PTC families to visit.

The Handicraft Lodge is broken into specific areas: jewelry, leather, fabrics, ceramics, and a children’s area. Handicraft staff members are stationed in every area to help bring artistic visions to life.

In the leather section personalized belts, wallets, knife holders, and book covers can be made. Take out frustrations by pounding designs into the leather using metal stamps and hammers. Any leather item made at the Handicraft Lodge can also be branded at PTC Western Night every Tuesday throughout the summer.

Ukrainian handicraft Staff member, Sophia Melnychuk, works in the fabric area. She helps decorate any of the fabric items sold in the shop including T-shirts, vests, aprons, boxers, onesies, tote bags, and

pillowcases. Stamps, paint, iron-on appliques, or tie-dye can be used to decorate the fabrics. Melnychuk spent the week of training making examples to help inspire customer creativity. “I love my job” said Melnychuk, smiling.

The ceramics section is located in the back of the Handicraft Lodge. Here, more options for painting are available to choose from. Participants can choose from animal figurines, ceramic wall hangings, and Indian Wedding Vases to name a few. There is also a pottery wheel for participants to make their own ceramic pieces. According to Danna, this is an independent activity for experienced participants only.

Not an artistic person? Handicraft Staff member, Chloe Dodson doesn’t believe that’s true. “We could probably make an artist out of anyone” said Dodson, laughing.

## The Handicraft Lodge will open on June 11

### Hours of Operation

Monday: 1 p.m. – 5 p.m. 7 p.m. – 9 p.m.  
Tuesday: 9 a.m. – 5 p.m.  
Wednesday: 9 a.m. – 5 p.m.  
Thursday: 1 p.m. – 5 p.m. 7 p.m. – 9 p.m.  
Friday: 9 a.m. – 5 p.m.



Sofia Melnychuk makes handbags at the PTC handicraft building. Melnychuk, who is from Ukraine, is a first-year staff and had never been to the U.S. before this summer. DAVID SPITZNAGEL/PHILNEWS PHOTOGRAPHER

Take out or eat in on our shaded patio

**the Porch**  
market & deli

636 East Ninth Street  
376-2228  
theporch@qwestoffice.net

Visit our website Find us on Facebook

Free WiFi access Call us about catering

Good Food in Cimarron  
Fast, Fresh, Friendly

Healthful Homemade Soups, Salads, Sandwiches, Bakery, Smoothies, More

Fresh Produce Market

Monday-Friday 10:00-2:00  
Saturday Market 10:00-Noon  
Sunday Brunch 10:00-1:00

## Chaplain Aaron Baughman

Hello Philmont! My name is Aaron Baughman, and I am serving as the Protestant chaplain this summer at Philmont. It is my first year on staff and I am excited to be here and to get to know all of you! I felt called to this ministry through my passion for nature and the outdoors. I am currently attending seminary at Trinity Lutheran Seminary in Columbus, OH where I am studying to become an ordained minister in the Evangelical Lutheran Church in America. This past year I also worked at the OSU Medical Center as a Hospital Chaplain.

I currently serve as a board member for the Ohio Interfaith Power and Light. It is a non-profit that works with religious communities to help them become more environmentally friendly.

I also have worked this

year to create a more stable environmental advocacy group at my seminary, creating an internship position for seminary students to serve on to promote greening on our campus.

For my undergraduate education, I attended Warren Wilson College in Asheville, NC, where I received a degree in environmental education. I have also had the opportunity to study abroad in Thailand and El Salvador.

I am an Eagle Scout, have attended two national jamborees and been to Philmont twice, once for a trek and once for National Junior Leader Instructor Camp. And be sure to say "hi" to my fiancé, Sunny Cooper, who is just returning from a trip from Tanzania and will be working at Hunting Lodge!



Aaron Baughman poses for a portrait on Sunday, June 3. Baughman is the Protestant chaplain at Philmont this summer. RACHEL TAYLOR/PHILNEWS PHOTOGRAPHER

## Father Mike Wheelahan

Greetings! As one of the Chaplains serving you this summer, I welcome you to this "pile of rocks."

I am Father Mike Wheelahan. This is my third summer here at Philmont and every year gets better.

I am only here for three weeks. You may ask yourself, "Why only three weeks?" Is it because the Ranch can't stand me? Is it because I do so much spiritual and emotional damage the other chaplains have to have the rest of summer to clean up my mess? Well if you suspected either of these things, you'd be wrong. I come because I only get three weeks of vacation a year in my ministry and I choose to spend them here with you.

I work in Oklahoma in a city called Guymon. My parish is the entire panhandle of Oklahoma: 5,700 miles of desert, cactus, and sky.

I work with two associates. One is from Columbia and the other is from Nellor, India. Our house is like a small scale United Nations. Together we serve five churches and have 10 services each weekend in Spanish, English and both.

Why do I come back to Philmont? I come because of the people I serve.

The folks who pass through these mountains are some of the best Scouts. They come with enthusiasm and excitement, looking for adventure. They embody the ideals of Scouting and their examples inspire me to be a better Scout, person, and minister. I come out here to give my all to an organization I believe in and work with people who give me hope. Here, there is hope in a world that sometimes looks dark.

This summer let us each take up that light of hope and carry it high so we may see the path ahead. As Mark Anderson challenged us at Aims and Methods, we are here to provide "life changing experiences for those around us."



Father Mike Wheelahan. RACHEL TAYLOR/PHILNEWS PHOTOGRAPHER

Cimarron Canyon  
WOODWORKS

SERVING NORTHERN NEW MEXICO AND SOUTHERN COLORADO  
WITH OVER 35 YEARS EXPERIENCE



ANTIQUES  
FURNITURE  
UNIQUE GIFTS

CABINENTRY - INSTALLATION

VISIT OUR SHOWROOM IN  
CIMARRON TODAY!

31097 Hwy. 64 Cimarron  
575.376.2015

310.310.2010

# Bishop Gerald A. Gettelfinger

I squished my name and title to: +Padre. The “+” simply indicates that I am a Roman Catholic Bishop. Feel free to call me +Padre.

I have been a Roman Catholic Priest for 51 years. The first 28 years I served as a priest in Indianapolis; the last 23 years I served as the Diocesan Bishop of Evansville, Indiana. I retired on June 29, 2011.

I was never a Scout. As a boy we did not have Scouting, so I belonged to the 4-H Club in our farming community. The Scouts I grew to know kept talking about a magic place called Philmont. I could never quite understand. What’s the big deal about Philmont? That all changed in 1998.

As a bishop, I was appointed as Liaison to the National Catholic Committee on Scouting and the Boy Scouts of America. I served in that capacity until 2011. I came to Philmont every year thereafter to participate in the PTC week of Scouting in the Catholic Church.

That very first year I did the first of five St. George Treks. I was 63 for the first and 71 for the last.

My, oh, my! Did I ever come under the spell of this magic place we call Philmont in God’s country!

For the last seven years I have come back as Chaplain as well. Last summer I enjoyed two months and this year I get to stay here all summer!



**Bishop Gerald A. Gettelfinger. DAVID SPITZNAGEL/PHILNEWS PHOTOGRAPHER**

## Grommets and Sails By Paul Grasse Unit 201

If you saw Philmont Tent Cities last week, you might have thought you were at a sailboat race. Fifty plus mph winds pummeled the tents which resulted in the replacement of 200 tents.

The 10-by-14 foot tents are designed to protect and house occupants and their possessions. They can withstand harsh treatment from the elements. They are anchored to their foundation by 17 grommets (metal rings) through which nails are driven. If any ring is missing, the structural integrity is compromised.

Because of wind speed, there must be a system to support the movement of the tents. There are five bungee cords on each side attached to the tent and the external supporting pipe framework. The cord should be tight, but not too tight.

Tent City residents should regularly inspect their tents and contact their Tent City Manager if additional materials are required. Your summer home will not stand if there is damage.

The majority of tent tears result from steel storage lockers being placed next to a side of the tent. When the wind blows with great force, it causes

the tent to strike the sharp corners of the locker and rip.

Remember steel storage lockers are provided to secure valuables and smellables. Be sure to use them and keep your tent free from trash.

When leaving the tent the two looped cords should be fastened to the nails in front of the opening and the three velcro pads should be secured. This will prevent the wind from sweeping inside the tent.

Maintain your tent and it will provide you a safe summer home.

*Terra Java*

Step into the past  
Come to Terra Java

- Antiques
- Books
- Bicycles
- Movies
- Music , CDs & LPs
- And more

Jessie (505) 426 - 4410  
100 Washington Ave.  
Cimarron, NM 87714

We also specialize in Estate Sales  
Contact: Carmen Gress

(505) 603 - 4267

Email:

kkarmelgress36@hotmail.com

## L. Martin Pavletich Studio

Fine Art in Oils & Pastels  
Philmont and Regional Landscapes

Come in and check out our selection of affordable prints.

We are now creating unique Wind Bells

428 E 9th St. (1/2 Block east of Village Hall) - 575-635-2829  
www.lmartinpavletich.com - LMPartnm@yahoo.com

## Storyteller Cinema

110 Old Talpa Canon Road, Taos, NM  
(575) 751-4245

### Snow White and the Huntsman

2hr 7min - Rated PG-13

*Action/Adventure/Drama/Romance*

12:45 p.m. 3:35 p.m. 6:40 p.m. 9:30 p.m.

### Men in Black 3

1 hr 46min- Rated PG-13

*Action/Adventure/Comedy/Scifi/Fantasy*

1:00 p.m. 3:40 p.m. 6:30 p.m. 9:20 p.m.

### Men in Black 3 in 3D

1hr 46min - Rated PG-13

*Action/Adventure/Comedy/Scifi/Fantasy*

12:30 p.m. 3:15 p.m. 6:15 p.m. 9:00 p.m.

### The Avengers

2hr 22min - Rated PG-13

*Action/Adventure/Scifi/Fantasy*

12:15 p.m. 3:30 p.m. 6:45 p.m. 9:50 p.m.

### Coming out June 8

Madagascar 3: Europe's Most Wanted

Prometheus

Safety Not Guaranteed

Bel Ami

\*These movies may not be available at Taos's Storyteller Cinema

### Andy Samberg Leaving Saturday Night Live

By: Associated Press

After seven seasons on Saturday Night Live, actor Andy Samberg is leaving the cast. Samberg is known for his fake music videos such as "Lazy Sunday" and "Shy Ronnie." Fans can still see him on the big screen in his new movie "That's My Boy" with Adam Sandler.

### George Lucas Names Lucasfilm Successor

By: Associated Press

Kathleen Kennedy was named co-chair and successor of Lucasfilm Ltd. This marks the start of George Lucas's retirement plans. Kennedy has worked on multiple well known films such as "Schindler's List," "The Sixth Sense," "Jurassic Park," and most recently "War Horse."

### Cheesecake Factory is Stale

By:MSN

The William Blair & Co. predict quarterly revenue at \$448 million which is \$10 million below the consensus

### Polygamy Charges Against Sister Wives Dropped

By: US Magazine

Utah Country prosecutors dropped polygamy charges against Kody Brown from TLC's show Sister Wives. Utah's Attorney General Mark Shurtleff said that since the Brown family's arrangement was decided upon by consenting adults he would not pursue criminal charges.

### Drew Barrymore Married

By: US Weekly Actress

Drew Barrymore married Will Kopelman at her estate in Montecito, California. This is the actress's third marriage. The first was in 1994 to Welsh bar owner Jeremy Thomas, which lasted only a month. The second as to comic Tom Green in 2001 and lasted less than six months.

### CDC Declares Zombie Apocalypse Impossible

By: MSNBC

The Center for Disease Control and Prevention (CDC) declared that zombies don't exist. The CDC has no evidence for a virus that reanimates the dead or even replicates zombie-like symptoms.

### Cissy Houston Writes Book

By: Associated Press

Cissy Houston, mother of Whitney Houston, has a deal with Hapercollins, to write a memoir about her daughter. It will be "unabridged and unbelievable." The book is scheduled is scheduled to come out February 2013.

**PhilNews is now accepting submissions to be printed in future issues.**

**Either I-Camp or email any articles you wish to be considered. Please submit all articles by Saturday to be in the following Friday's issue.**

**Email:  
philmontnps@  
philmontscout  
ranch.org**

## Coffee Shop Features a Wide Range of Talents

By Katie Sill  
Staff Writer

As the sun set over the Tooth of Time on June 4 at 8 p.m. staff members fleeing the first rain of the season warmed themselves in the staff dining hall. The cafeteria was transformed into a coffee oasis complete with live entertainment. In addition to coffee, the event provided hot chocolate and cookies.

Hosted by the Philmont Activities Staff, guests were treated to a variety of acts from a classic

cello solo to improve comedy to vocal performances. Director of Program, Mark Anderson, surprised everyone by playing the Philmont Hymn on a hand saw. Placing the handle of the saw between his legs, Anderson summoned the warbling melody by bending the saw and drawing the bow across the blade.

"The best thing was getting to see everyone's different talents," said Adele Owen,

Female Tent City Manager.

Over 80 members of the Philmont staff from all departments attended. Camping Activities Special Events Coordinator, Savannah Moore has been pleasantly surprised with the amount of staff participation.

"There've been times when I've actually run out of supplies! That never happened last year..." said Moore, smiling.

Moore hopes that

participation numbers continue to be high throughout the season; especially after Scatter. Popular events like the Coffee House will regularly occur in the evenings.

Anyone interested in performing at the next Coffee House should contact the Activities Staff for more information at extension 1244.

A Sports Update With Matthew Baide

# National Sports

## Local and Regional

### College Baseball

The New Mexico State Aggies were eliminated from the College World Series on June 2, losing to the Missouri Tigers 6-2. The New Mexico Lobos are still alive, playing an elimination game against Creighton Bluejays. If the Lobos win, they will have to defeat UCLA Super Regionals (NCAA.com).

### Arena Football

**New Mexico Stars-** The Stars lost their seventh straight game, falling to the Everett Raptors 57-35. The Raptors are in last place in the Intense Conference

and have two games left this season. The Stars play their final home game tonight against the Wichita Wild (IFL.com).

**Colorado Rockies-** Rockies are currently 22-30, 10.5 games back of the division leading Dodgers (ESPN.com).

**Denver Broncos-** The Denver Broncos are currently holding offseason team activities, and the team is not holding back with Peyton Manning. He is coming off of a nerve injury that forced him to sit out last season, but offensive coordinator Mike McCoy said Manning is working on all of his throws (Associated Press).

### Stanley Cup Finals

The Los Angeles Kings won an NHL record 10th straight road game, defeating the New Jersey Devils 2-1 in overtime. The Kings hold a 2-0 series lead as the series heads to L.A., where the Kings can sweep and win the cup at home. Game 5 would be on June 9 if necessary (Associated Press).

### NBA Finals

NBA finals start this week, with the (Heat or Celtics) taking on the (Thunder or Spurs) for the Larry O'Brien Trophy.

### National Spelling Bee

14 year old Snigdha Nandipati won the Scripps National Spelling Bee last Thursday. She won when she spelled "guetapens," which means an ambush, snare, or trap. Last year, Nandipati placed 27th,

but this year earned the top prize. She won after the second place finisher, Stuti Mishra, misspelled "schwarmerei," which means excessive, unbridled enthusiasm or attachment. (CNN.com)

### Baseball

Johan Santana became the first pitcher in New York Mets history to throw a no-hitter en route to an 8-0 victory over the St. Louis Cardinals; Rangers lost fourth straight to the Angels 3-2; Baltimore Orioles ended a six game losing streak with 2-1 victory over the Tampa Bay. This puts the Orioles in a tie for first in the AL East (Associated Press).

### Boxing

Manny Pacquiao will fight Timothy Bradley for the World Welterweight

Championship tomorrow night.

### Belmont Stakes

I'll Have Another will try to become the first horse since Affirmed in 1978 to win the Triple Crown. Race time is 5 p.m.

### Sports this week

#### NBA Finals

Check ESPN.com for dates of games U.S. Open- Rory McIlroy will look to defend his title June 14-17 at The Olympic Club in San Francisco, California. McIlroy set a U.S. Open record 16-under-par in 2011 on his way to an eight shot victory (Usopen.com).

#### French Open

Action will continue from Roland Garros until the finals on June 10 (RolandGarros.com).

## CIMARRON TRADING COMPANY

"If you can find it,  
we have it"



Knives, Swords, Skins  
& Skulls

Open 8 a.m. - 8 p.m. Free Wifi on the front porch!

10% Staff Discount  
Military Discounts

JUST LOOK FOR ALL THE FLAGS

**Netflix to Pay \$9 Million**

By The Motley Fool

A class-action privacy lawsuit accuses Netflix of retaining customer information after subscribers canceled for longer than stipulated within the Video Privacy Protection Act. After customers cancel their subscription, Netflix keeps their information, allowing the company to contact former subscribers with promotions and deals in a gambit to entice them into re-subscribing.

**Spiders Invade Indian Town, Leaving 2 Dead**

By The Huffington Post

An army of venomous spiders invaded a town in India, killing two. Scientists are still studying where the arachnids are from and what provoked the droves of spiders. Doctors are still trying to determine what type of venom the spiders emit.

**Famed Author Ray Bradbury dies at 91**

By The New York Times

Ray Bradbury- author of *Fahrenheit 451* and *The Martian Chronicles*, among others- died Tuesday in Los Angeles. His agent, Michael Congdon, confirmed the author's death. During his life, more than eight million copies of his books were sold in 36 different languages, though none won a Pulitzer Prize.

**Zimmerman Ordered to Return to Stanford**

By The Huffington Post

George Zimmerman has returned to Sanford, Fla. after a judge ordered his bond revoked. According to the judge, Zimmerman may have been insincere about his finances; having previously indicated possessing limited funds, Zimmerman has since raised thousands in legal defense funds through a website. Zimmerman has been charged with second-degree murder in the fatal shooting of 17-year-old Trayvon Martin, an issue that proved to be divisive across the country.

**Mubarak Verdict to be Appealed**

By The Associated Press

Hosni Mubarak, former president of Egypt who was ousted after mass protests raged across the country during the Arab Spring, was sentenced Saturday for his complicity in the deaths of protestors, a verdict his prosecutor plans to appeal.

**Richard Dawson, 'Family Feud' host, Dead at 79**

Richard Dawson, who appeared in "Hogan's Heroes" and "Family Feud," died Saturday, June 2, due to esophageal cancer-related complications at Ronald Reagan UCLA Medical Center in Los Angeles, according to his son.

**Dow Falls 275 Points**

By The Associated Press

The Dow Jones industrial average fell by 275 points last Friday, the steepest one-day drop it has suffered since last November. Traders retreated to bonds and investors bought gold while the economic slowdown forced oil to its lowest prices since October. Hiring during March and April were also weak.

**Syrian Opposition Forms New Rebel Coalition**

By The Associated Press

Syrian activists announced a new rebel coalition Monday to unify separations within its fight against Syrian President Bashar Assad. Known as the Syrian Rebels Front, the group announced its formation in Turkey with the hopes that it will be able to organize the opposition against Assad and successfully overthrow him.

**Eurozone Unemployment Raises to Record High of 11%**

By CNN Money

The Eurozone's unemployment rate has risen to 11%, the highest since the 17-nation conglomerate created a common currency 13 years ago. Meanwhile, the unemployment rate of the 27-nation European Union swelled to 10.3%. Unemployment across Europe has also risen, buoyed by 24.3% unemployment in Spain and 21.7% unemployment in Greece.

**Canadian Dismemberment Suspect Arrested in Germany**

By CNN

The search for a Canadian porn star accused of killing and dismembering a man in Canada ended Monday when suspect Luka Rocco Magnotta was arrested in a Berlin Internet café, according to authorities in Canada and Germany, CNN reports. An employee recognized Magnotta and alerted a group of German police cadets, who then arrested Magnotta without incident.

**Archaeologists Uncover Remains of Shakespearean Theatre**

By The Huffington Post

Archaeologists in London have discovered the remains of an Elizabethan theatre where some of William Shakespeare's play were first performed. Called The Curtain, the theatre opened in 1577 and ceased operations in 1599 when the Globe Theatre was built across the river. The theatre is believed to have included "Henry V," "Romeo and Juliet" and even Ben Johnson's "Every Man in His Humour."

**Starbucks to Buy Small Bakery Chain**

By The Huffington Post

Starbucks Corp. has offered a \$100 million deal to purchase La Boulange, a small, San Francisco-based bakery chain that Starbucks hopes will reinvigorate its menu offerings. Products will begin in Bay Area stores before being rolled out on a national level. La Boulange has 19 locations in the Bay Area and primarily serves salads and sandwiches.

**Scott Walker Wins Recall Vote**

By CBS News

First term Republican Governor Scott Walker survived a recall election in Wisconsin after he received flak for resisting the collective bargaining of unions within the state. Walker led his Democratic challenger, Milwaukee Mayor Tom Barrett, with 54 percent of the vote to Barrett's 45 percent, after 94 percent of the expected vote came in. Barrett conceded the race Tuesday night. According to the New York Times, Walker and fellow Republican allies spent \$45.6 million on the race as of May 21, as compared to Barrett's expenditures of \$17.9 million.

# Don't Reward the Curiosity of Bears

By Beverly Ponterio  
Staff Writer

"Check every pocket of every pack every time. Make bears uncomfortable. Report all bear and mountain lion sightings. Never give food rewards. Follow all bear bag procedures." These are the Philmont Five coined by Philmont's Bear Researchers Ben Carlucci and Grace Bond.

Black bears are curious creatures with a keen sense of smell. They sleep through the winter, and when they wake up they begin to forage for food. This is when they can become a nuisance.

"A fed bear is a dead bear," said Carlucci.

Rewarding bears with food, whether intentional or not, conditions them to associate humans with easy meals.

"I hiked back into base camp from a long hike in. I was so tired that I just went to bed and figured that no animal would come into my tent while I was there to get the trail food from my pack," said Bond about a former hike at Philmont.

"I found out I was wrong when I heard rustling and low growls coming from the foot of my cot. A coyote tore through my stuff to get into the bear bag I kept my food in. I scared it away

as I got up, and watched it scamper off towards Tooth of Time ridge."

The goal of Bond and Carlucci is to make bears as uncomfortable around humans as possible. How can participants and staff help to do this?

"Scare the snot out of it," said Bond.

Make yourself appear larger in any way possible. Make loud noises and throw sticks and rocks near, not at, the bear. Only staff may throw things at the bear, never participants.

Never play dead or run away. Acting as prey triggers the bear to attack. Were a bear ever to attack, fight back with everything you have and use any tool available as a weapon.

Mountain lions are also a concern and you must report all sightings. Always hike in groups of two or more to prevent making yourself a target for lions. Avoid hiking at dawn or dusk when lions usually hunt. If you see one, appear large and back away slowly.

If staff and participants do not follow procedures, bears will continue to wander into campsites. These are nuisance bears.

A nuisance bear shows no fear

of humans and does not readily leave when confronted. These bears receive a yellow tag on the ear from the bear researchers.

Nuisance bears have a three-strike policy, so by reporting a bear you are not sentencing it to death. Not informing the bear researchers of a bear sighting could potentially sentence a bear to death. Report every bear sighting whether it is a nuisance or not. This allows Bond and Carlucci to track the bear population of Philmont and to maintain both human and bear safety.

Remember, we are encroaching on their territory, not the other way around.

Some simple ways to avoid bears entering campsites is to check every pocket of every pack every time to ensure no one accidentally rewards animals. Also adhere to bear bag procedures and keep an "Oops Bag" ready to string up before bed. This is where anything left in the pockets will go.

If you have questions check in with Bond and Carlucci in the conservation office, extension 1249. Stay "Bear Aware."



Bear researcher Ben Carlucci poses with bear skull for a portrait at the Conservation office on Monday, May 28. LYNN DECAPO/PHILNEWS

## Ben Carlucci

My career in Scouting and biology began in Williamsport, Pennsylvania.

At Shippensburg University, I pursued a bachelors in Biology, and a Secondary Education Certificate.

I interned at National High Adventure Sea Base in the Florida Keys where I was involved in teaching marine biology to youth. The next summer I became a Program Director at Camp Karoondinha.

For my undergraduate research project I assessed fawn health by massing hunted deer organs Department of Letterkenney Army Depot.

In April of 2012, I presented my research for two collegiate forums. As a bear researcher I get to combine my love of science and Scouting.

## Grace Bond

I was raised in hickville Oregon. My dad was Scoutmaster, and since I did everything the boys did, it took me a while to realize that I was not actually a Scout. Or a boy.

Love for the outdoors and animals has taken me to different world locations, though not as many as I would like, yet. My goal is to get back to Alaska, specifically Kodiak Island, to work with brown bears.

I graduated from Brigham Young University of Idaho in 2011 with a bachelors in Wildlife Biology. I have been able to study and work with many birds and mammals.

I did a ten day trek in 2001, a Rayado trek in 2003, came back as a Ranger in 2006, and since I can't stay away, I'm now a Philmont bear researcher, one of my dream jobs.



St. James Hotel  
Pizza on the patio

Now serving thin-stuffed and thick crust.

Pizza ready daily from 11 am to 11 pm.

Homemade pizza sauce  
Unlimited soft drink refills

Build your own pizza.

Get it to go! Call 575-376-2457

617 South Collision Ave.  
Cimarron, NM 87714

# The Wild Within

By Beverly Ponterio  
Staff Writer

*Corvus corax*

This morning while walking back to my tent a dark shadow swooped past my head. I followed the path I thought it had taken and found a common raven, *Corvus corax*, perched on the fence post. I stared at its gleaming black figure and felt a wave of nostalgia.

Before coming to work here, I worked at a small zoo in Pennsylvania, and my favorite job was training our raven, Honey. We often gave her daily diet in a puzzle feeder. We would spend 30 minutes creating the puzzle; she would figure it out in two.

Ravens are considered opportunistic omnivores. Diet may include fish, fruit, grains, invertebrates, small mammals, birds, etc. Those inhabiting cities will feed on garbage and road kill.

What you may not know is that the family Corvidae is the most intelligent of the bird families, and ravens have the memory capability of a 5-year-old child.

They are trainable, quick to learn and great at playing follow the leader. They are also territorial over their food.

When we fed Honey, she would store most of the food in her crop (storage pocket in throat) and hide it.

She would use her beak to move pebbles in her enclosure and essentially regurgitate the non-digested food inside the new hole. She would then gently pick up dried leaves and place them on top to cover it



A common raven is perched on a Philmont fence near the Welcome Center. DAVID SPITZNAGEL/ PHILNEWS.

using a few pebbles as a weight.

Ravens are generally between 22 and 24 inches tall, which is rather intimidating if they're sitting on your shoulder. They are typically calm around humans.

Their range lies mostly in the West and up into Canada and Mexico. Keep an eye out around Philmont for these marvelous birds.

golden orb of the sun.

She flew up and up, but the closer she grew to the sun, the more charred her feathers became, turning their radiant blue to a cold black.

By the time she'd reached the sun, she had lost all of her blue. The spirit did not approve

## Meet The Writer



Beverly Ponterio, writer of *The Wild Within*, leans against a pole outside the NPS Office. RACHEL TAYLOR/ PHILNEWS.

I live on American Heritage Alpaca Farm and work at ZooAmerica Wildlife Park. Life always includes animals for me now. Prior to moving to Pennsylvania, I only had dogs.

At home, I live on my family's alpaca farm. Our herd has 21 animals with three babies due this coming week. I love to sit in the barn with the younger alpacas and let them come up and nuzzle my nose.

I also have a horse named "Sarg" who is about 30. The day I saw him he charged full speed at me and I didn't move. He stopped just short of trampling me and put his nose to my face while I stroked his neck. We've been perfect for each other since.

I started working for ZooAmerica in May, 2010, and

promised myself I would spend my life sharing my passion and knowledge of wildlife with the world. I was fortunate enough to work as a wildlife educator, thus facilitating the sharing and growing of that knowledge.

I am constantly looking for more information about animals. I watch every wildlife documentary I can and collect field guides and animal atlases and guides.

I hope you all will read, learn and enjoy. If you have an Philmont animal story you'd like to share for the next issue, please stop by the office and ask for me.

We live in a wild world, yet act as captives. I instead hope to hold the world captive by exposing the wild within it.

## From Blue to Black, the Story of the Raven

Contributed by Grace Bond

This story is an oral tradition of many Native American tribes that was shared with me by Grace Bond.

Many moons ago, the raven was the most beautiful bird in all the land. She had brilliant blue feathers and a mesmerizing song. During the day the earth

was flush with color, but at night an evil spirit stole the sun and cast into shades of gray.

Raven saw that this made all of her friends terribly sad. She tried to figure out how she could fix the darkness of the earth.

She decided to fly to the evil spirit to take back part of the

of Raven's presence and she knew she had to turn back. But, before she did, she grabbed a hot ember in her beak.

She flew so hard and fast toward the earth that the burning coal sent sparks into her throat, burning it horribly. Her beautiful song was turned

into a harsh croaking sound. When she got to earth, the coal she had brought cast the earth into an even more vibrant beauty.

Though Raven's feathers went from a radiant blue to black and she lost her song, She counted it as not if only to see her friends happy.



# Philmont and Your Future

By Owen McCulloch, Associate Director of Program



Owen McCulloch is the Base Camp and Seasonal Personnel Director at Philmont. KATY MOONEY/PHILNEWS.

Your time on the Philmont Staff will be unlike any other job you'll ever have. The kind of things you do, and the responsibilities placed upon you, can provide experiences that will last you a lifetime—if only you could figure out how to explain that to your friends, family and potential employers!

Yes, Philmont is a summer camp. A big summer camp with more than 25,000 participants over 11 weeks. And a training/conference center. And a large retail operation. And a model for conservation and recreation. And a motorpool. And ranching operations. And a medical infirmary that is also a teaching hospital with a pharmacy and

a negative-pressure infectious disease room. And farming operations. And a food service operation serving 750,000 trail meals, 360,000 dining hall meals, 27,500 Chuck Wagon meals, and 45,000 backcountry staff meals. Oh, and we are currently the 34th largest city in New Mexico.

Philmont is obviously not a regular camp—and you really need to find some ways to describe what you do more than just saying “I worked at a camp.” For any Philmont staff member, you receive more training and responsibility when compared to other organizations. You have job skills used at Philmont that will relate to other jobs in the “outside world”—you just need to find out

<p><b>Description #1</b>                  Provided customer service                  Answered questions                  Restocked area                  Kept area clean</p>	<p><b>Description #2</b>                  Provided direct customer service to over 150 individuals every day.                  Problem solved issues for customers with a 99% satisfaction rate.                  Responsible for inventory controls and maintaining proper stock of items.                  Provided a safe and clean area for staff and customers.</p>
<p><b>Description #1</b>                  Work with Scouts to help them learn hiking skills.                  Seeing that the crew is in the right place at the right time to receive the best possible service in meals, health care, orientation, campfire program and bus transportation.                  Pointing out to crews various opportunities to enjoy natural and historical features of the Philmont country.</p>	<p><b>Description #2</b>                  Educational guide and mentor to between 60 and 100 customers.                  Through exceptional time management and prioritization, help direct and provide opportunities for customers to maximize their experience.                  Through a servant-leadership style, provide guidance and assessment to help facilitate the development of a high functioning, independent team.</p>

how to describe your skills in a way that non-Philmont and non-Scouting people will understand.

Let's say for instance you are working in a service-oriented job (see description #1):

Or maybe you are a member of the Ranger Department (see description #2):

Regardless of what your job is this summer, look for ways to describe it beyond the typical (and inaccurate) answer, “I worked at camp.” Think about the actual skills you used beyond the simple function of the skills, and think about what it takes to the specific skill well. That is what you want to be able to describe.

**How Much, How Many, So What?**

An important idea to keep in mind when crafting your resume is the question your potential employer will be asking: “So what?” By this I mean you must make your experiences relevant to the person(s) reviewing your information. Remember that the

person is more interested about what you can do for them in a new position, not just what you've done in the past.

Be sure your resume leaves the reviewer thinking about what you are going to do, not just what you've done in the past. Focus on your accomplishments, and answer the unasked questions about “how much, how many, and so what?”

**What should your resume look like?**

There are three general styles of resumes:

Chronological—best if you have a long, unbroken work history and are looking at moving up in the same employment field.

Skill or Function—lists skill sets, not just jobs. It works better with people who do not have a long-term single type of job experience, or are looking for a job change to a different industry.

Targeted—a great format for targeting your skill set towards a specific job, but does require multiple resumes for each different

job you may be applying for.

**What about a cover letter?**

You should certainly submit a cover letter when applying for a specific position. Make sure to keep your letter short, and be sure to address your letter to a specific individual; never submit it to “To whom it may concern” or “Dear Sir or Madam.”

Be sure to tell them which position you are specifically applying for, and don't repeat the information included in your resume. This is a brief letter of introduction, and should direct the employer to your skills or background that make you a good candidate for their consideration. Remember, a cover letter is a custom item—you are applying for a specific position with a specific person and you are highlighting your specific skills.

Use your cover letter to highlight what you have to offer and what the employer is seeking.



# Continued from page 17, Future

The cover letter is an opportunity to describe your skills, abilities and personal qualities and how they would benefit the employer.

**Okay, so what do you put in a resume?**

- Personal Data
- Name, permanent address, phone, professional email
- Objective
- Employment goals
- Work Experience or Work History
- Body of your resume
- Education and Training
- Degrees, certifications
- Activities, Organizations and Community Service
- Specifically mention if you've been an officer, board member, etc.
- Professional Affiliations, Associations and Military
- Job or career related groups and military

experiences are a plus

- **References:** It is acceptable to list references as "Available upon request," but make sure you're ready to send them if requested.

**What about volunteer experiences?**

Absolutely include your volunteer experiences on your resume. While some individuals list them separately under "Volunteer" or "Community Service" sections, do not hesitate to include them under your Work Experience in your resume. Just because you were not paid a salary for the work does not mean it does not have value. Describe your accomplishments just as you would with any other job history. Don't forget to describe it with your potential employer's questions in mind: "How many? How much? So what?"

As a volunteer, did you

manage a project? Did you oversee a group task? Did you have a budget or a timeline? Did you accomplish the goal you set out to achieve? These are all directly marketable skills—don't miss the opportunity to include these on your resume.

**Now what?**

There are hundreds of resources online to help develop a resume, and don't ever hesitate to make changes to it if you are not getting the results you are looking for. Take your time putting it together, and keep thinking about those ways to explain what you do at Philmont. Don't hesitate to try and explain what you do in terms that someone else might understand—because they probably won't ever understand what an "ist" does, much less an "Invasive Species Specialist," "Group Leader," "Trading Post Clerk" or "PC" means.

## Yvonne's Crossroads of Style and Fitness



Tanning Manicures Pedicures  
Standing & Free Weights  
Cardiovascular Equipment

(575)376-4533  
P.O. Box 373

Cimarron, NM 87714

Salon: Tues. thru Fri. 8:30 a.m.- 7 p.m.  
Gym: Mon. thru Sat. 6 a.m.- 9 p.m.

## UNIFORM REMINDER

As we continue to greet new participants at Philmont daily, it is important to keep up with our appearance and uniforming.

Wear your Philmont ID tag at all times on the Ranch. It is part of our customer service and security procedures.

Appropriate uniform (as per your Staff Guidebook) must be worn for all meals and when in Philmont public areas (does not include Staff Tent City).

Appropriate uniform is required in the Silver Sage Staff Activities Center during the day. Appropriate casual attire with a Philmont ID tag is acceptable after dinner in the SSSAC.

**REPEATED INFRACTIONS OF THE STAFF UNIFORMING REQUIREMENTS WILL RESULT IN DISMISSAL**

## WORD JUMBLES

- snukk**
- wreef**
- fuminf**
- rettul**
- lawrd**
- rigan**
- roylop**
- whyrot**

Connect to Past,  
**PRESENT,**  
and Future Philmont  
staff with the...

*High Country* maga-  
zine, year-round  
events, the Philm-  
ont Backcountry  
Cookbook, books of  
Philmont experiences,  
continued support for  
Philmont, PSA outdoor  
gear,

And more!!!

It's just \$15.00 for a year's  
membership!

I-Camp Randy Saunders this  
form or stop by our office next  
to the Beaubien Room at PTC.

**SIGN UP NOW!!!**

Name: \_\_\_\_\_

Position/Department: \_\_\_\_\_

Permanent Address: \_\_\_\_\_

City, State, ZIP: \_\_\_\_\_

Birthday: \_\_\_\_\_

Email: \_\_\_\_\_

Phone: \_\_\_\_\_

Signature: \_\_\_\_\_

Payment method (Check appropriate  
box):

CASH \_\_\_\_\_ CHECK \_\_\_\_\_

CREDIT CARD:

# \_\_\_\_\_ EXP. \_\_\_\_\_

DATE: \_\_\_\_\_

PAYROLL DEDUCTION (through  
July 31) \_\_\_\_\_

[www.philstaff.com](http://www.philstaff.com)



Mark Anderson and Ranger Department Leadership build the framework of a yurt at base camp on Saturday, June 2. The yurt, which will be open in time for the arrival of campers on June 8, will be used as clearance space for the Tooth of Time Traders. MATTEO PROKOSCH/PHILNEWS PHOTOGRAPHER

# Staff Member of the Week: The Faithful Gardener

By Katie Sill  
Staff Writer

Ralph Pacheco, 76, is no stranger to the Cimarron area. Even though he's only worked four summers at Philmont, his family history is deeply intertwined with the history of the Ranch, itself. In 1942, Pacheco's father, Samuel Pacheco, moved from the family ranch in Wagon Mound to work for Waite Phillips. At the time, R. Pacheco was six years old. S. Pacheco lived and worked at the sheep ranch in Rayado driving wagons for the shepherds. During the harvest time, R. Pacheco's mother picked apples in the Phillips' orchard. Like many others, he holds Waite Phillips in high regard. In addition to affecting thousands of Boy Scouts over the years, Philmont has impacted the Cimarron and the surrounding area. For that, R. Pacheco is grateful. "Donating this Ranch was the best thing Waite Phillips could have done for this community," said R. Pacheco. He is more than happy to

share his family history with anyone. Trips to Rayado take on special significance when R. Pacheco gives a tour. He provides a firsthand account of how the ranch functioned. Touring Rayado with him is a real treat for Villa Assistant Curator, Amanda Allred. According to Allred, R. Pacheco presents more than just his experience and history; there's real emotion contained in his stories. "It's fun listening to him talk about the history of the area" said Allred. On February 2, R. Pacheco returned to Philmont to work as a gardener at the Villa Philmonte and Philmont Training Center (PTC). In the past, he worked in many areas of the Ranch from setting up tents in basecamp to the backcountry camp, Sawmill. R. Pacheco helps plant and care for many of the flowerbeds including the PTC rainbow and the Zia symbol. "He's the kind of person that can make anything grow." said

Betty Pacheco, camping registrar and R. Pacheco's sister-in-law. "Gardening is his passion" This was proven when R. Pacheco was asked to share his gardening tips. He claims that tickling the roots when planting is the key because it allows the roots to spread out and take hold. Healthy, nutritious top soil and access to water is also important. R. Pacheco is extremely pleased that Philmont is willing to invest in its landscaping by watering regularly. Philmont's beautiful landscaping is one of his favorite part of the Ranch. Not many people get to spend their day doing the work they love. Even at Philmont, when staff members are able to work in God's country, the prospect of work can seem daunting at times. R. Pacheco is blessed to spend his days fostering the most beautiful gardens on the ranch. The joy he takes in his work is an example that everyone on staff should emulate every day.



Ralph Pacheco gardens at the Villa Philmonte on June 4, 2012.  
CONNOR SPURR/PHILNEWS

## CIMARRON ART GALLERY

Art, Jewelry, Sculpture  
Best Selection in Cimarron  
10% discount for Philmont Staff  
Open 7:30 a.m. to 6 p.m.!



337 9th St. Cimarron, NM  
(575) 376-2614

### Continued from page 8, Sustainability

Philmont is currently seeking out a partnership with Preserve Products whom collects #5 plastics and re-processes them into toothbrushes. This will significantly affect Philmont's input to local landfills. This summer brings the Philmont community a great opportunity to become stewards of the Earth. The sustainability team will help move the Ranch in that direction. If you have any ideas, comments, and recommendations please contact David Pedrick or Mike Crockett in the Conservation Office, extension 1249.

## Philmont Museum-Seton Memorial Library and Gift Shop

4 miles south of Cimarron on Hwy 21  
Open Daily 8 am to 5:30 pm June-August  
Free Admission

Pathway to Scouting  
Artworks of Ernest Thompson Seton  
Philmont Highlights  
and  
100 Years of the Boy Scouts of America

Please visit our gift shop where you will find a wide selection of books, Native American jewelry, pottery, Pendleton Blankets, Zuni fetishes, Kachinas and much more.

ASK about tours of the  
Villa Philmonte  
Summer home of Waite Phillips built in 1927  
Suggested donation \$5 per person

## Kit Carson Museum at Rayado

7 miles south of Philmont Museum  
Open Daily 8 am-5pm June 8-August 22  
Free Admission

For Information and Reservations Please Call 575-376-1136



Katie Sill MATTEO PROKOSCH/PHILNEWS PHOTOGRAPHER

## Katie Sill

While this is my first summer on staff, this is not my first summer at Philmont. I lived on the ranch in the mid 90s when my dad, Beau Sill, served as Chief Ranger. My return to Philmont has been a HOMECOMING for me.

Shockingly, I have never been backpacking or camping before. The closest to camping I've ever had is when my dad set up a tent in our back yard.

Some of you may be wondering: What is she doing here? Well, who wouldn't want to have their first high adventure experience at Philmont?

Throughout the season I will be documenting my experiences in the PhilNews.

I have one more semester at Illinois Wesleyan University to complete my double major in Chinese Studies and Creative Writing. I've traveled extensively. Most recently I spent a semester studying abroad in Hangzhou, China.

Upon graduation, I plan to attend graduate school which will allow me to spend many more summers at Philmont.

## Defending the Canvas Castle

By Katie Sill  
Staff Writer

Once I arrived at Philmont I was eager to unpack my things and move in to my new home.

Even though I received a tent assignment, I had no idea where my tent was. I entered Female Tent City from the west and couldn't see any of the tent labels. The two returning staff members I drove with suggested I choose a tent at random to store my things until I found my assigned quarters.

During the day, rough winds caused many tents around Base Camp to collapse. The wind was so bad the Tent City managers warned people not to sleep in their tents that night. The other option was to bring our foamies to the Baldy Pavilion and sleep in the open air. I decided to stick with my rent-a-tent not knowing the perils of a New Mexico windstorm.

I only unpacked my sleeping bag that night, knowing I would move in the morning. Armed with only my cell phone light, I faced the darkness of my first night in Tent City.

For hours I lay cowering in my sleeping bag, jumping at every slap of canvas as the tent shook. With each lurch, the wooden beam in the center creaked and threatened to snap. I kept seeing myself being impaled by splintered wood or buried alive whenever I closed my eyes.

After hours of sleepless cowering, enough was enough. Realizing one of the walls had come unhooked from the cement foundation, I leapt out of bed. Inside I screamed "You cannot defeat me wind!" with delusional fury. I felt like Lieutenant Dan (from Forest Gump) in a hurricane when I faced the windstorm head on.

I crawled on the ground and re-secured my tent despite the winds that seemed to personify all my fears, anxieties, and self-doubts about the summer ahead. While the wind could break the tents around me, it could not break me. I was determined to defend my canvas castle to the end.

### PUBLIC SERVICE ANNOUNCEMENT

Current Philmont Staff can buy the following ads for a reduced price in the 2012 Maverick July, 4 Rodeo Program

Business Card size...\$20

1/4 page...\$45.00

1/2 page...\$80.00

Full page...\$125.00

Take this opportunity to show your support and be a part of the 90th Maverick Rodeo!



SALSA BY THE PINT! Hours 10 am - 2pm  
Open 7 Days a Week  
Memorial Day to Labor Day  
Finalist in the New Mexico Magazine Salsa Contest

# Backcountry Training Teaches History & Art

By Garrett Franklyn  
Staff Writer

After a tomahawk whizzes past him and bounces harmlessly off a tree with a dull thwap, Lee Price, affectionately nicknamed “Blue,” steps forward and corrects the thrower before handing him another tomahawk.

From 9 a.m. to 4 p.m. last Saturday, staff from each of the interpretive backcountry camps were ushered to the Kit Carson Museum at Rayado, where Blue, a nine-season staffer, is camp director. During the day, they learned about the history of Cimarron and the Santa Fe Trail and how each relates to their respective camps, all while honing their newfound interpretive roles, which will be their identity for the upcoming summer. “All the backcountry [staff] are learning about their backcountry camps,” he said to the sound of several thuds. The staffers learn “how to become one with their character” and “how to engage in the proper time period.”

The many staff were dressed in clothes harkening back to the 1800s, a century that abruptly returned to life when the backcountry staff scattered across the mountains and camps became filled.

“We don’t play like they come off a bus,” Blue said, describing how he liked to greet the participants by asking them about their carriages and mules, two modes of transportation popular in the 19th century.

Training focused on how staff can adopt their new personalities and immerse participants in 19th century Western life. By practicing tomahawk throwing, blacksmithing and gardening, backcountry staff better embrace their characters. As a result, participants are better engrossed within the history and lore of the camp they visit, giving them

a richer experience at Philmont.

“We want to provoke thought,” said David O’Neill, Associate Director of Program at Philmont. He wants participants at these interpretive backcountry camps to stop and reflect on how much of a struggle it was settling the West 200 years ago.

Additionally, the chance to experience firsthand how some of these settlers lived so spartan an existence provides an educational opportunity that is wanting in a textbook. Across each of the camps, participants will be able to pick up bits of the history of Cimarron and Philmont.

“They’re just not getting lectures, they’re seeing the people,” he continued. “It makes it real. It brings them alive. It’s just not someone in a book talking to them.”

O’Neill hopes the lessons will give participants a new perspective. For David Ayliff, a four-season staff member now Camp Director at Abreu, last Saturday’s training allowed him and his program counselors to practice being a family.

“We’ve been focused on learning our past,” Ayliff, 23, said. “I want us to be invested with the characters. If we have a feeling as a family, we will be able to perform better.”

As the backcountry staff cycle through each of the training sessions, and the dull thwaps turn into the sharp thuds of a tomahawk embedding itself into a tree trunk, Blue leans forward and bellows more advice to the throwers before giving a parting statement about what makes history at Philmont so accessible for participants:

“It’s not just to see it, but do it.”



David Ayliff, Program Counselor at Abreu, waters plant at Rayado during the Living History training on June 2. All other staff of interpretive camps participated in the training. MATTEO PROKOSCH/PHILNEWS PHOTOGRAPHER



Reid Shortidge, a program counselor at Clear Creek, and Christopher “Toph” Schaller, the camp director at Miranda, demonstrate tomahawk throwing during Living History training on Saturday, June 2 at Rayado. MATTEO PROKOSCH/PHILNEWS PHOTOGRAPHER



The crowd watches Director of Conservation Mike Serio at the bell-ringing ceremony before dinner on Tuesday, May 29. The next day, the Conservation Department left basecamp for backcountry training. CONNOR SPURR/PHILNEWS PHOTOGRAPHER



A participant takes a break during Living History Night on Saturday, June 2 at Baldy Pavilion. Backcountry and Base Camp staff played music and performed skits to rehearse for campfires after crews arrive. LYNN DECAPO/PHILNEWS PHOTOGRAPHER



A male red-shafted flicker perches in a tree on Wednesday, May 30 at base camp. LYNN DECAPO/PHILNEWS PHOTOGRAPHER



Evan Bowser, Elder Wilson and Nicholas Deacon grill steaks for the Ranger Rendezvous on Monday, June 4 at Badly Pavilion. Bowser, who calls himself "Banquet Bowser," considers himself a champion grill. RACHEL TAYLOR.PHILNEWS PHOTOGRAPHER