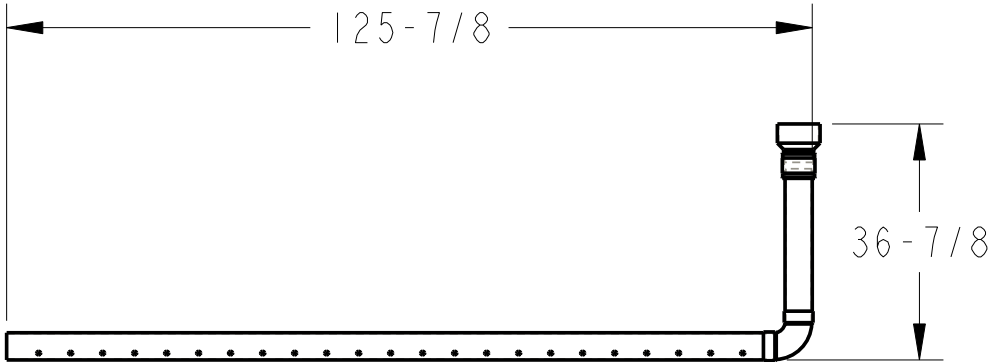
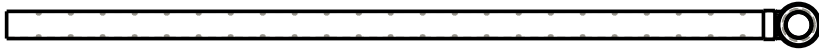
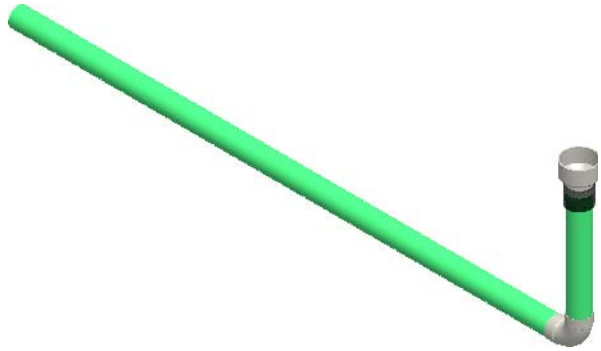

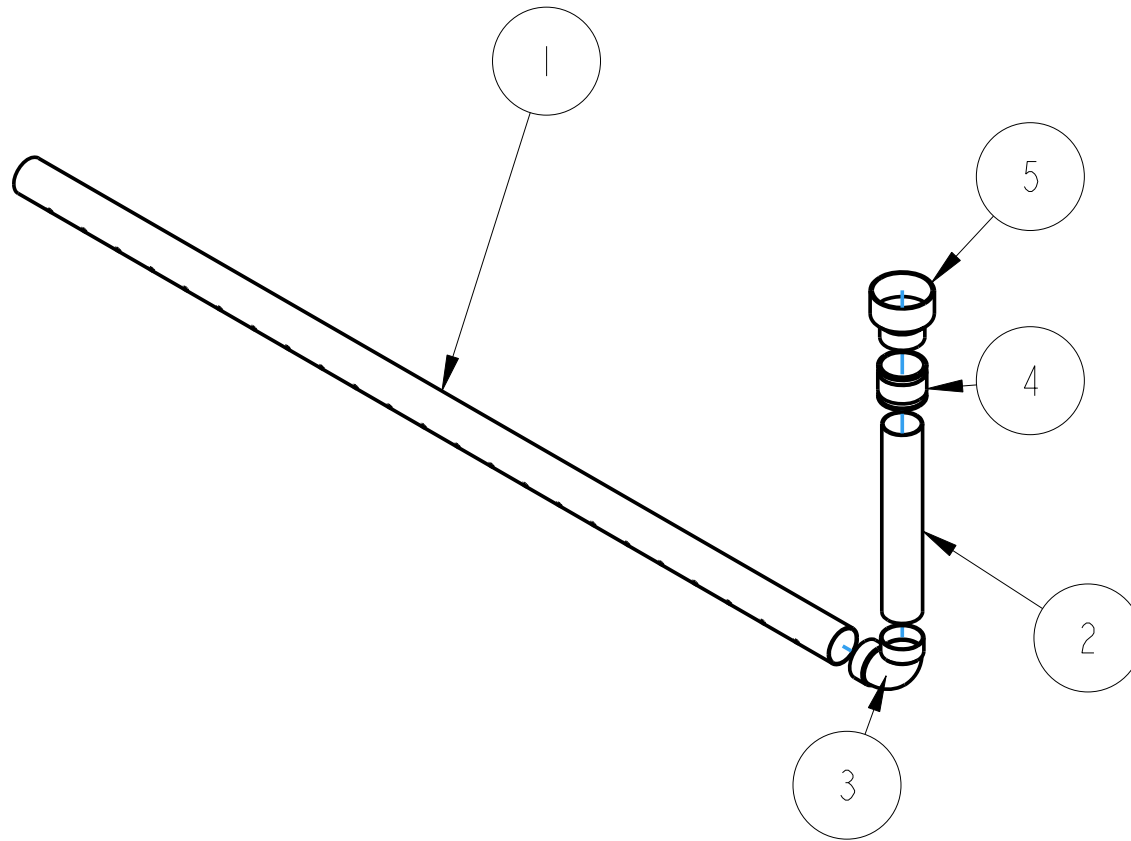

	Philmont Scout Ranch CONSERVATION SUMP	Title: SUMP	
		Tolerances: ± 0.25	
Drawn by: Ronald La Curan	N/A	Index: N/A	
Date: 10/21/08	Scale: 1:10	Version: 1	Page 1 of 10

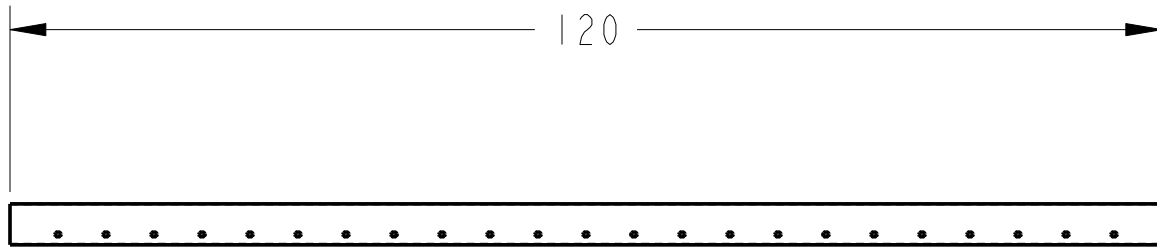
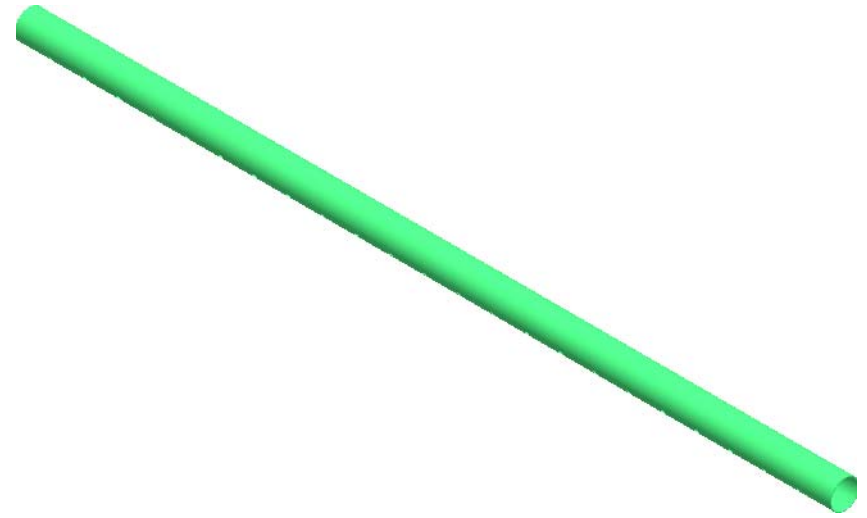



	Philmont Scout Ranch CONSERVATION SUMP		Title: SUMP	
			Tolerances: ± 0.25	
Drawn by: Ronald La Curan		Material	Index:	
Date: 10/21/08	Scale:	Version: 1	Page 2 of 10	

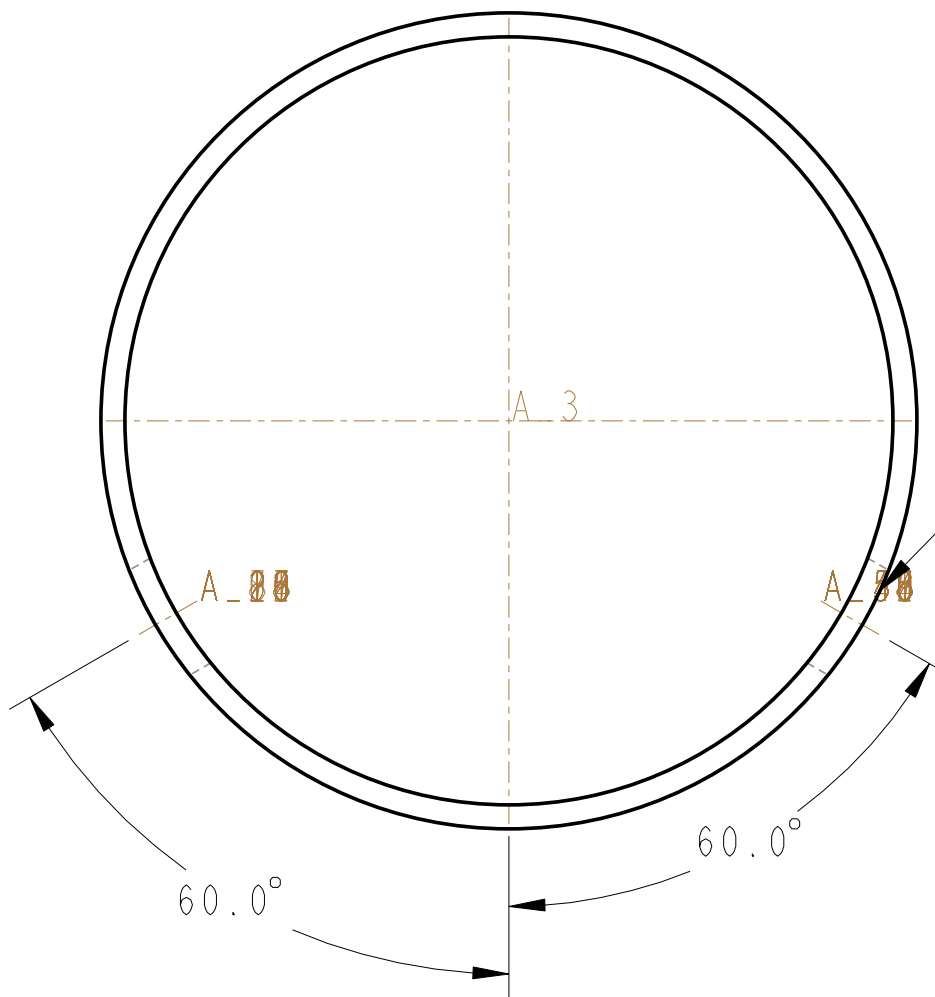
Index	Part Name	Description	Qty
1	PIPE_HORIZONTAL	4" Diameter PVC Sewer Pipe	1
2	PIPE_VERTICAL	4" Diameter PVC Sewer Pipe	1
3	ELBOW	4" PVC 1/4 Bend Ell Sewer	1
4	NECK	4"x4" Flexible Coupling	1
5	HEAD	6"x4" PVC Adapter	1




	Philmont Scout Ranch		Title: SUMP EXPLODE	
	CONSERVATION SUMP		Tolerances: ± 0.25	
Drawn by: Ronald La Curan		N/A	Index: N/A	
Date: 10/21/08	Scale: 1:20	Version: 1	Page 3 of 10	

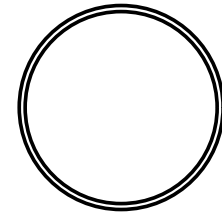
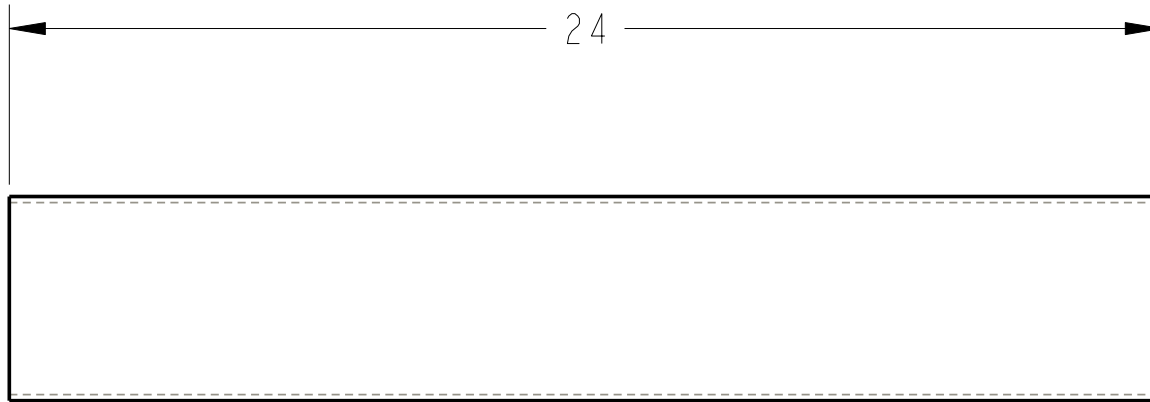
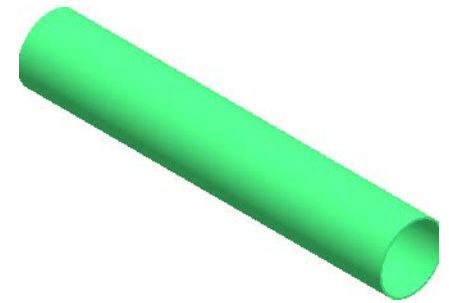



	Philmont Scout Ranch CONSERVATION SUMP		Title: PIPE_HORIZONTAL	
			Tolerances: ± 0.25	
Drawn by: Ronald La Curan		PVC Sewer Pipe	Index: 1	
Date: 10/21/08	Scale:	Version: 1	Page 4 of 10	

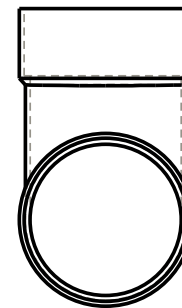
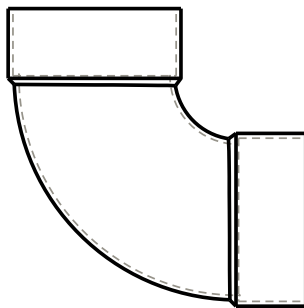
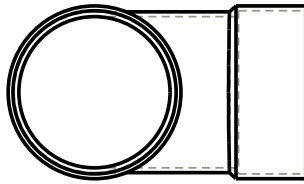



NOTE: Holes are 5/8" in diameter and are spaced 5" apart from center to center along the length of this pipe.

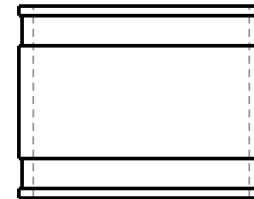
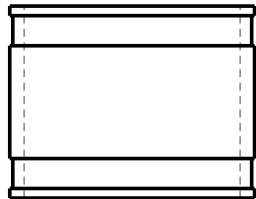
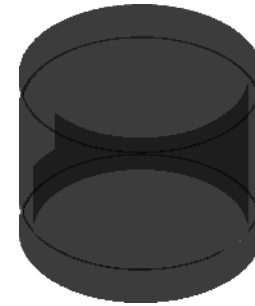
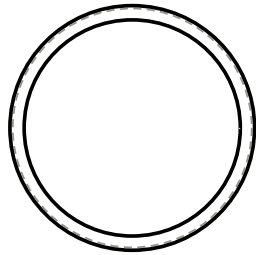
	Philmont Scout Ranch CONSERVATION SUMP		Title: PIPE_HORIZONTAL	
			Tolerances: ± 0.25	
Drawn by: Ronald La Curan		PVC Sewer Pipe	Index: 1	
Date: 10/21/08	Scale: 1:1	Version: 1	Page 5 of 10	




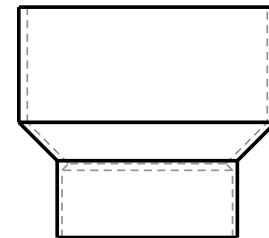
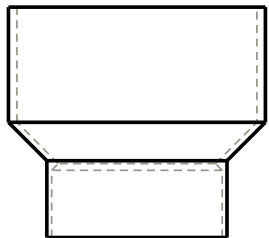
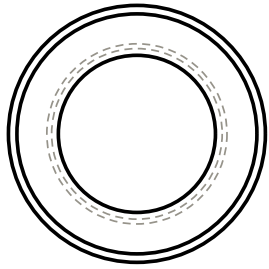
	Philmont Scout Ranch CONSERVATION SUMP		Title: PIPE_VERTICAL	
			Tolerances: ± 0.25	
Drawn by: Ronald La Curan		PVC Sewer Pipe	Index: 2	
Date: 10/21/08	Scale: 1:4	Version: 1	Page 6 of 10	




	Philmont Scout Ranch CONSERVATION SUMP	Title: ELBOW	
		Tolerances: ± 0.25	
Drawn by: Ronald La Curan	Thin Wall PVC	Index: 1	
Date: 10/21/08	Scale: 1:5	Version: 1	Page 7 of 10



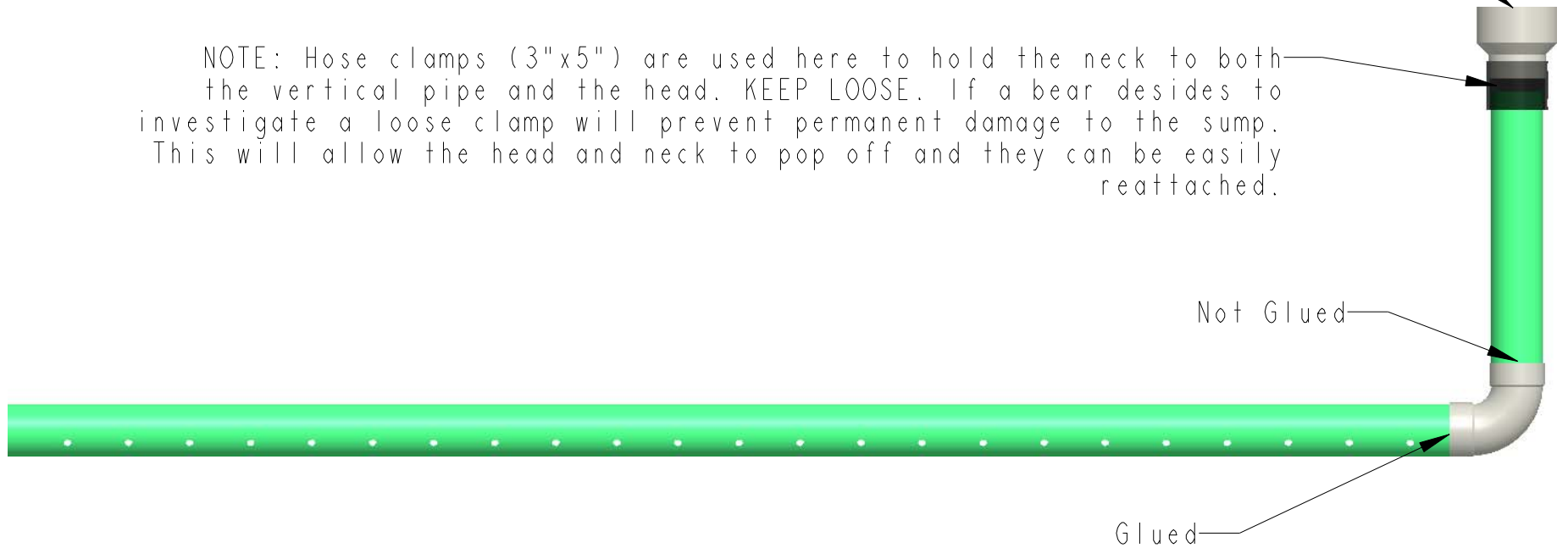
	Philmont Scout Ranch CONSERVATION SUMP		Title: NECK	
			Tolerances: ± 0.25	
Drawn by: Ronald La Curan		Elastometric PVC	Index: 4	
Date: 10/21/08	Scale: 1:4	Version: 1	Page 8 of 10	



	Philmont Scout Ranch CONSERVATION SUMP		Title: HEAD	
			Tolerances: ± 0.25	
Drawn by: Ronald La Curan		Thin Wall PVC	Index: 2	
Date: 10/21/08	Scale: 1:5	Version: 1	Page 9 of 10	


NOTE: Cut an 8"x8" square of screen out and place it over the top of the head of the Sump. Using a (5"x7") hose clamp, press the excess screen against the sides of the head and hold in place with the hose clamp.

NOTE: Hose clamps (3"x5") are used here to hold the neck to both the vertical pipe and the head. KEEP LOOSE. If a bear decides to investigate a loose clamp will prevent permanent damage to the sump. This will allow the head and neck to pop off and they can be easily reattached.



NOTE: pipe_vertical is not glued into the elbow because if for some reason a bear or participant damages that portion of the sump, the entire sump does not need to be dug out, only the vertical pipe would need to be excavated and then a new one could very easily be plugged right in in the broken one's place.

NOTE: When installing Sump, be sure the lower pipe, pipe_horizontal, is installed on a bed of gravel to assist in the percolation of the sump water to the surrounding soil

 Philmont Scout Ranch CONSERVATION SUMP	Title: ASSEMBLY AND INSTALL	
	Tolerances: ±0.25	
Drawn by: Ronald La Curan	N/A	Index: N/A
Date: 10/21/08	Scale: 3:40	Version: 1
		Page 10 of 10

Sump Parts List and Cost Estimate

The following list is provided as an estimate of the required lumber to build Sump:

Index	Part Name	Description	Company	Part #	Price (in \$)
1	pipe_horizontal	4" Diameter Sewer Pipe	US Plastics	31003	11.9
2	pipe_vertical	4" Diameter Sewer Pipe	US Plastics	31003	2.38
3	elbow	4" PVC 1/4 Bend Ell Sewer Pipe	US Plastics	31110	3.31
4	neck	4"x4" Flexible Coupling	US Plastics	30552	6.81
5	head	6"x4" PVC Adapter	US Plastics	31056	11.23
6	Hose Clamp	5"x7" Clamp	US Plastics	24332	4.09
7	Hose Clamps	2 - 3"x5" Clamps	US Plastics	24331	6.80
				TOTAL	46.52

*Segments should be glued together using a PVC glue.

The price listed above reflects current market values for United States Plastic Corp. and is given only as an estimate. Prices will vary both by location and random market fluctuations. Pricing was provided by catalog from US Plastics. Contact information for this company is as follows:

United States Plastic Corp.
 1390 Newbrecht Road
 Lima, OH 45801
 Phone: 800-537-9724
 Fax: 800-854-5498
www.usplastic.com

Date: October 21, 2008